

# LFX NEON SERIES 17 SPEC SHEET



LFX-N-17 -RGB-24V



YYZ LFX Neon series is designed to provide a very bright, crisp consistent and homogenized illumination that will accentuate any building, structure, or artistic flourish. Using high brightness surface mounted LEDs, behind a first-class eco-friendly UV-resistant Silicone polymer encapsulated flexible chamber material, the LFX Neon will provide your project with bright, consistent traces of light in shades of White, single colors. The fixture consists of uniform and even lighting with no Led hotspot. LFX Neon has a transverse minimum radius of 75mm and is horizontal bendable. Easy to install, can be cut and reconnected with IP68 protected connector. The product is supplied in 5m standard rolls or custom as needed.



## SPECIFICATION

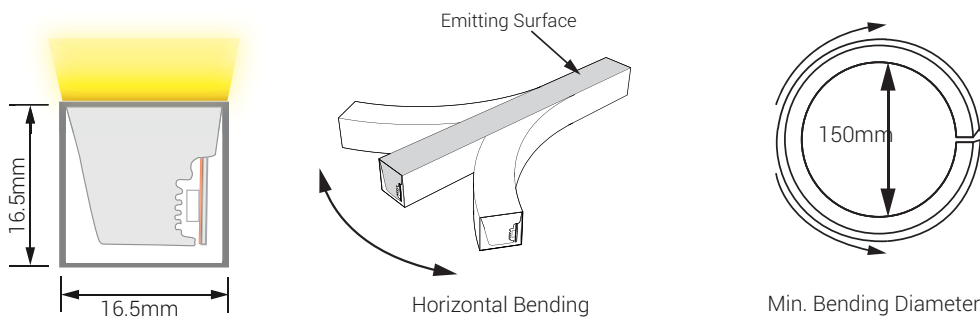
OPERATING VOLTAGE	24V DC
POWER	13W / m
LED COUNT	72LEDs/m
CUTTING UNIT	6 LEDs
CUTTING LENGTH	83.3mm
MIN. BEND DIA.	150mm
LED SOURCE	SMD LED 5050
CCT	RGB
MAX. RUN LENGTH	32.80ft / 10 m(Single Feed), 65.61 ft / 20 m (Double Feed)
BEAM ANGLE	120°
LAMP LIFE	70,000 hours L70@25°C, 50,000 hours L70@50°C
MATERIAL	Silicone
OPERATING TEMP	-40°C to +55°C
IP RATING	IP68
IK RATING	IK08
WARRANTY	5 years

-  **SMD LED 5050**  
LED Quality
-  **24V DC**  
Working Voltage
-  **13W/m**  
Rated power

## DELIVERED LUMENS BY CCT

Color	lm / m
Red	50lm/m
Green	144lm/m
Blue	21lm/m
RGB(White)	195lm/m

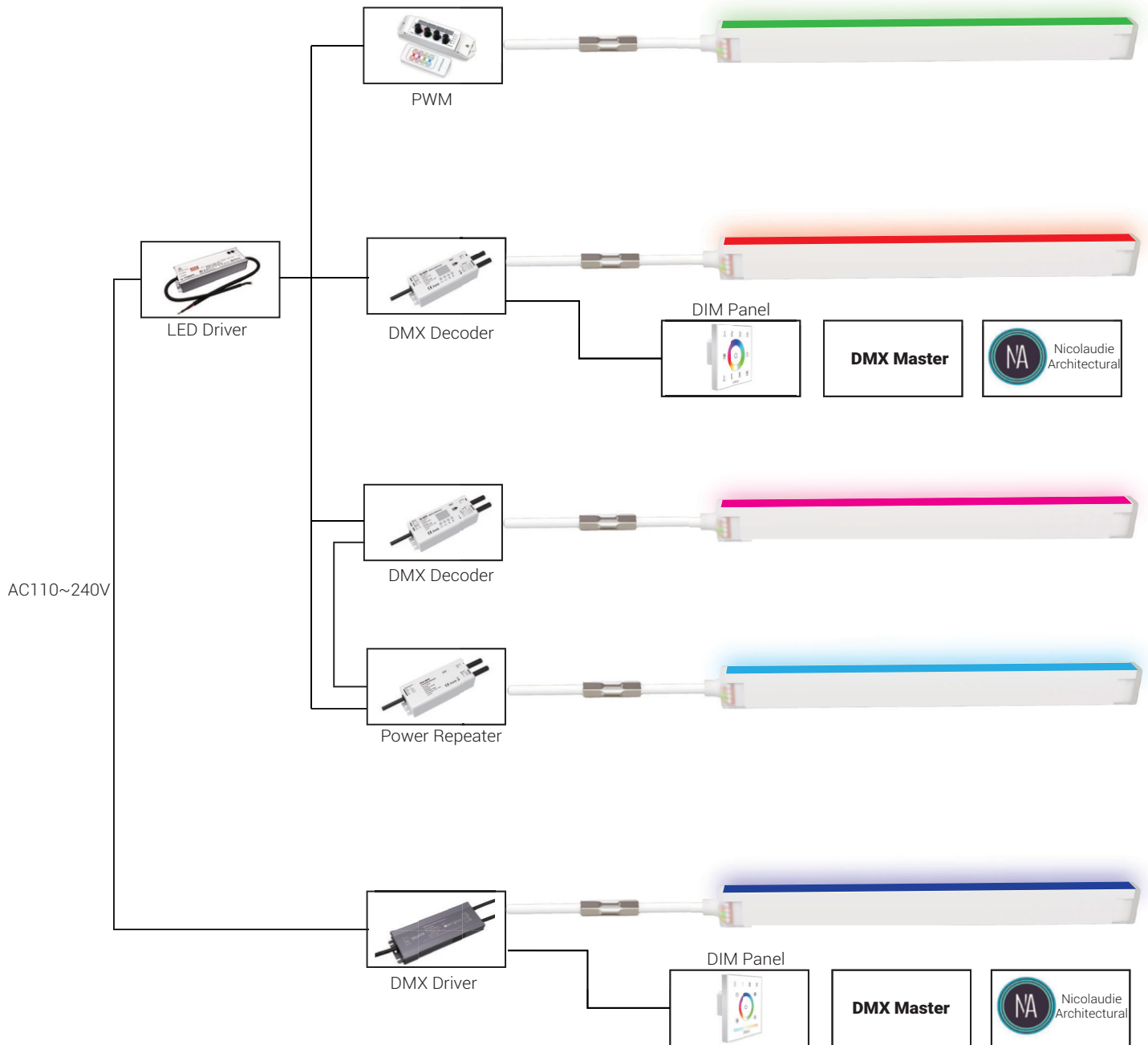
## DIMENSION



# LFX NEON SERIES 17 SPEC SHEET

LFX-N-17 -RGB-24V

## CONNECTION DIAGRAM



# LFX NEON SERIES 17 SPEC SHEET



LFX-N-17 -RGB-24V

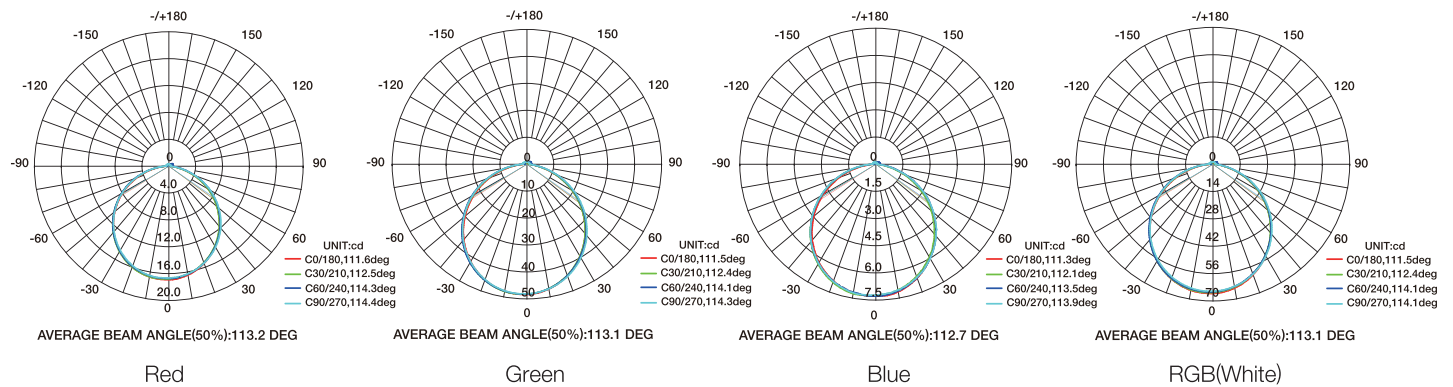
## ORDERING CODE

PRODUCT	TYPE	MODEL	BENDING	POWER	VOLTAGE	COLOR	CONTROL
LFX	N - Neon	17 - 17	HB - Horizontal Bending	13 - 13W	DC - 24V DC	RGB - RGB	SW - Switch DALI - DALI DMX - DMX DIM - 0/1-10V TRI - TRIAC

Sample: LFX-N-17-HB-13-DC-RGB-SW

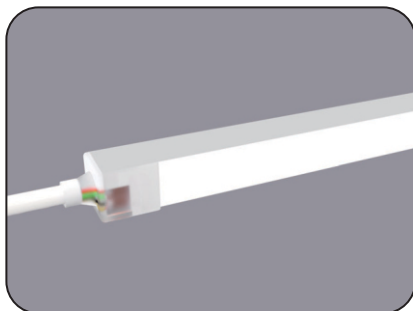
## PHOTOMETRIC DATA

### Illuminance Distribution

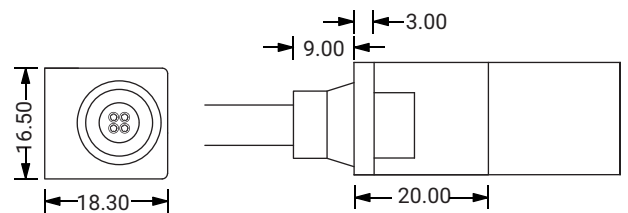


## ACCESSORIES

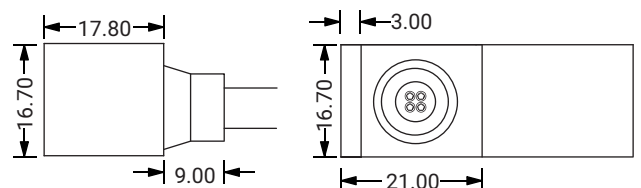
MOLD INJECTION CONNECTOR (IP68 Factory Assembly Only)



Direct Entry Connector  
 MJ-LFX17-RGB-D01/02/03  
 MJ-LFX17-RGB-D01SM  
 MJ-LFX17-RGB-D02SF  
 MJ-LFX17-RGB-D03SFM



Side Entry Connector  
 MJ-LFX17-RGB-S01/02/03  
 MJ-LFX17-RGB-S01SM  
 MJ-LFX17-RGB-S02SF  
 MJ-LFX17-RGB-S03SFM

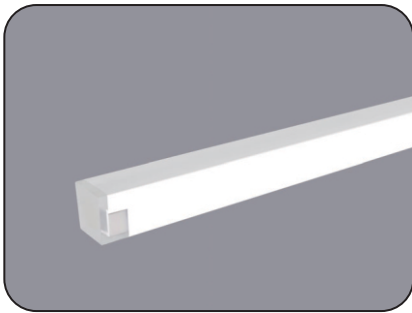
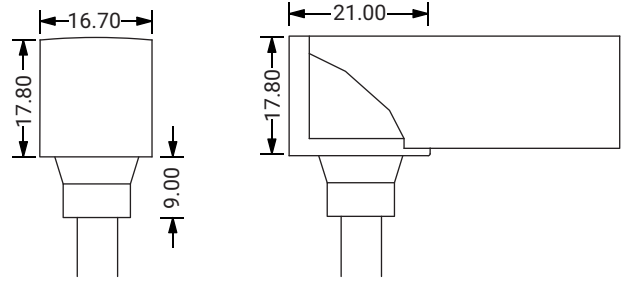


# LFX NEON SERIES 17 SPEC SHEET

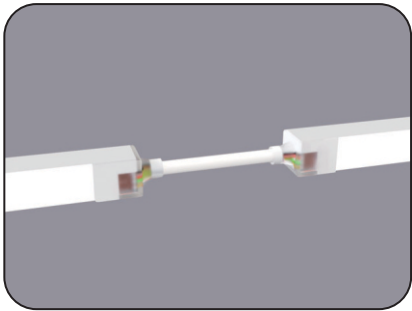
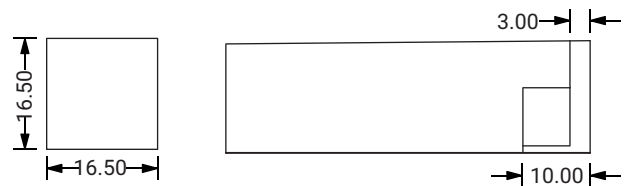
LFX-N-17 -RGB-24V



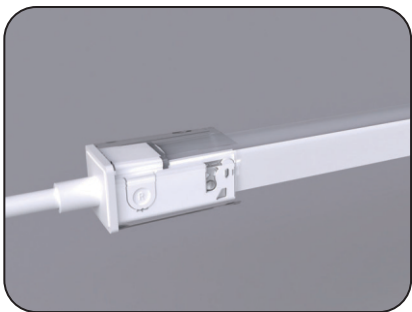
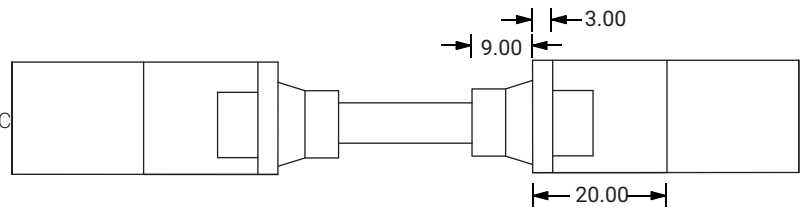
Bottom Entry Connector  
MJ-LFX17-RGB-B01/02/03  
MJ-LFX17-RGB-B01SM  
MJ-LFX17-RGB-B02SF  
MJ-LFX17-RGB-B03SFM



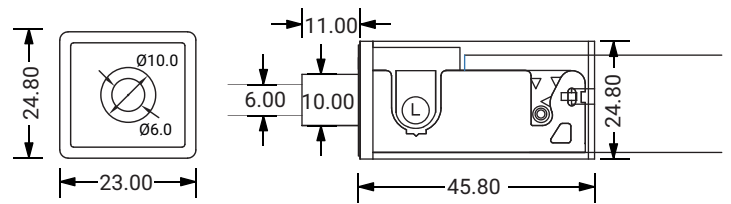
End Cap



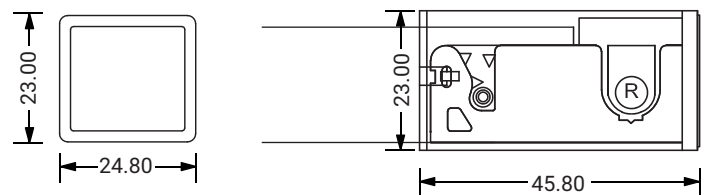
Jumper  
MJ-LFX17-RGB-D-JC



DIY Snap Connector  
DIY-SN-FR-17-D-01/02-RGB

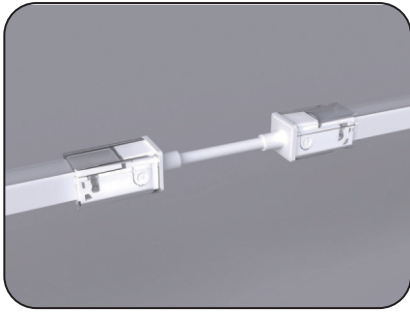


DIY Snap End Cap  
DIY-SN-END-17-D-01/02

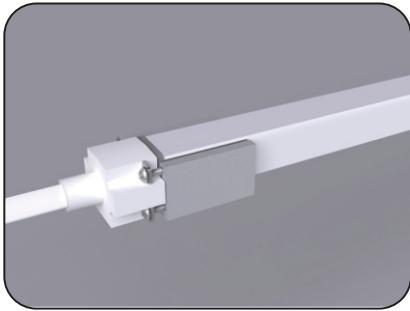
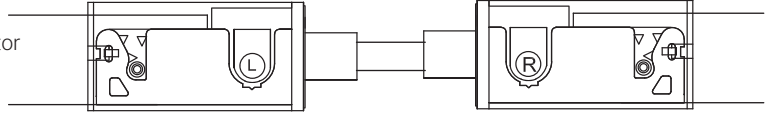


# LFX NEON SERIES 17 SPEC SHEET

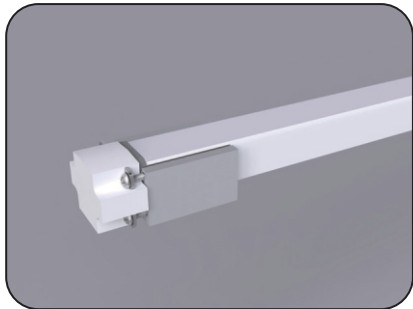
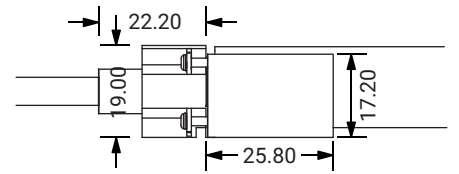
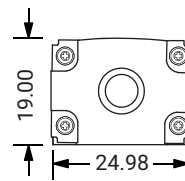
LFX-N-17 -RGB-24V



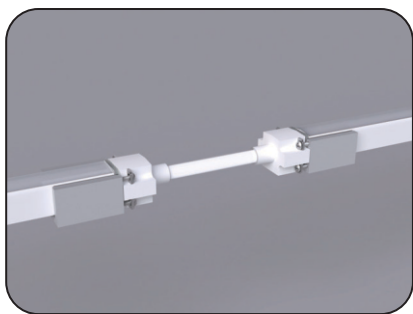
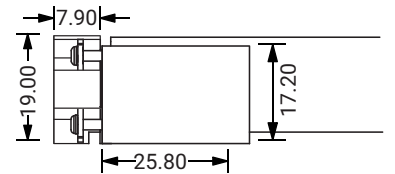
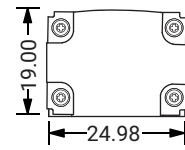
DIY Snap Extent Connector  
DIY-SN-EXT-17-RGB



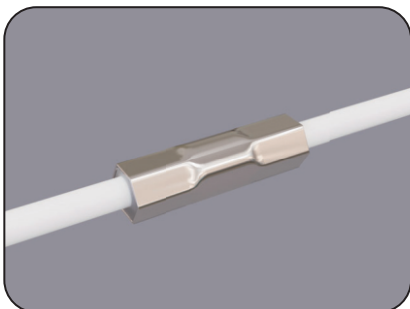
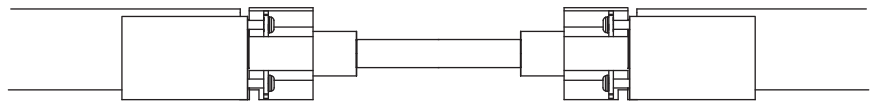
DIY Screw Connector  
DIY-SC-FR-17-D-01/02-RGB



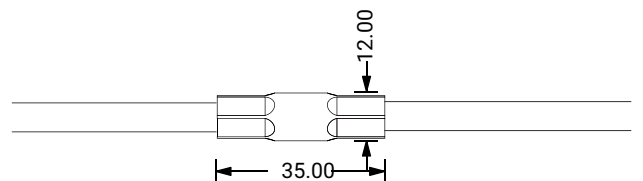
DIY Screw End Cap  
DIY-SC-END-16



DIY Screw Extent Connector  
DIY-SC-EXT-16-RGB

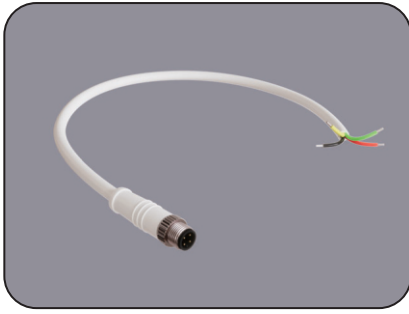


Waterproof Interrupter

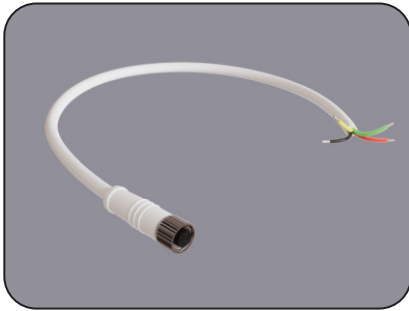
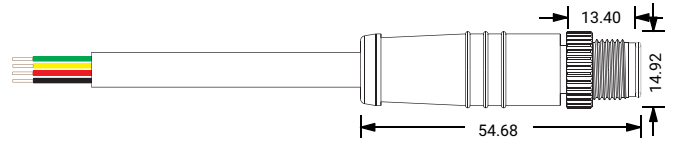


# LFX NEON SERIES 17 SPEC SHEET

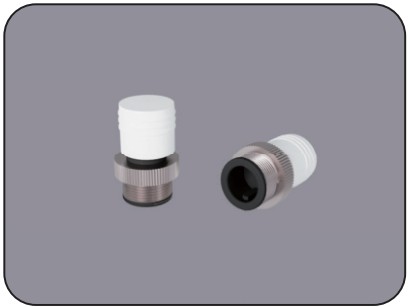
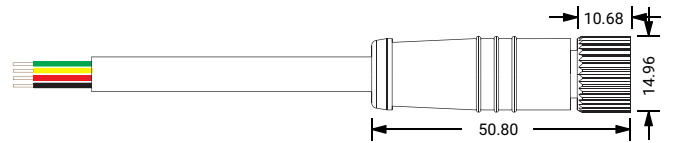
LFX-N-17 -RGB-24V



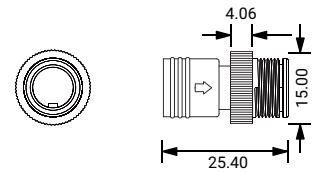
Male Connector  
M12-M-4C-20AWG-D6-W-0327-S



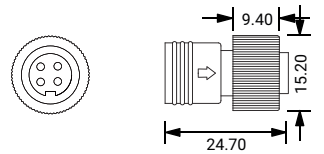
Female Connector  
M12-F-4C-20AWG-D6-W-0327-S



Male Connector End Cap  
SYZ-EC-M12-M



Female Connector End Cap  
SYZ-EC-M12-F-2C

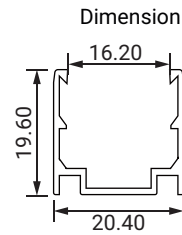
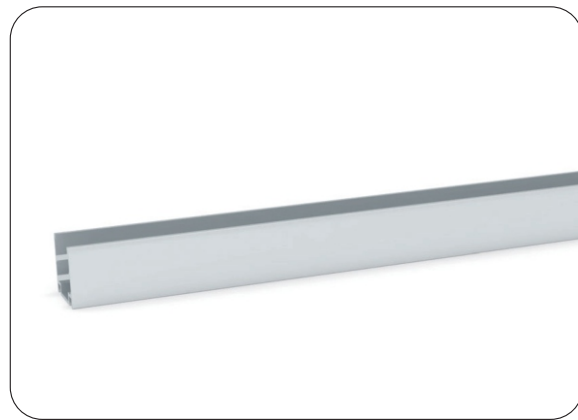


# LFX NEON SERIES 17 SPEC SHEET

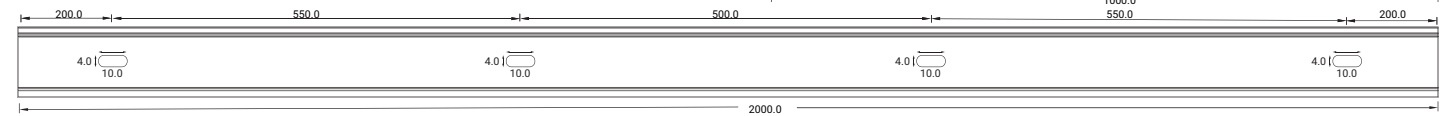
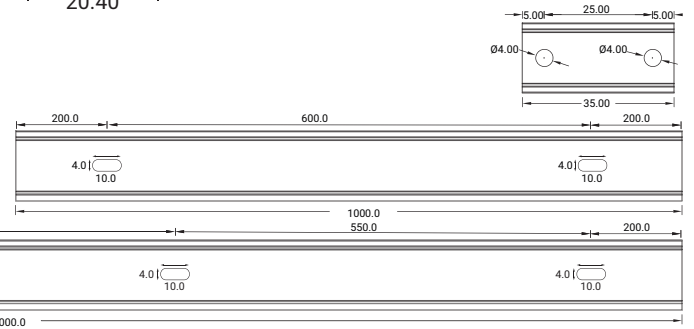
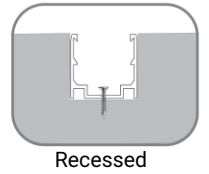
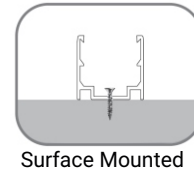
LFX-N-17 -RGB-24V



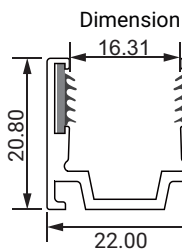
## ALUMINUM CHANNEL



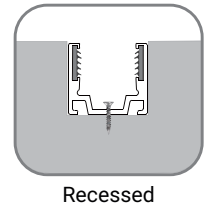
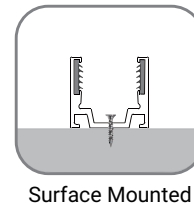
**Installation Way**



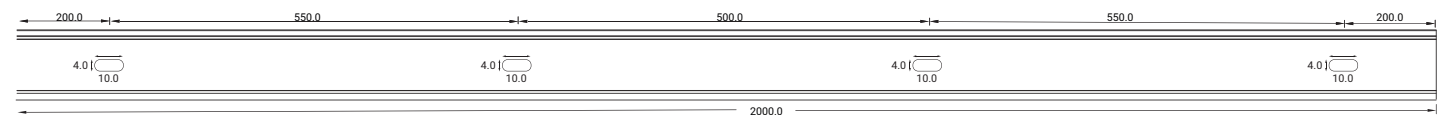
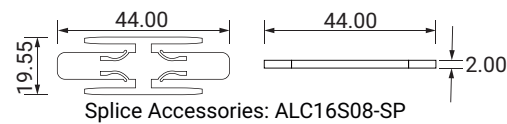
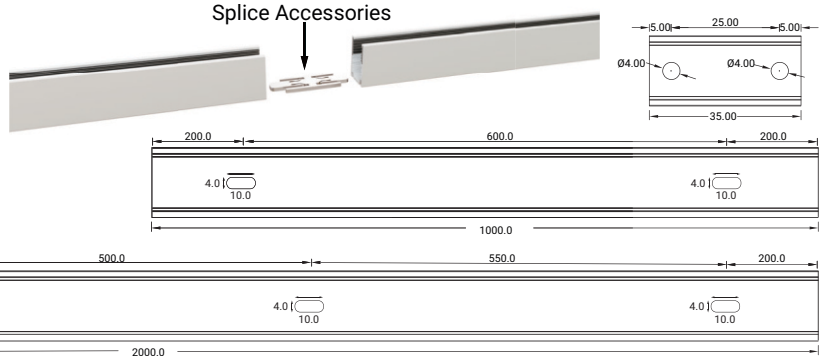
Model	W x H (mm)	Standard Length	Screw Holes	Holes Numbers
ALC16S02-035	20.40 x 19.60	35mm	Ø4.00mm	2
ALC16S02-100		1000mm	4.00mm	2
ALC16S02-200		2000mm	4.00mm	4



**Installation Way**



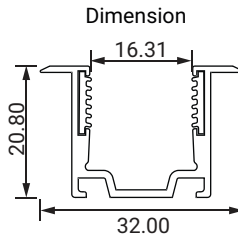
**Splice Accessories**



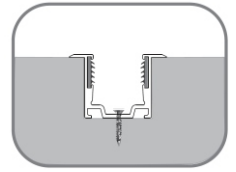
Model	W x H (mm)	Standard Length	Screw Holes	Holes Numbers
ALC16S08-035	22.00 x 20.80	35mm	Ø4.00mm	2
ALC16S08-100		1000mm	4.00mm	2
ALC16S08-200		2000mm	4.00mm	4

# LFX NEON SERIES 17 SPEC SHEET

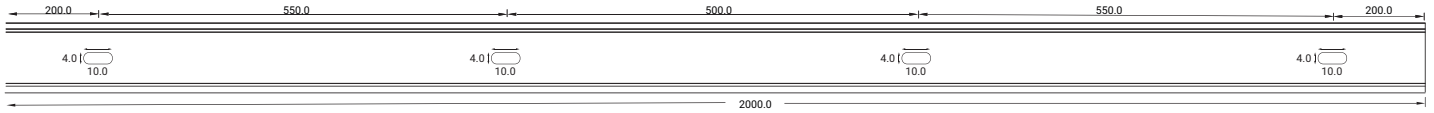
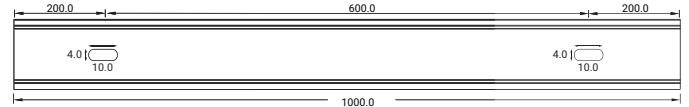
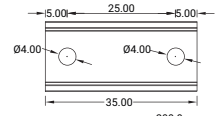
LFX-N-17 -RGB-24V



**Installation Way**



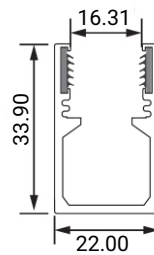
**Recessed**



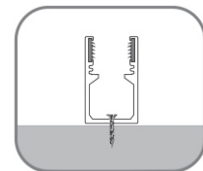
Model	W x H (mm)	Standard Length	Screw Holes	Holes Numbers
ALC16S07-035	32.00 x 20.80	35mm	Ø4.00mm	2
ALC16S07-100		1000mm	4.00mm	2
ALC16S07-200		2000mm	4.00mm	4



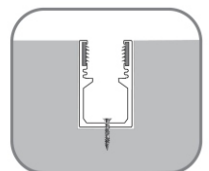
**Dimension**



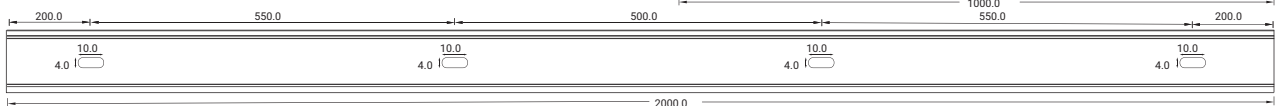
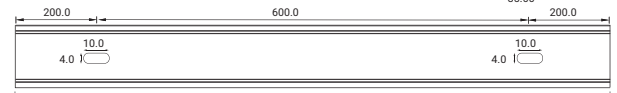
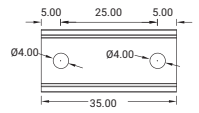
**Installation Way**



**Surface Mounted**



**Recessed**



Model	W x H (mm)	Standard Length	Screw Holes	Holes Numbers
ALC16H02-035	22.00 x 33.90	35mm	Ø4.00mm	2
ALC16H02-100		1000mm	4.00mm	2
ALC16H02-200		2000mm	4.00mm	4

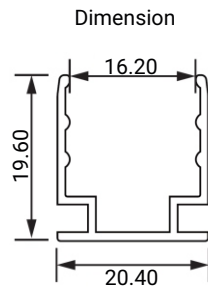
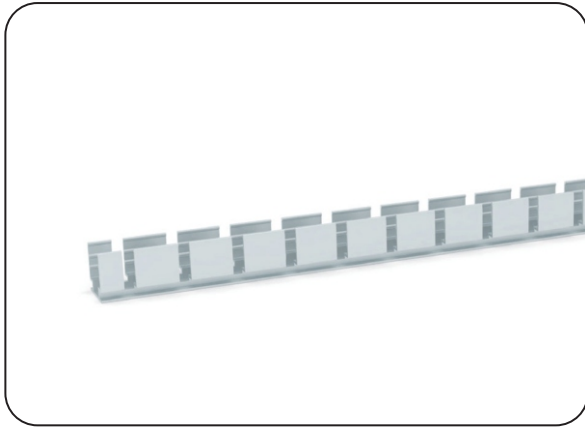


# LFX NEON SERIES 17 SPEC SHEET

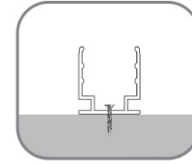
LFX-N-17 -RGB-24V



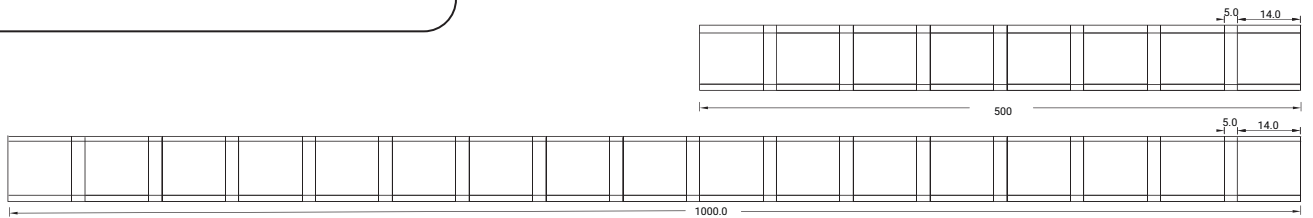
## FLEXIBLE ALUMINUM CHANNEL



**Installation Way**

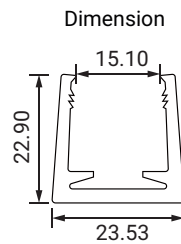


Surface Mounted

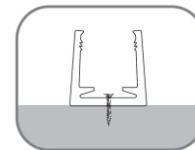


Model	W x H (mm)	Standard Length
ALC17S02FLX05	20.40 x 19.60	500mm
ALC17S02FLX10		1000mm

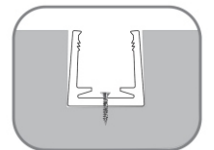
## PLASTIC CHANNEL



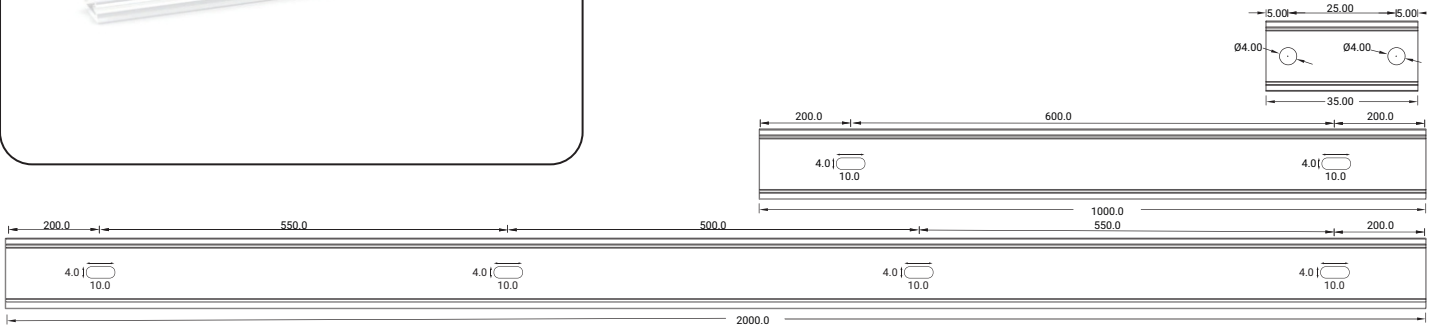
**Installation Way**



Surface Mounted



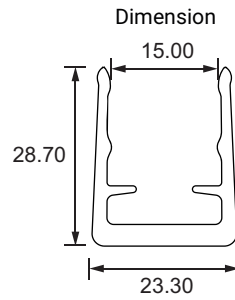
Recessed



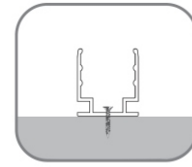
Model	W x H (mm)	Standard Length	Screw Holes	Holes Numbers
PC16/17S02-T-100	23.53 x 22.90	1000mm	Ø4.0mm	2

# LFX NEON SERIES 17 SPEC SHEET

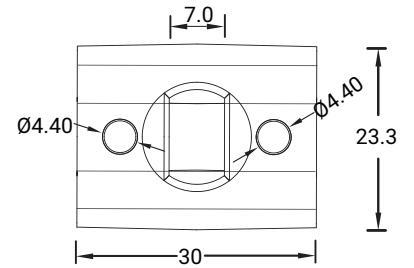
LFX-N-17 -RGB-24V



Installation Way

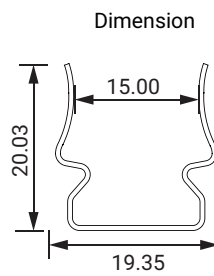
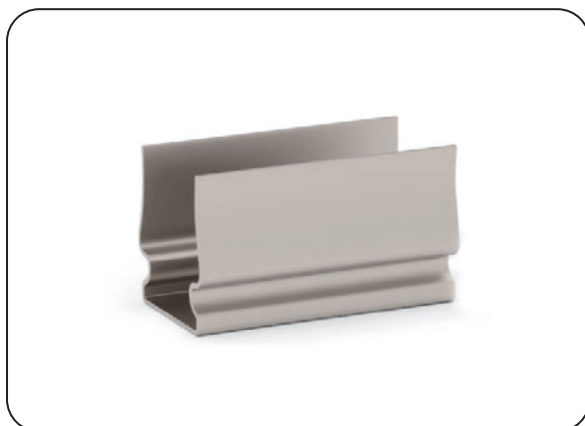


Surface Mounted

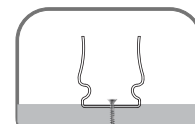


Model	W x H (mm)	Standard Length	Screw Holes	Holes Numbers
SJJ-ZSH-008-PC	23.30 x 28.70	30mm	Ø4.40mm	2

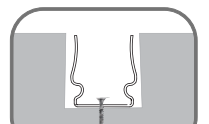
## STAINLESS STEEL CHANNEL



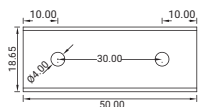
Installation Way



Surface Mounted



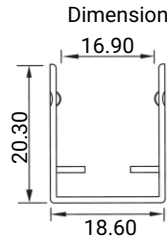
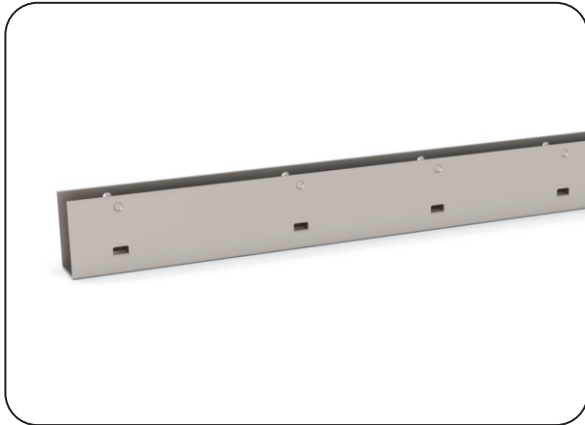
Recessed



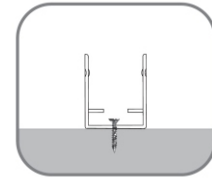
Model	W x H (mm)	Standard Length	Screw Holes	Holes Numbers
SSC16S01-05	19.35 x 20.03	50mm	Ø4.0mm	2

# LFX NEON SERIES 17 SPEC SHEET

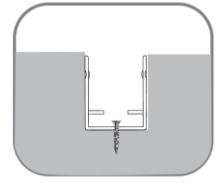
LFX-N-17 -RGB-24V



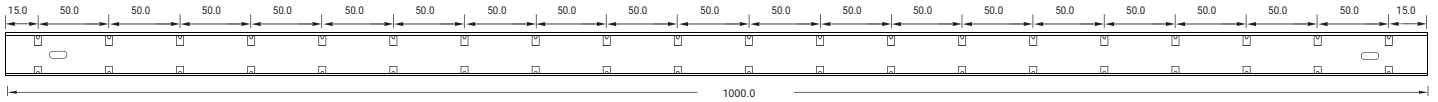
Installation Way



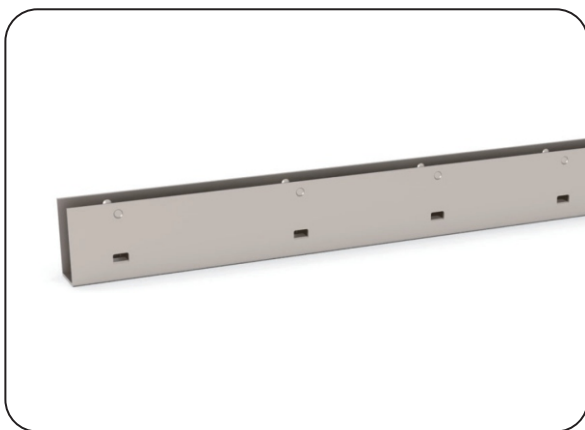
Surface Mounted



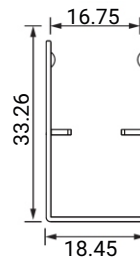
Recessed



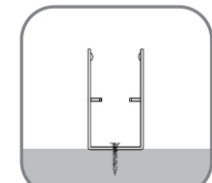
Model	W x H (mm)	Standard Length	Screw Holes	Holes Numbers
SSC16S02-100	18.60 x 20.30	1000mm	4.0 x 10mm	2



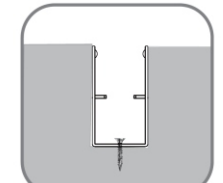
Dimension



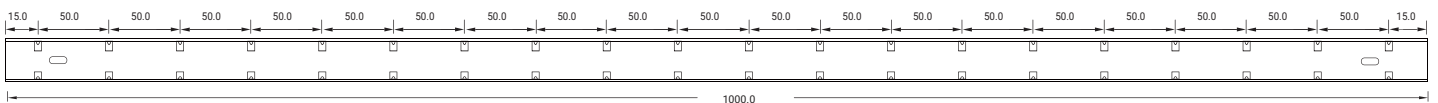
Installation Way



Surface Mounted



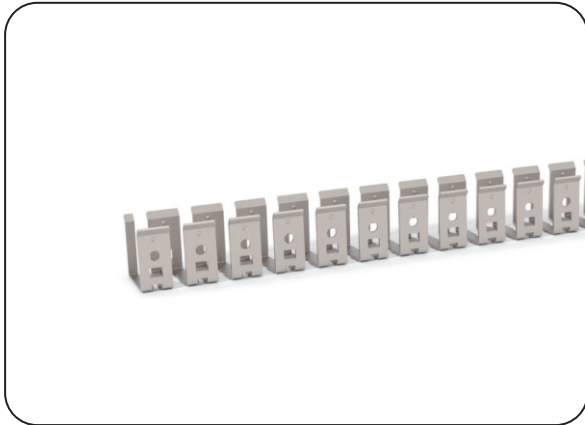
Recessed



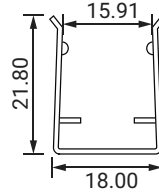
Model	W x H (mm)	Standard Length	Screw Holes	Holes Numbers
SSC16H01-100	18.45 x 33.26	1000mm	4.0 x 10mm	2

# LFX NEON SERIES 17 SPEC SHEET

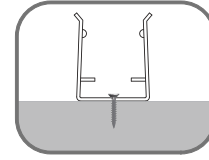
LFX-N-17 -RGB-24V



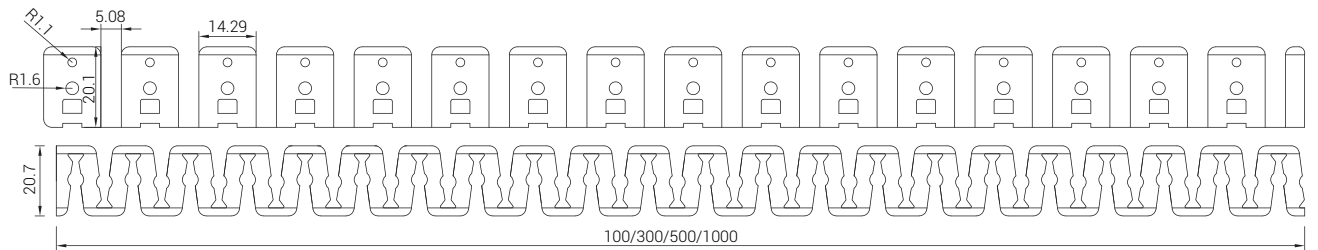
Dimension



Installation Way



Surface Mounted



Model	W x H (mm)	Standard Length
SSC16FLX01	18.00 x 21.80	100mm
SSC16FLX03		300mm
SSC16FLX05		500mm
SSC16FLX10		1000mm