

# LFX NEON SERIES 16 SPEC SHEET



LFX-N-16 -RGBW- 24V






YYZ LFX Neon series is designed to provide a very bright, crisp consistent and homogenized illumination that will accentuate any building, structure, or artistic flourish. Using high brightness surface mounted LEDs, behind a first-class eco-friendly UV-resistant Silicone polymer encapsulated flexible chamber material, the LFX Neon will provide your project with bright, consistent traces of light in shades of White, single colors. The fixture consists of uniform and even lighting with no Led hotspot. LFX Neon has a transverse minimum radius of 60mm and is horizontal bendable. Easy to install, can be cut and reconnected with IP68 protected connector. The product is supplied in 5m standard rolls or custom as needed.



## SPECIFICATION

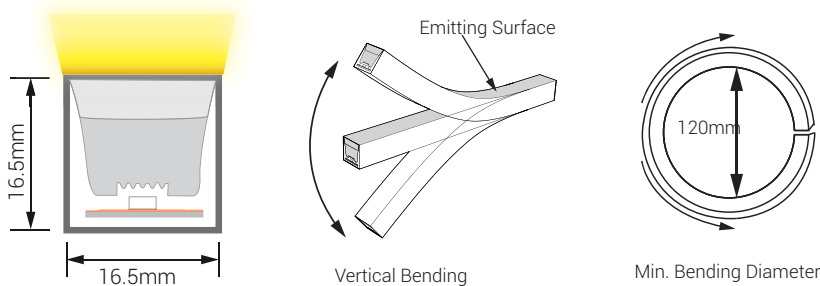
OPERATING VOLTAGE	24V DC
POWER	17W / m
LED COUNT	72LEDs/m
CUTTING UNIT	6 LEDs
CUTTING LENGTH	83.3 mm
MIN. BEND DIA.	120mm
LED SOURCE	SMD LED 5050
CCT	RGBW(2700K, 3000K, 4000K, 5000K)
BINNING	One Bin
MAX. RUN LENGTH	26.251ft / 8 m(Single Feed), 52.49 ft / 16 m (Double Feed)
BEAM ANGLE	120°
LAMP LIFE	70, 000 hoursL70@25°C, 50, 000 hours L70@50°C
MATERIAL	Silicone
OPERATING TEMP	-40°C to +55°C
IP RATING	IP68
IK RATING	IK08
WARRANTY	5 years

-  **SMD LED 5050**  
LED Quality
-  **24V DC**  
Working Voltage
-  **17W/m**  
Rated power

## DELIVERED LUMENS BY CCT

Color	lm / m
Red	13lm/m
Green	150lm/m
Blue	34lm/m
RGB(White)	480lm/m
3000K	250lm/m

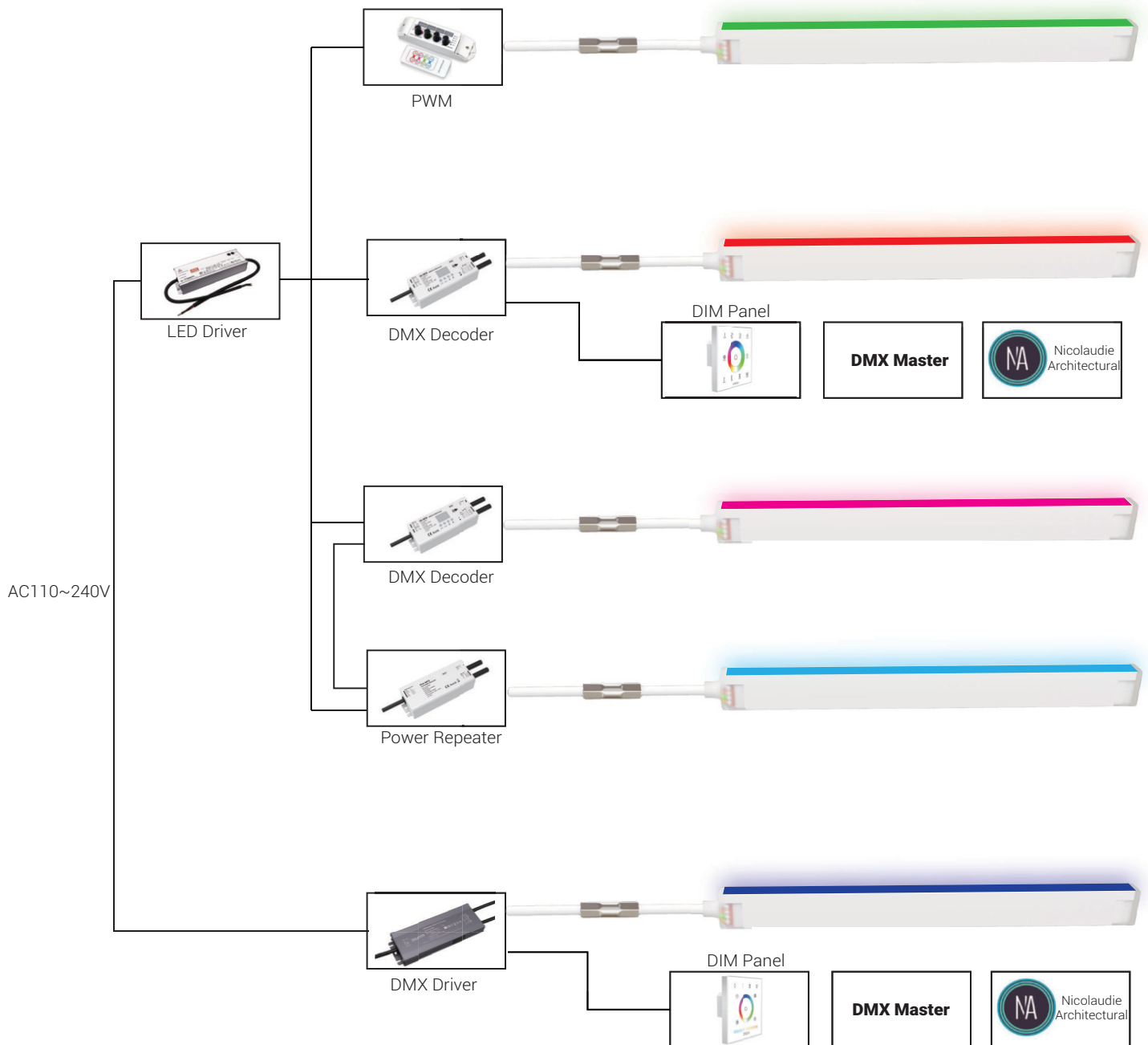
## DIMENSION



# LFX NEON SERIES 16 SPEC SHEET

LFX-N-16 -RGBW- 24V

## CONNECTION DIAGRAM



# LFX NEON SERIES 16 SPEC SHEET



LFX-N-16 -RGBW- 24V

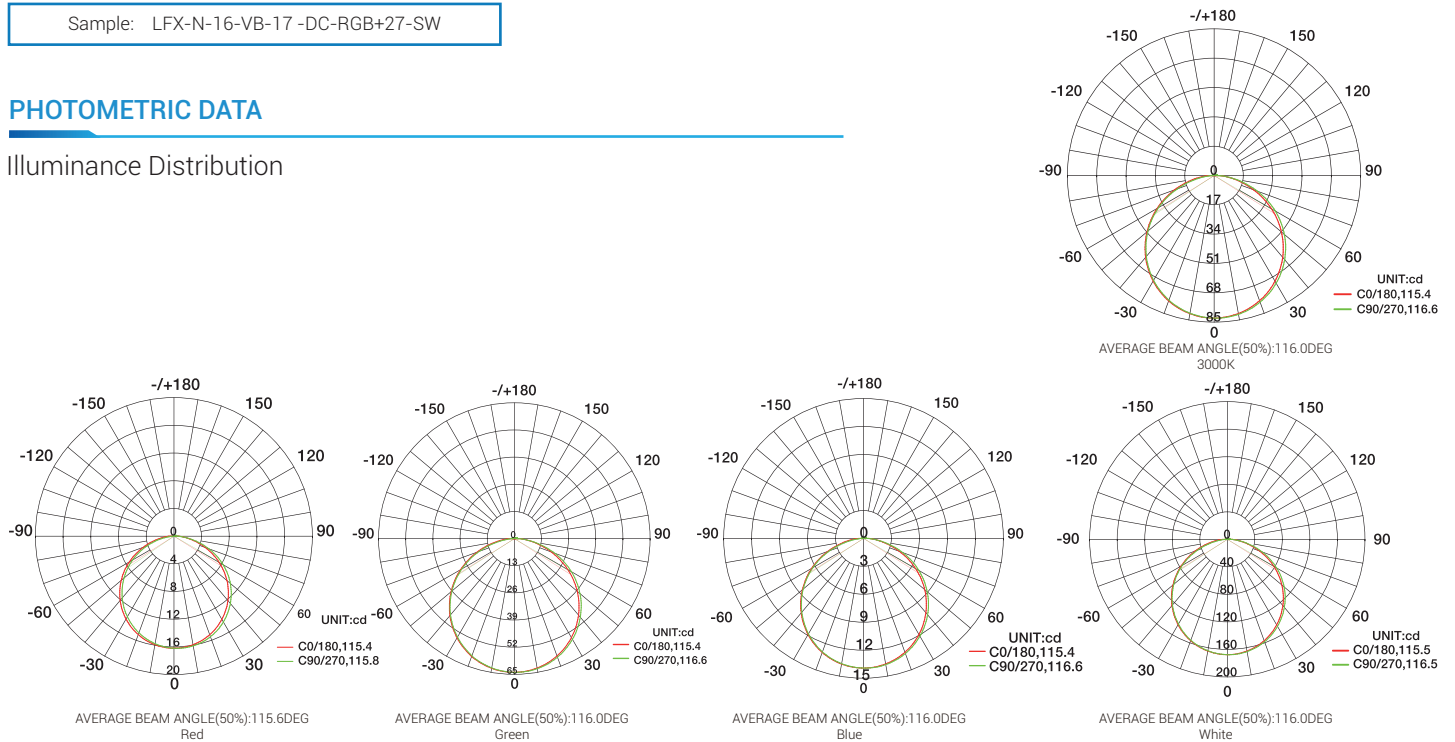
## ORDERING CODE

PRODUCT	TYPE	MODEL	BENDING	POWER	VOLTAGE	COLOR	CONTROL
LFX	N - Neon	16 - 16	VB - Vertical Bending	17 - 17W	DC - 24V DC	RGB+27 - RGBW(2700K) RGB+30 - RGBW(3000K) RGB+40 - RGBW(4000K) RGB+50 - RGBW(5000K)	SW - Switch DALI - DALI DMX - DMX DIM - 0/1-10V TRI - TRIAC

Sample: LFX-N-16-VB-17 -DC-RGB+27-SW

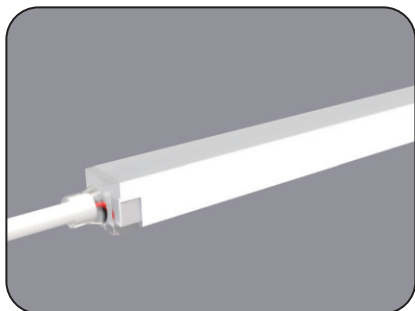
## PHOTOMETRIC DATA

Illuminance Distribution

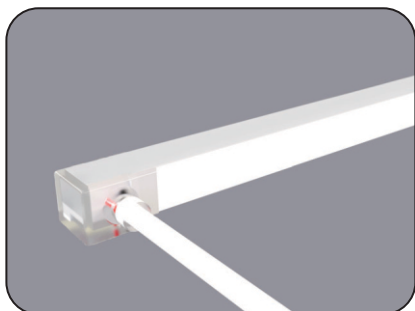
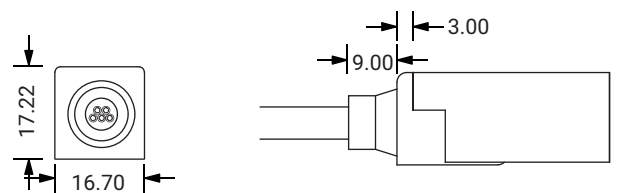


## ACCESSORIES

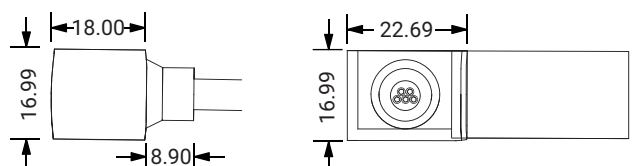
MOLD INJECTION CONNECTOR (IP68 Factory Assembly Only)



Direct Entry Connector  
 MJ-LFX16-RGBW-D01/02/03  
 MJ-LFX16-RGBW-D01SM  
 MJ-LFX16-RGBW-D02SF  
 MJ-LFX16-RGBW-D03SFM



Side Entry Connector  
 MJ-LFX16-RGBW-S01/02/03  
 MJ-LFX16-RGBW-S01SM  
 MJ-LFX16-RGBW-S02SF  
 MJ-LFX16-RGBW-S03SFM

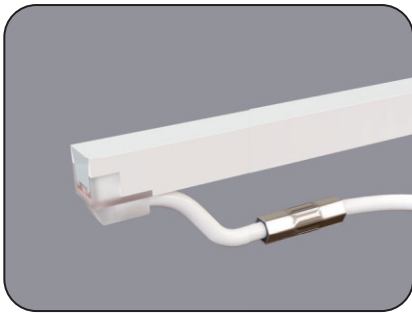
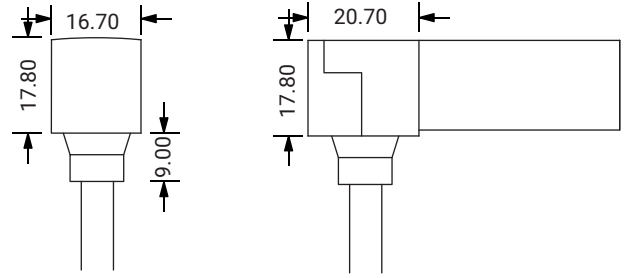


# LFX NEON SERIES 16 SPEC SHEET

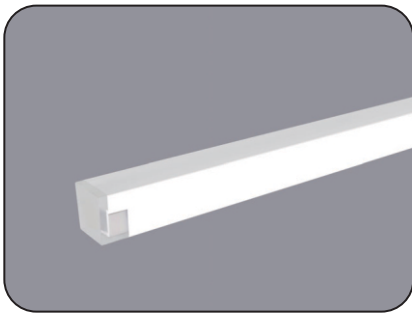
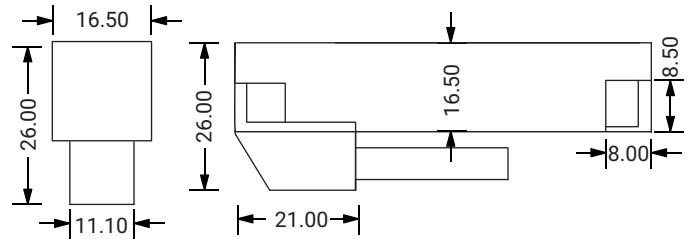
LFX-N-16 -RGBW- 24V



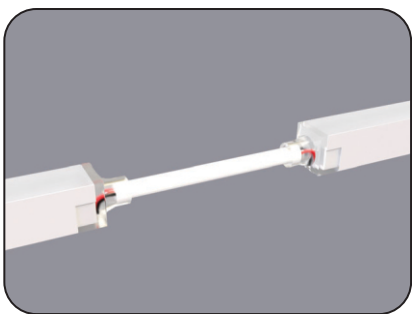
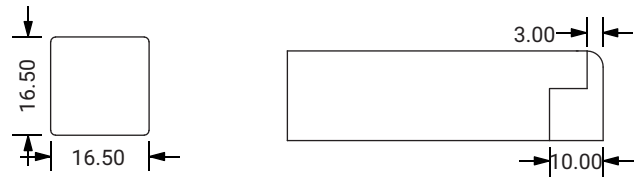
Bottom Entry Connector  
MJ-LFX16-RGBW-B01/02/03  
MJ-LFX16-RGBW-B01SM  
MJ-LFX16-RGBW-B02SF  
MJ-LFX16-RGBW-B03SFM



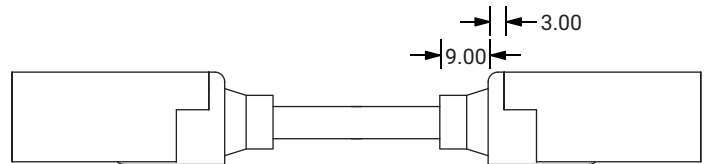
L Shape Entry Connector  
MJ-LFX16-RGBW-L01/02/03  
MJ-LFX16-RGBW-L01SM  
MJ-LFX16-RGBW-L02SF  
MJ-LFX16-RGBW-L03SFM



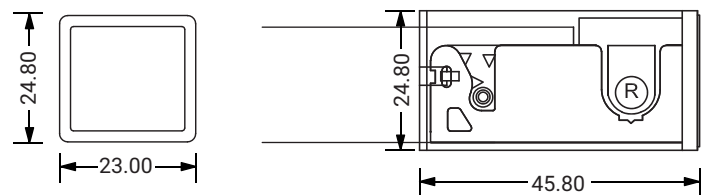
End Cap



Jumper  
MJ-LFX16-RGBW-D-JC

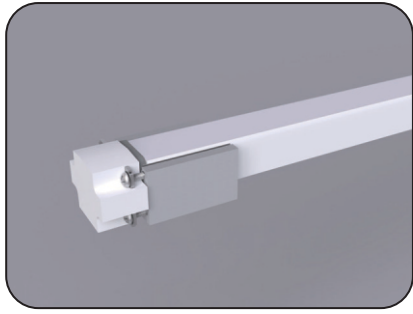


DIY Snap End Cap

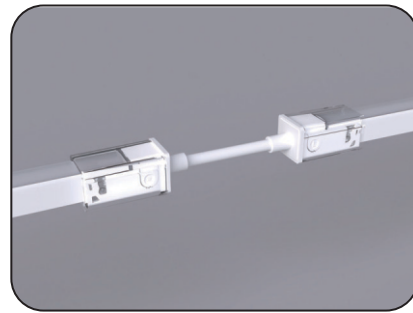
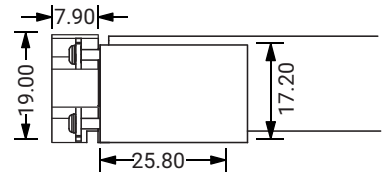
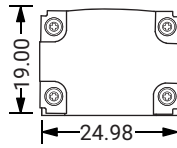


# LFX NEON SERIES 16 SPEC SHEET

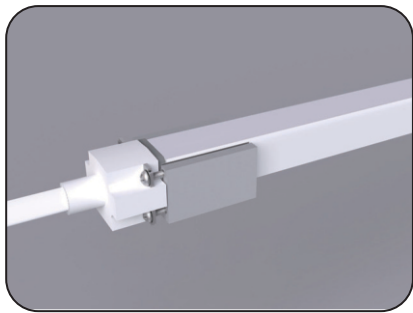
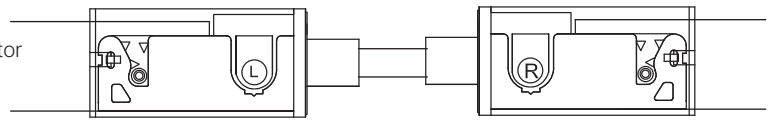
LFX-N-16 -RGBW- 24V



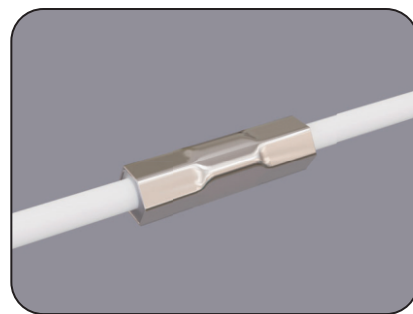
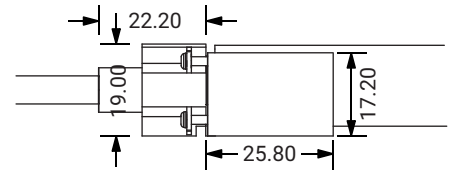
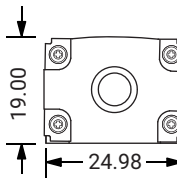
DIY Screw End Cap  
DIY-SC-END-16



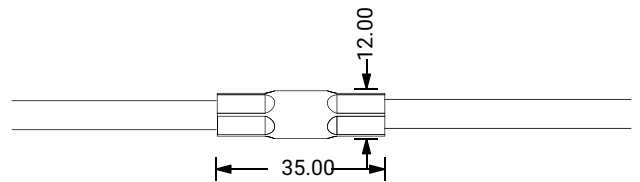
DIY Snap Extend Connector  
DIY-SN-EXT-16-A



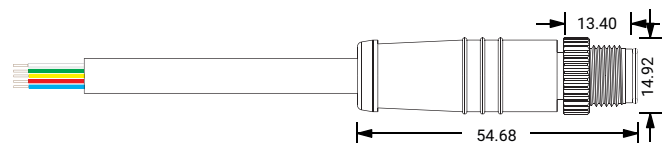
DIY Screw Connector  
DIY-SC-FR-16-D-01/02-A



Waterproof Interrupter

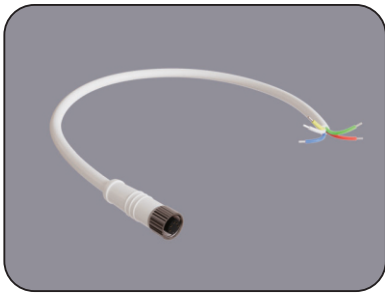


Male Connector  
M12-M-5C-20AWG-D6-W-0327-S

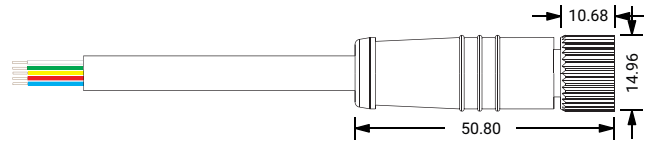


# LFX NEON SERIES 16 SPEC SHEET

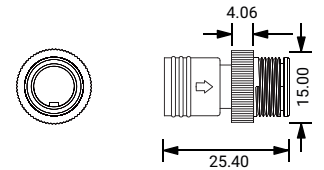
LFX-N-16 -RGBW- 24V



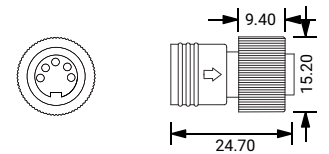
Female Connector  
M12-F-5C-20AWG-D6-W-0327-S



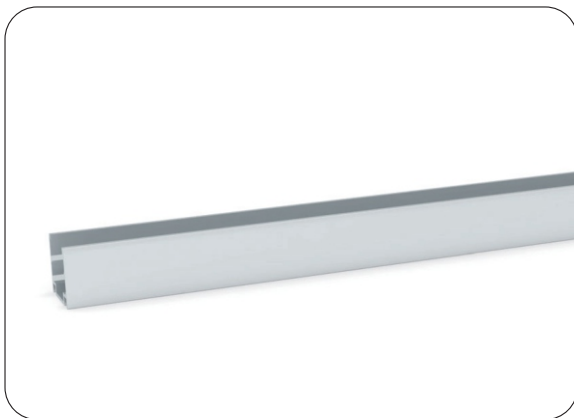
Male Connector End Cap  
SYZ-EC-M12-M



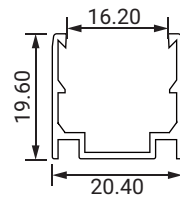
Female Connector End Cap  
SYZ-EC-M12-F-5C



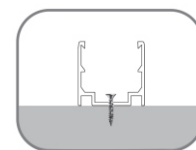
## ALUMINUM CHANNEL



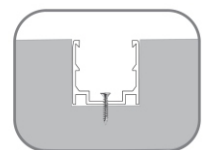
Dimension



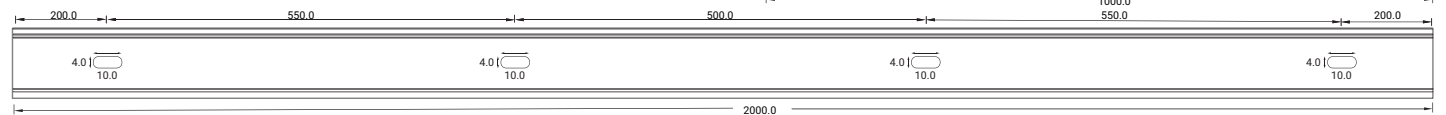
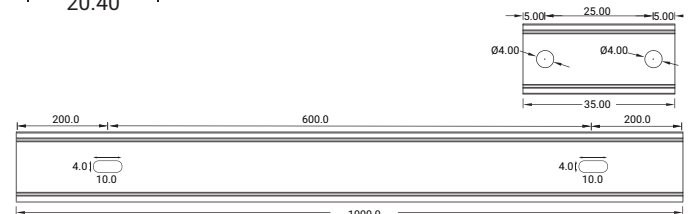
Installation Way



Surface Mounted



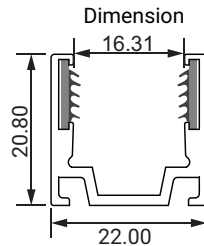
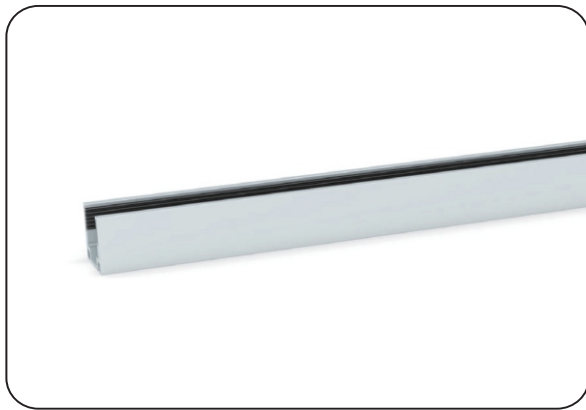
Recessed



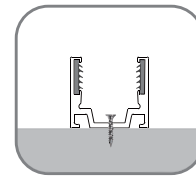
Model	W x H (mm)	Standard Length	Screw Holes	Holes Numbers
ALC16S02-035	20.40 x 19.60	35mm	Ø4.00mm	2
ALC16S02-100		1000mm	4.00mm	2
ALC16S02-200		2000mm	4.00mm	4

# LFX NEON SERIES 16 SPEC SHEET

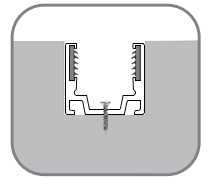
LFX-N-16 -RGBW- 24V



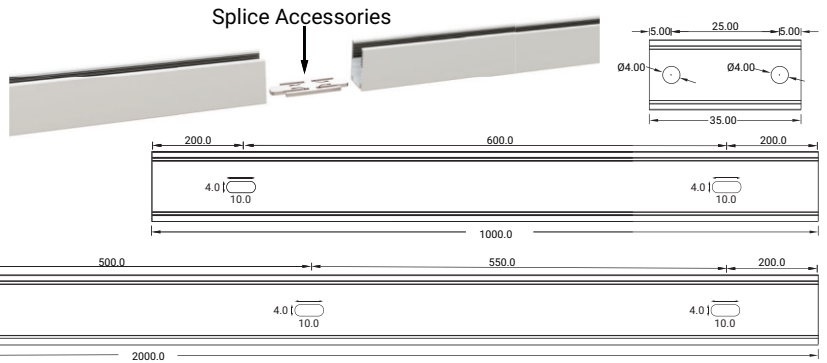
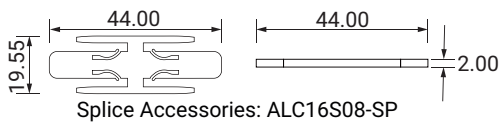
**Installation Way**



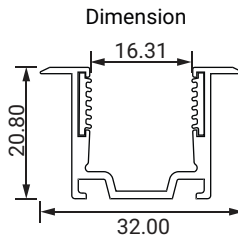
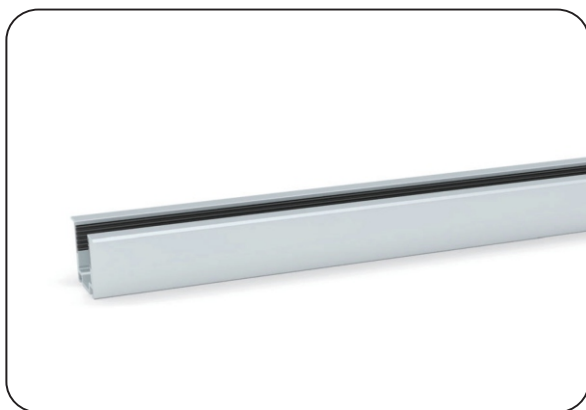
Surface Mounted



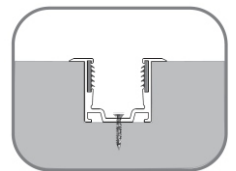
Recessed



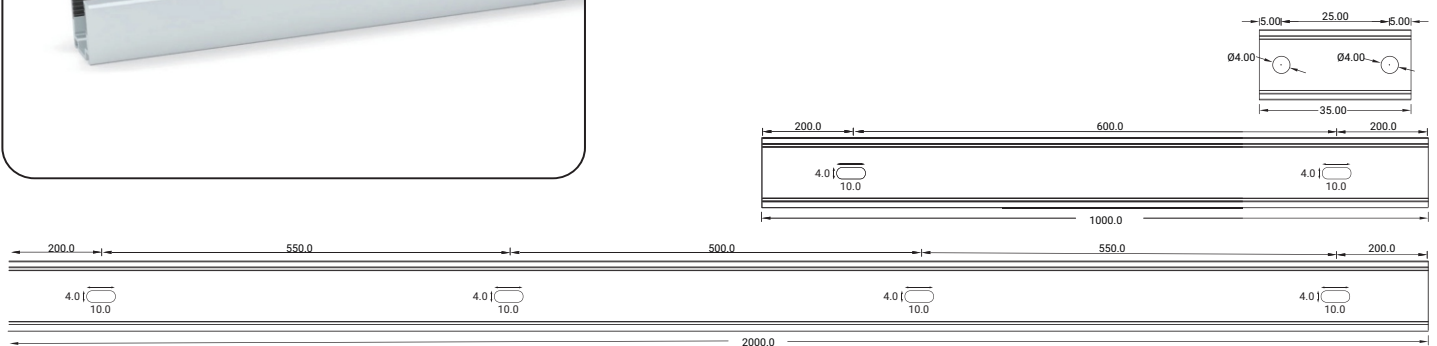
Model	W x H (mm)	Standard Length	Screw Holes	Holes Numbers
ALC16S08-035	22.00 x 20.80	35mm	Ø4.00mm	2
ALC16S08-100		1000mm	4.00mm	2
ALC16S08-200		2000mm	4.00mm	4



**Installation Way**



Recessed



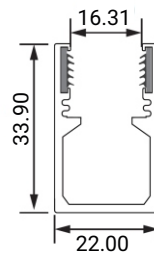
Model	W x H (mm)	Standard Length	Screw Holes	Holes Numbers
ALC16S07-035	32.00 x 20.80	35mm	Ø4.00mm	2
ALC16S07-100		1000mm	4.00mm	2
ALC16S07-200		2000mm	4.00mm	4

# LFX NEON SERIES 16 SPEC SHEET

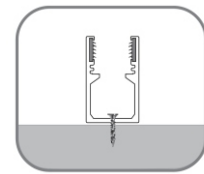
LFX-N-16 -RGBW- 24V



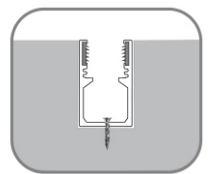
Dimension



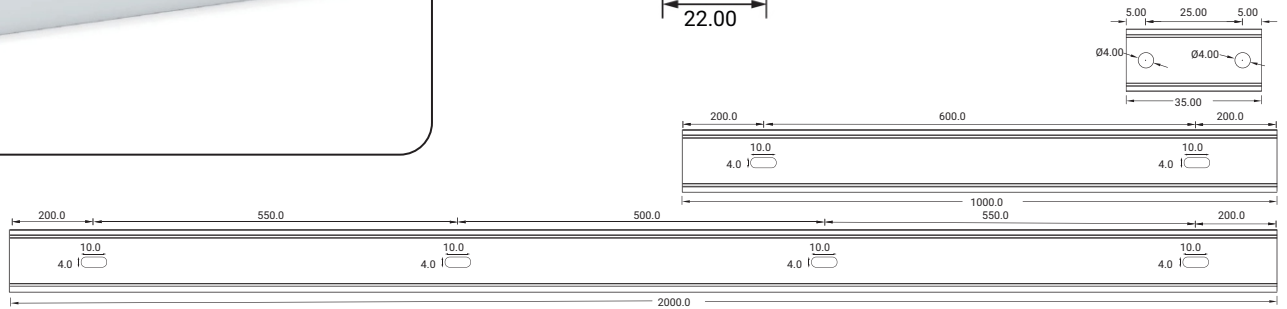
Installation Way



Surface Mounted

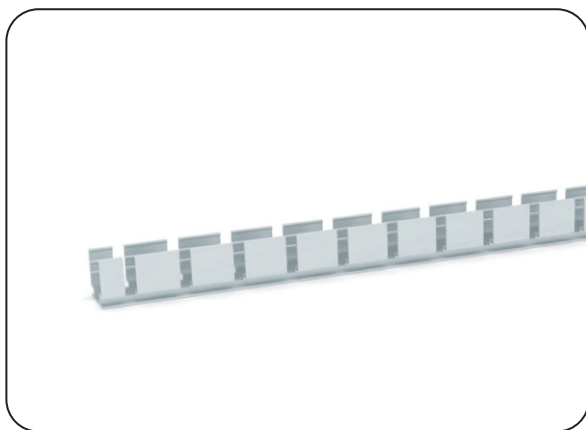


Recessed

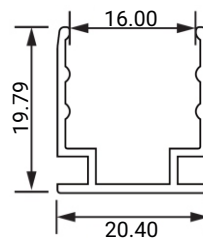


Model	W x H (mm)	Standard Length	Screw Holes	Holes Numbers
ALC16H02-035	22.00 x 33.90	35mm	Ø4.00mm	2
ALC16H02-100		1000mm	4.00mm	2
ALC16H02-200		2000mm	4.00mm	4

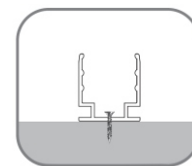
## FLEXIBLE ALUMINUM CHANNEL



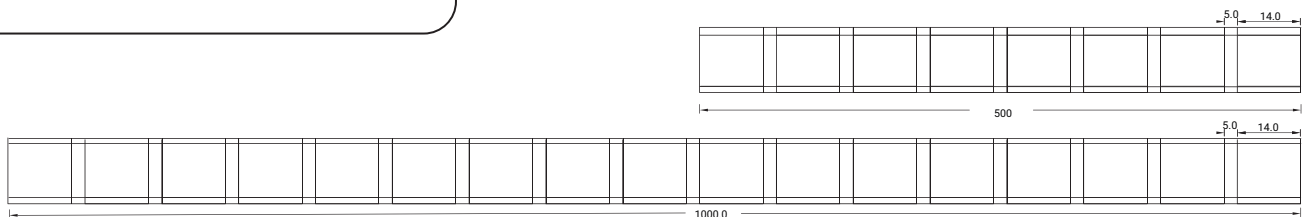
Dimension



Installation Way



Surface Mounted



Model	W x H (mm)	Standard Length
ALC16S02FLX05	20.40 x 19.79	500mm
ALC16S02FLX10		1000mm



# LFX NEON SERIES 16 SPEC SHEET

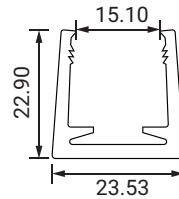
LFX-N-16 -RGBW- 24V



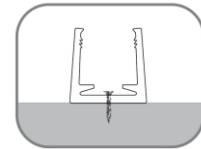
## PLASTIC CHANNEL



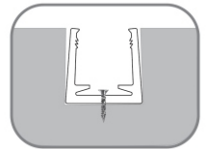
Dimension



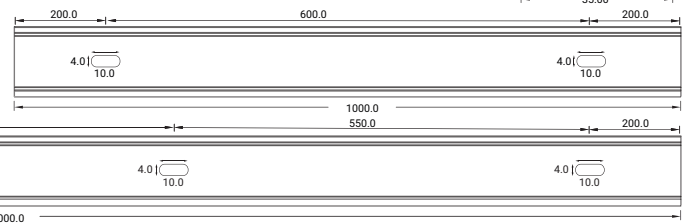
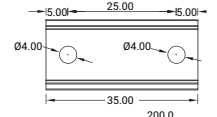
Installation Way



Surface Mounted



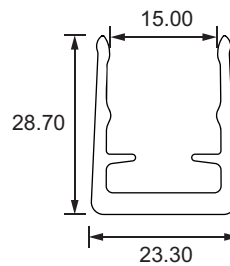
Recessed



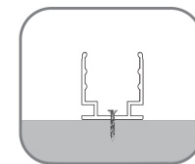
Model	W x H (mm)	Standard Length	Screw Holes	Holes Numbers
PC16/17S02-T-100	23.53 x 22.90	1000mm	Ø4.0mm	2



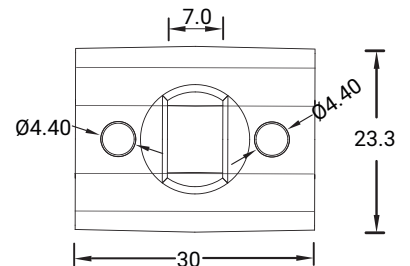
Dimension



Installation Way



Surface Mounted



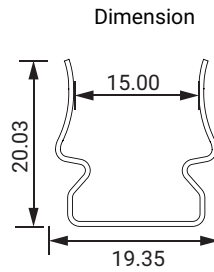
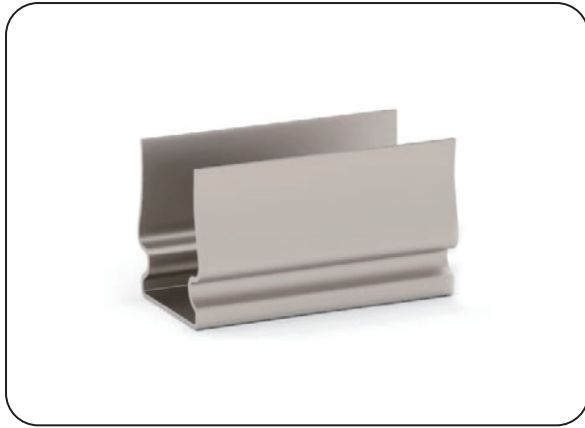
Model	W x H (mm)	Standard Length	Screw Holes	Holes Numbers
SJJ-ZSH-008-PC	23.30 x 28.70	30mm	Ø4.40mm	2

# LFX NEON SERIES 16 SPEC SHEET

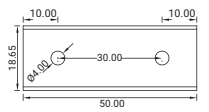
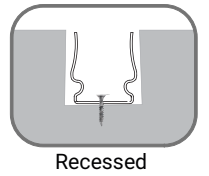
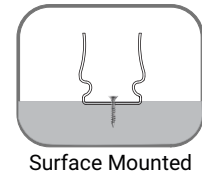
LFX-N-16 -RGBW- 24V



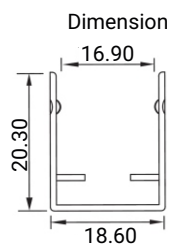
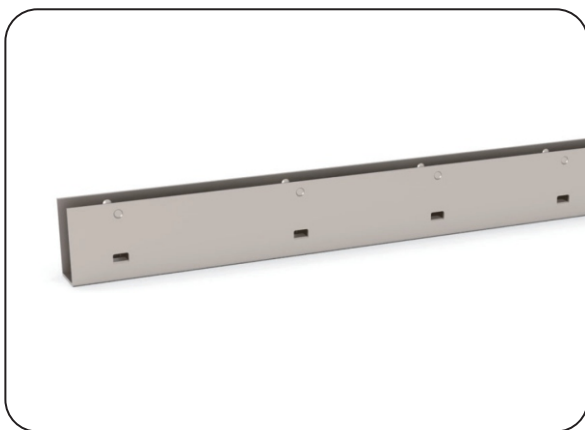
## STAINLESS STEEL CHANNEL



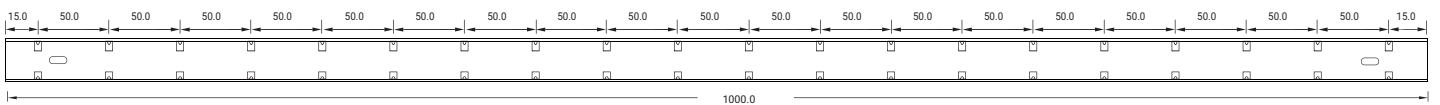
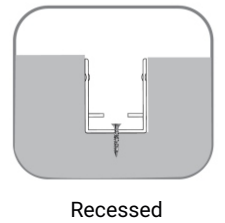
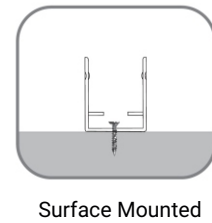
**Installation Way**



Model	W x H (mm)	Standard Length	Screw Holes	Holes Numbers
SSC16S01-05	19.35 x 20.03	50mm	Ø4.0mm	2



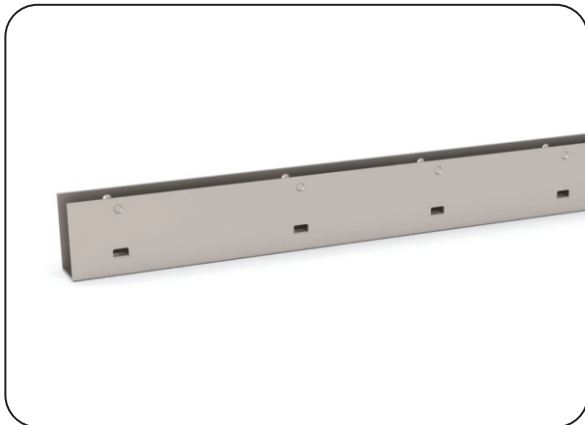
**Installation Way**



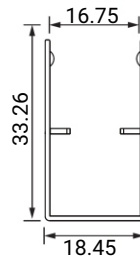
Model	W x H (mm)	Standard Length	Screw Holes	Holes Numbers
SSC16S02-100	18.60 x 20.30	1000mm	4.0 x 10mm	2

# LFX NEON SERIES 16 SPEC SHEET

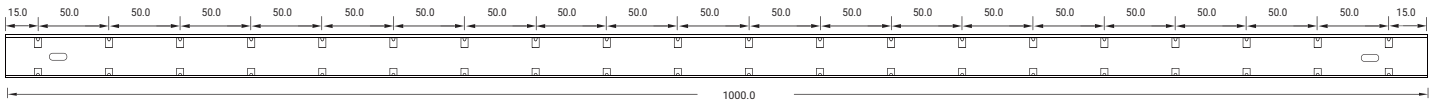
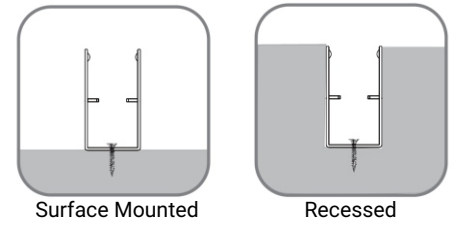
LFX-N-16 -RGBW- 24V



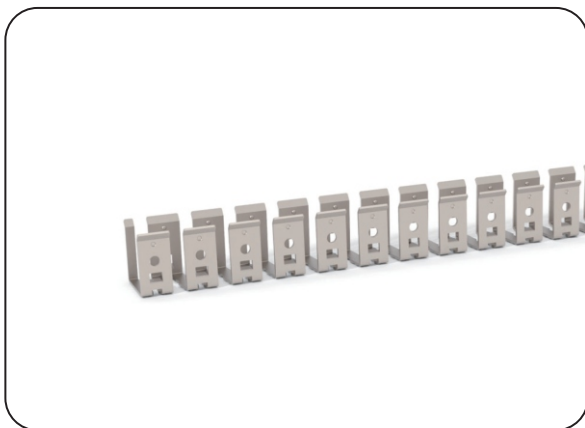
Dimension



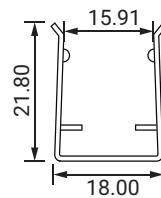
Installation Way



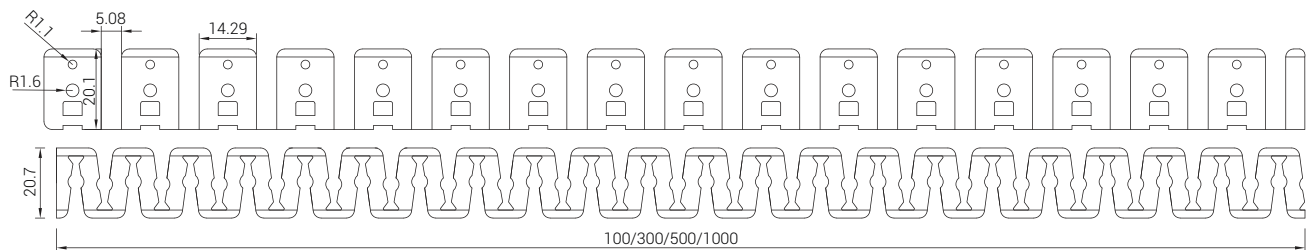
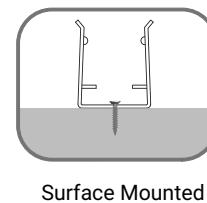
Model	W x H (mm)	Standard Length	Screw Holes	Holes Numbers
SSC16H01-100	18.45 x 33.26	1000mm	4.0 x 10mm	2



Dimension



Installation Way

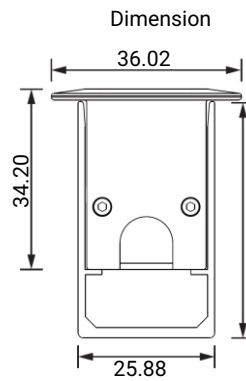
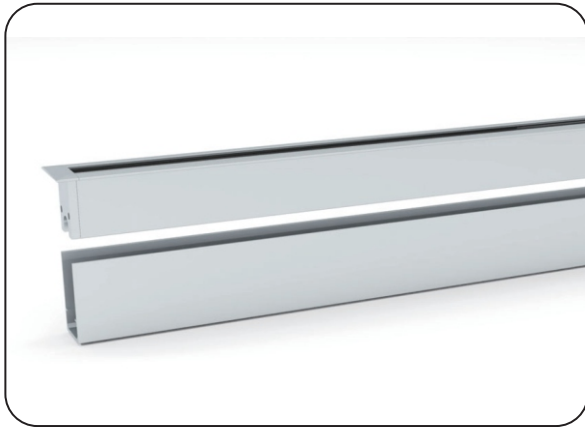


Model	W x H (mm)	Standard Length
SSC16FLX01	18.00 x 21.80	100mm
SSC16FLX03		300mm
SSC16FLX05		500mm
SSC16FLX10		1000mm

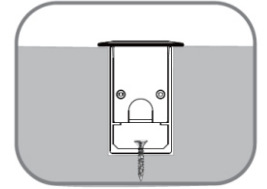
# LFX NEON SERIES 16 SPEC SHEET

LFX-N-16 -RGBW- 24V

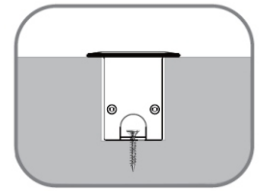
## BURIED AND RECESSED TYPE



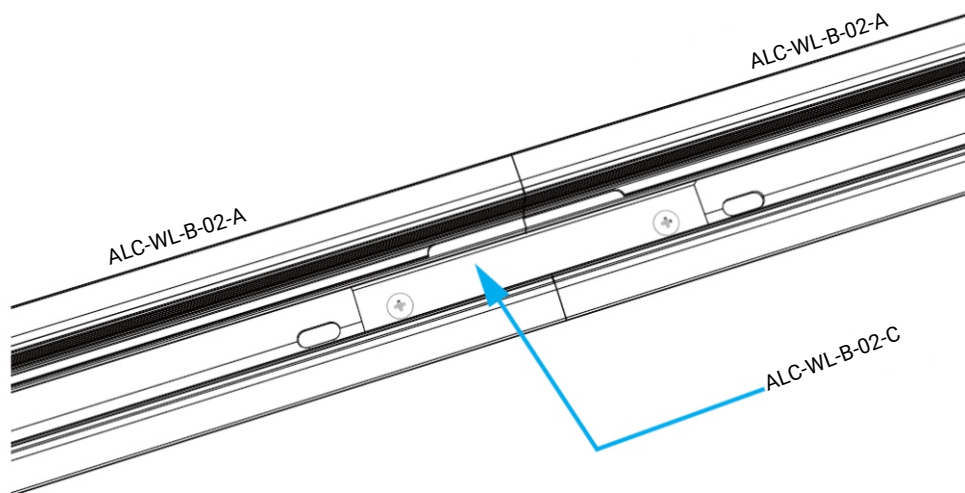
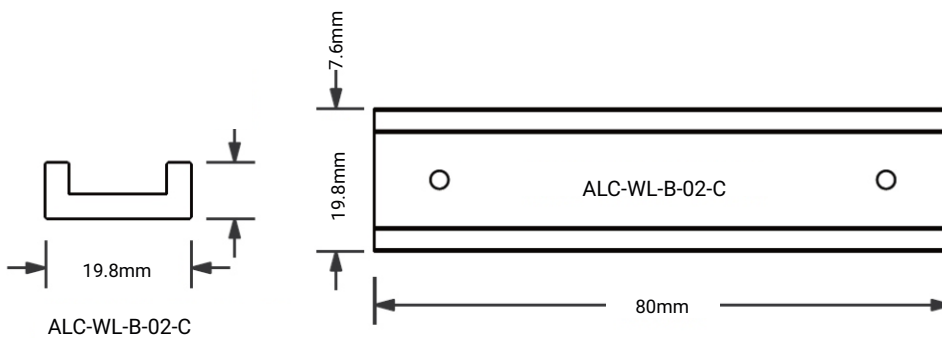
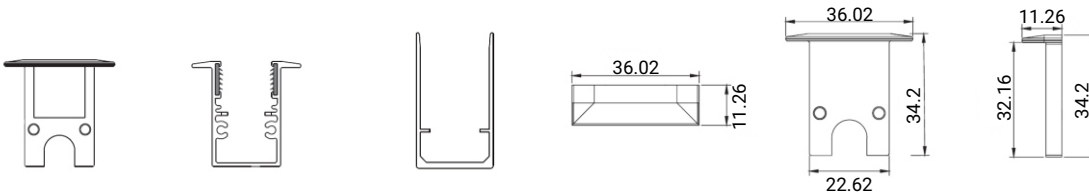
### Installation Way



ALC-WL-B-02-A  
ALC-WL-B-02-B  
Buried Mounted

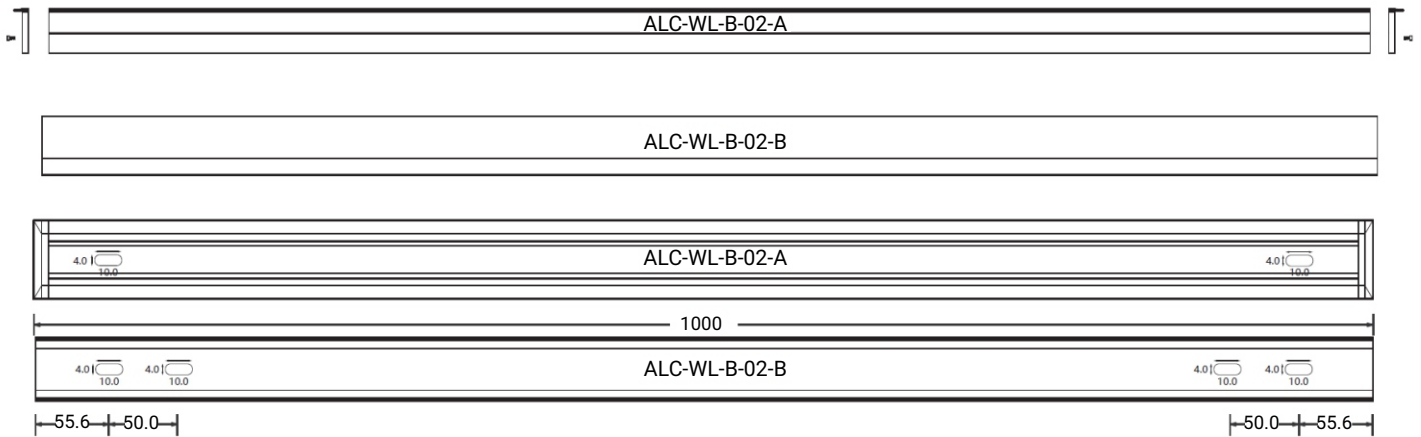


ALC-WL-B-02-A  
Recessed

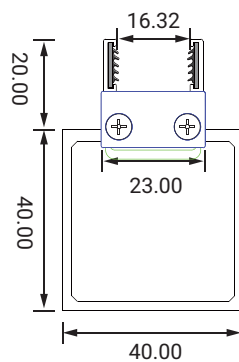


# LFX NEON SERIES 16 SPEC SHEET

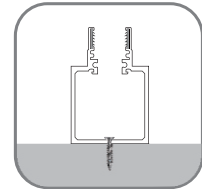
LFX-N-16 -RGBW- 24V



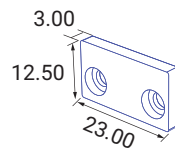
Model	W x H (mm)	Installation Way	Optional Length
ALC-WL-B-02-A	36.02 x 34.20	Recessed	500/1000/2000mm
ALC-WL-B-02-B	25.88 x 44.86	Buried Mounted	500/1000/2000mm
ALC-WL-B-02-C	19.8 x 7.6	Connective Accessories	80mm



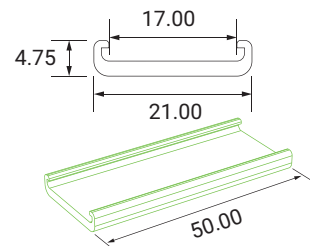
Installation Way



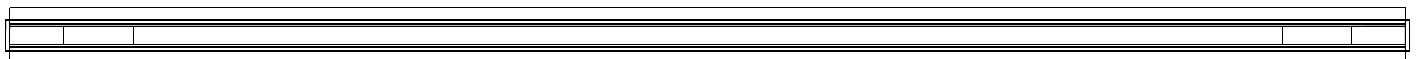
Surface Mounted



ALC-16H03-GZ  
Fixing Cap



ALC-16H03-GDB-50  
Connective Fixing Clips



Model	W x H (mm)	Installation Way	Optional Length
ALC16H03-100	40.00 x 60.00	Surface Mounted	1000/2000mm
ALC16H03-200		Surface Mounted	1000/2000mm