

OAKEN ROUND LARGE RGBW SPEC SHEET

OAK-R-L-RGBW



The newest addition to the Oaken series, this RGBW spotlight is designed to highlight outdoor spaces while creating versatile moods in any environment. Featuring four optical configurations ranging from 15° to 54°, it offers the flexibility to adapt to various lighting needs. This luminaire is engineered to withstand extreme outdoor conditions, delivering reliable and consistent performance in all weather. Ideal for retail displays, art galleries, and hospitality settings where impactful, adaptable lighting is essential.

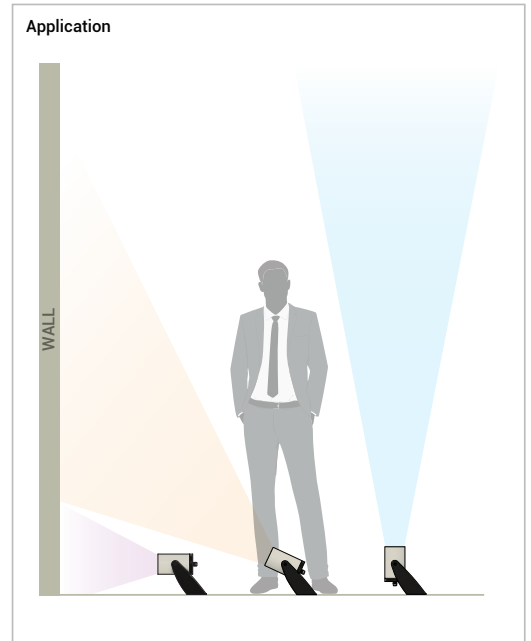
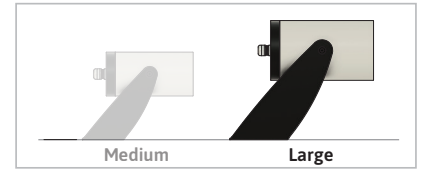
SPECIFICATION

OPERATING VOLTAGE	24V DC
OPERATING TEMPERATURE	-20°C to + 50°C
CRI	80, 90* (* = special order)
CONTROL	DMX
NO OF LED	1
LIGHT SOURCE	Cree XML Color
COLOR	RGBW
BEAM ANGLE	15°, 23°, 35°, 54°
FIXTURE CONNECTION	Pigtail
AVAILABLE IP RATING	IP66

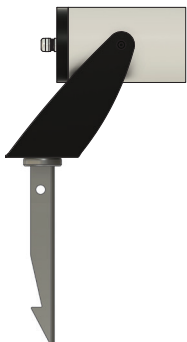
*" represent special order, please contact factory for detail.

OPTICAL DATA (RGBW 3000K)

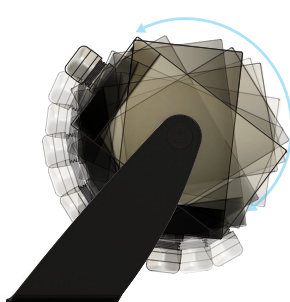
Beam Angles	RGBW (3000K)	Lumens	Wattages	Lumens per Watt
15°	Red	100 lm	4.8 W	20.83 lm/W
	Green	174.5 lm	5.2 W	33.56 lm/W
	Blue	44.89 lm	5.4 W	8.31 lm/W
	White (3000K)	210 lm	5.2 W	40.38 lm/W
	All On	490 lm	18.2 W	26.92 lm/W
23°	Red	100 lm	4.8 W	20.83 lm/W
	Green	167.5 lm	5.2 W	32.21 lm/W
	Blue	42.97 lm	5.4 W	7.96 lm/W
	White (3000K)	211 lm	5.2 W	40.58 lm/W
	All On	495 lm	18.2 W	27.20 lm/W
35°	Red	100 lm	4.8 W	20.83 lm/W
	Green	165.8 lm	5.2 W	31.89 lm/W
	Blue	42.6 lm	5.4 W	7.89 lm/W
	White (3000K)	210 lm	5.2 W	40.38 lm/W
	All On	495 lm	18.2 W	27.20 lm/W
54°	Red	100 lm	4.8 W	20.83 lm/W
	Green	164.6 lm	5.2 W	31.65 lm/W
	Blue	42.8 lm	5.4 W	7.93 lm/W
	White (3000K)	212 lm	5.2 W	40.77 lm/W
	All On	489 lm	18.2 W	26.87 lm/W



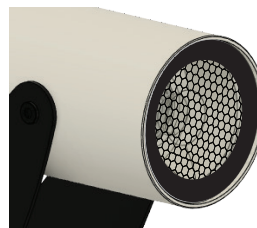
Spike Mount



180° Angle Swivel Base



Honeycomb Louver (Optional)



Visor (Optional)



OAKEN ROUND LARGE RGBW SPEC SHEET

OAK-R-L-RGBW



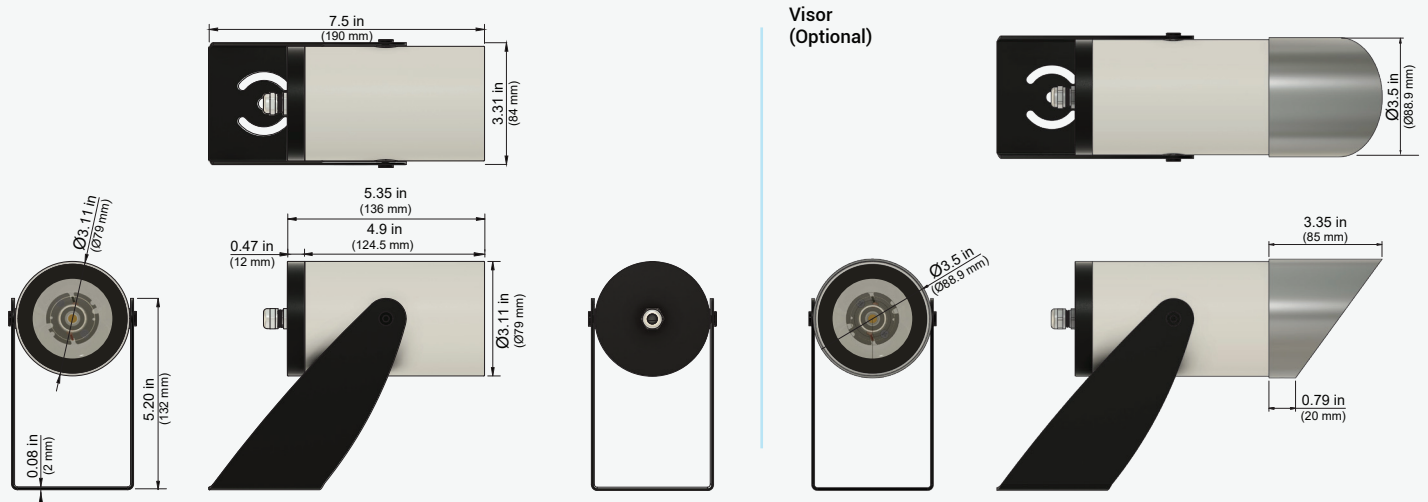
ORDERING CODE

PRODUCT SERIES	TYPE	SIZE	POWER	COLOR TEMPERATURE	BEAM ANGLE	MOUNTING	VOLTAGE	CONTROL	ACCESSORIES
OAK - Oaken	R - Round	L - Large	24W - 24 Watts	RGBW3K - RGBW(3000K)	15D - 15 Degree	SM - Surface Mount	DC - 24V DC	DMX - DMX	N - None
				RGBW4K - RGBW(4000K)	23D - 23 Degree	SP - Spike Mount			H - Honeycomb
				RGBW6K - RGBW(6000K)	35D - 35 Degree				V - Visor
					54D - 54 Degree				

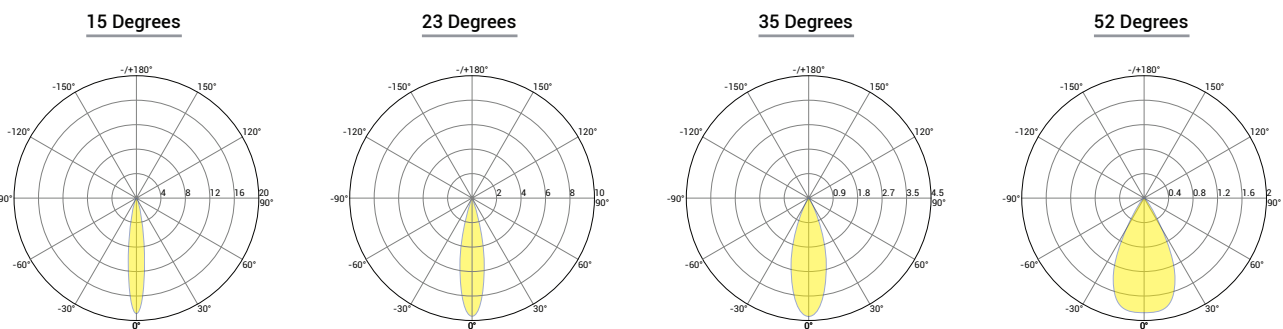
FIXTURE FINISHING			
BODY FINISH		TRIM FINISH	
BWH - White	TWH - White	TBL - Black	TSL - Silver
BBL - Black	TBL - Black	TSL - Silver	TGD - Gold
BSL - Silver	TSL - Silver	TGD - Gold	TXX - Custom
BXX - Custom	TGD - Gold	TXX - Custom	

Sample: OAK-R-L-24W-RGBW3K-23D-SM-DC-DMX-V-BBL-TBL

DIMENSIONS



PHOTOMETRIC DATA



Spectral Distribution

