

LFX COB SERIES SPEC SHEET

LFX-18W-COB-840

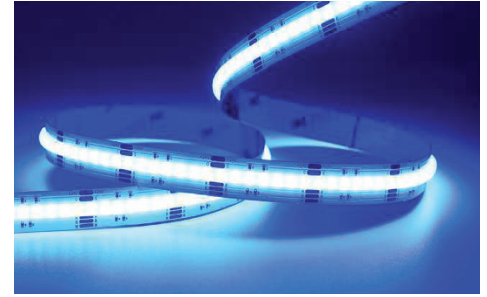


3M IP20/65/68
TAPE INGRESS PROTECTION



18W

The YYZ LFX COB Series delivers uniform, homogeneous lighting with no visible light points. Featuring COB technology, the LEDs are fully encapsulated to minimize thermal resistance, enhance LED lifespan, and ensure high light flux density. This design reduces glare and provides consistent, even illumination. Ideal for indirect lighting applications, it is well-suited for use in offices, residential spaces, furniture, and any setting requiring expansive, uniform lighting surfaces. As an RGBW fixture, it offers full-color customization for dynamic and versatile lighting effects.



SPECIFICATION

| | |
|-------------------|------------------------|
| OPERATING VOLTAGE | 24V DC |
| POWER | 5.48W/ft (18W/m) |
| LED COUNT | 256LEDs/ft (840LEDs/m) |
| CUTTING UNIT | 25 LEDs |
| CUTTING LENGTH | 1.31"/33.33mm |
| COLOR | RGBW |
| CONTROL | DMX |
| LENGTH/REEL | 16.4ft (5m) |
| BEAM ANGLE | 180° |
| OPERATING TEMP | -40°C to 55°C |
| IP RATING | IP20/65/68 |
| WARRANTY | 2 years |

V 24V DC
Operating Voltage

W 18w/m
Rated power

3M Tape on the back
Mounting

LUMENS (RGBW)

| | |
|-------|--------------------|
| RED | 33lm/ft (110lm/m) |
| GREEN | 137lm/ft (450lm/m) |
| BLUE | 18lm/ft (60lm/m) |
| WHITE | 146lm/ft (480lm/m) |

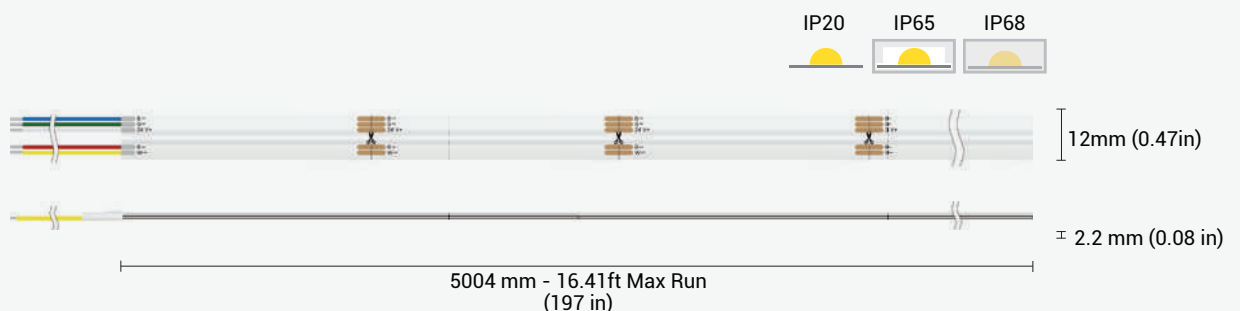
ORDERING CODE

| PRODUCT SERIES | LOCATION | POWER | COLOR | LED TYPE | BIN | LED QTY | VOLTAGE | CC / CV | PCB Width | CRI | LED ROWS | CONNECTION |
|-------------------|---|-------|-------|----------|----------------------|---------------|----------|---------------------|-----------|-------|----------|---|
| LFX - Linear Flex | I - Indoor (IP20) O - Outdoor (IP65/67) U - Underwater (IP68) | 18W | RGBW | COB | Z3 - High End 3 Step | 840 - 840LEDs | 24 - 24V | CC-Constant Current | 12 - 12mm | N-80+ | 1-Single | HT - Hard Wire Tail OC - Outdoor Connector |

| MODEL DESIGNATION | CLASSIFICATION COLOR CONTROL | LIGHT EMITTING DIRECTION | LED POWER | PCB COLOR | LENGTH PER REEL |
|-------------------|------------------------------|--------------------------|-----------|-----------|-----------------|
| R - Regular | M - Monochrome | T - Top Emitting | H - High | W - White | L05 - 5 meters |

Sample: LFX - I - 18W - RGBW - COB - Z3 - 840 - 24 - CC - 12 - N - 1 - HT - RMTHWL05

DIMENSIONS



LFX COB SERIES SPEC SHEET

LFX-21W-COB-840

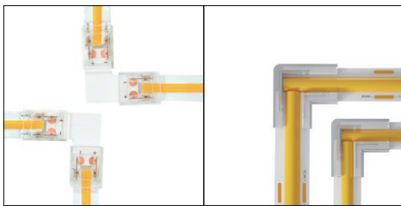


CONNECTORS

RGB

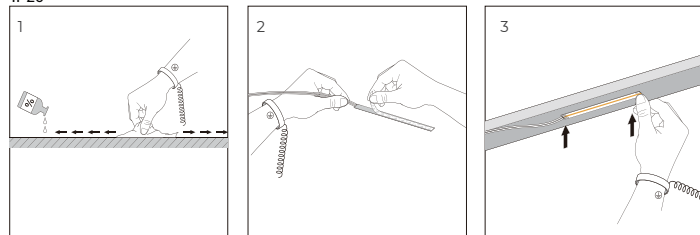
| Series | Product | | | PCB Width | Product NO. |
|--|---------------|-----------------|-------------------------|-----------|---|
| | BB PCB TO PCB | XB Cable to PCB | BXB PCB TO Cable to PCB | | |
| LFX-COB Series Maximum Voltage: 36V Maximum Current: 5A | | | | 10mm | COB3/4P-C10BB-G1 COB4P-10XB-G1 COB4P-C10MBXB-G1 |
| LFX-COB Series Maximum Voltage: 36V Maximum Current: 5A | | | N/A | 10mm | COB4P-C10BB SMD4P-C10BB COB4P-C10XB |

L-Corner

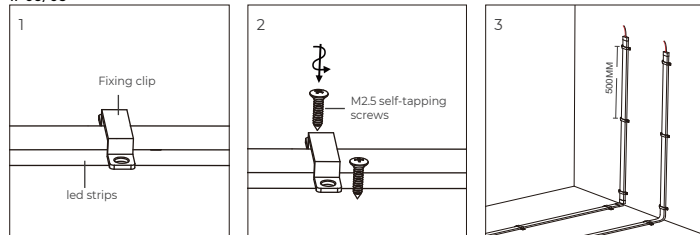


INSTALLATION

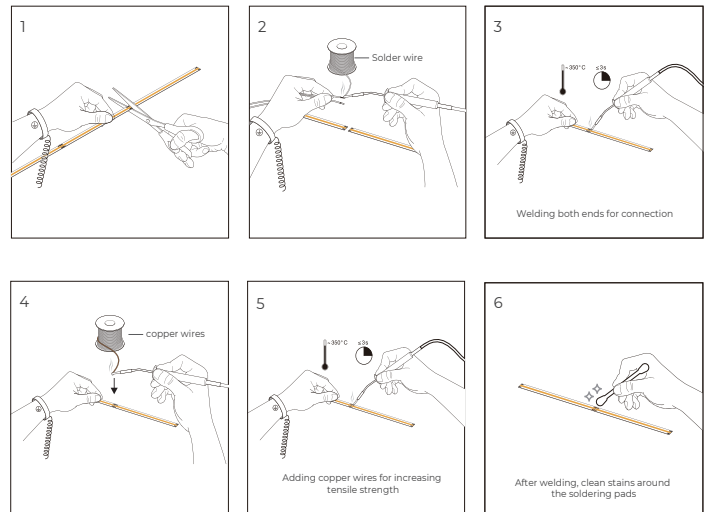
IP20



IP65/68



CUTTING



APPLICATION NOTE

