

LFX COB SERIES SPEC SHEET

LFX-13W-COB-528



The YYZ LFX COB Series provides uniform, glare-free lighting with no visible light points. Featuring COB technology, the LEDs are encapsulated to reduce thermal resistance, extend lifespan, and ensure high light flux density. Ideal for indirect lighting in offices, homes, and furniture, it offers consistent, even illumination.



SPECIFICATION

OPERATING VOLTAGE	12/24V DC
POWER	3.96W/ft (13W/m)
LED COUNT	161LEDS/ft (528LEDS/m)
CUTTING LENGTH	Free Cut
LUMENS	357lm/ft (1170 lm/m) (@3000K)
CCT	3000K, 4000K, 6500K
CRI	90
CONTROL	Switch / 0-10V Dimming
LENGTH/REEL	16.4ft (5.05m)
BEAM ANGLE	180°
OPERATING TEMP	-40°C to 55°C
IP RATING	IP20/65/68
WARRANTY	2 years

- V** 12-24V DC
Operating Voltage
- W** 13w/m
Rated power
- 3M** Tape on the back
Mounting

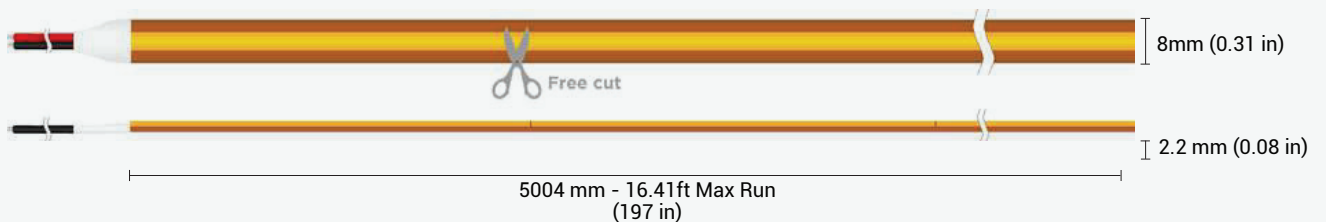
ORDERING CODE

PRODUCT SERIES	LOCATION	POWER	COLOR	LED TYPE	BIN	LED QTY	VOLTAGE	CC /CV	PCB Width	CRI	LED ROWS	CONNECTION
LFX - Linear Flex	I - Indoor (IP20)	13W	CT30 - 3000K	COB	Z3 - High End 3 Step	528-528LEDS	12 - 12V	CV-Constant Voltage	8 - 8mm	H-90+	1-Single	HT - Hard Wire Tail
	O - Outdoor (IP65/67)		CT40 - 4000K									OC - Outdoor Connector
	U - Underwater (IP68)		CT65 - 6500K									

MODEL DESIGNATION	CLASSIFICATION COLOR CONTROL	LIGHT EMITTING DIRECTION	LED POWER	PCB COLOR	LENGTH PER REEL
R - Regular	M - Monochrome	T - Top Emitting	L - Low H - High	W - White	L05 - 5 meters

Sample: LFX - I - 13W - CT30 - COB - Z3 - 528 - 24 - CC - 8 - H - 1 - HT - RMTHWL05

DIMENSIONS



LFX COB SERIES SPEC SHEET

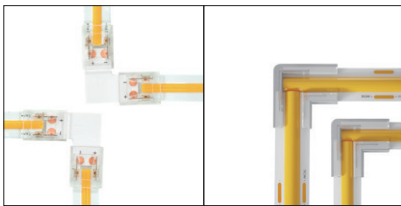
LFX-13W-COB-528

CONNECTORS

MONO

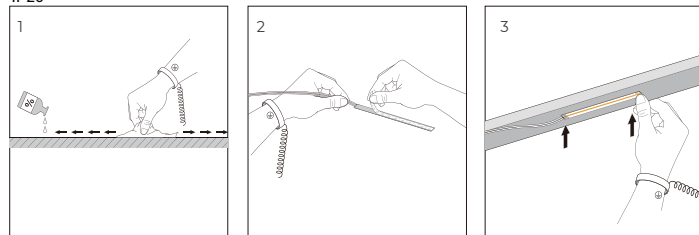
Series	Product			PCB Width	Product NO.
	BB PCB TO PCB	XB Cable to PCB	BXB PCB TO Cable to PCB		
LFX-COB Series Maximum Voltage: 36V Maximum Current: 5A				8mm	COB2P-CO8BB-G1 COB2P-CO8XB-G1 COB2P-CO8MBXB-G1
				10mm	COB2P-CO10BB-G1 COB2P-CO10XB-G1 COB2P-CO10MBXB-G1
LFX-COB Series Maximum Voltage: 36V Maximum Current: 5A				8mm	COB2P-CO8BB-G1 COB2P-CO8XB-G1 COB2P-CO8MBXB-G1
				10mm	COB2P-CO10BB-G1 COB2P-CO10XB-G1 COB2P-CO10MBXB-G1

L-Corner

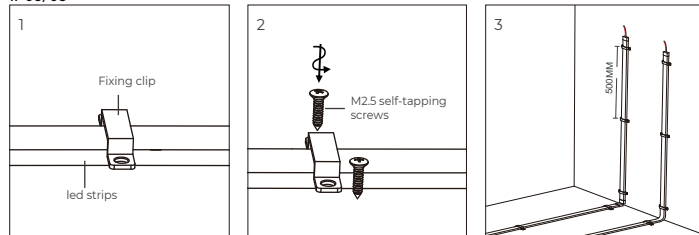


INSTALLATION

IP20



IP65/68



APPLICATION NOTE

