

# LFX COB SERIES SPEC SHEET

LFX-8W-COB-320-BG



**3M** TAPE **IP67** INGRESS PROTECTION

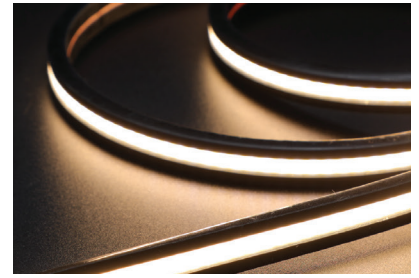


**8W**

The YYZ LFX COB Series provides uniform, glare-free lighting with no visible light points. Featuring COB technology, the LEDs are encapsulated to reduce thermal resistance, extend lifespan, and ensure high light flux density. Ideal for indirect lighting in offices, homes, and furniture, it offers consistent, even illumination.

## SPECIFICATION

|                          |                              |
|--------------------------|------------------------------|
| <b>OPERATING VOLTAGE</b> | 24V DC                       |
| <b>POWER</b>             | 2.43W/ft (8W/m)              |
| <b>LED COUNT</b>         | 97LEDs/ft (320LEDs/m)        |
| <b>CUTTING UNIT</b>      | 16 LEDs                      |
| <b>CUTTING LENGTH</b>    | 1.97"/50mm                   |
| <b>LUMENS</b>            | 158lm/ft (520 lm/m) (@3000K) |
| <b>CCT</b>               | 2700K, 3000K, 4000K, 6500K   |
| <b>CRI</b>               | 90                           |
| <b>CONTROL</b>           | Switch / 0-10V Dimming       |
| <b>LENGTH/REEL</b>       | 16.56ft (5.05m)              |
| <b>BEAM ANGLE</b>        | 180°                         |
| <b>OPERATING TEMP</b>    | -40°C to 55°C                |
| <b>IP RATING</b>         | IP67                         |
| <b>WARRANTY</b>          | 3 years                      |



**V** 24V DC  
Operating Voltage

**W** 8w/m  
Rated power

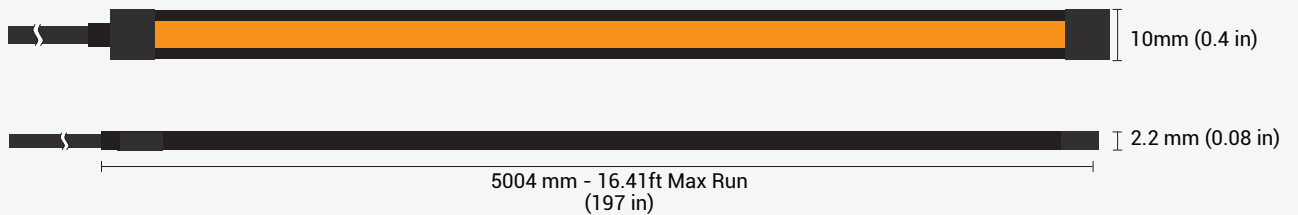
## ORDERING CODE

| PRODUCT SERIES    | LOCATION              | POWER | COLOR  | LED TYPE | BIN                  | LED QTY     | VOLTAGE  | CC /CV              | PCB Width | CRI   | LED ROWS | CONNECTION                                    |
|-------------------|-----------------------|-------|--|----------|----------------------|-------------|----------|---------------------|-----------|-------|----------|---|
| LFX - Linear Flex | O - Outdoor (IP65/67) | 8W    | CT27 - 2700K<br>CT30 - 3000K<br>CT40 - 4000K<br>CT65 - 6500K | COB      | Z3 - High End 3 Step | 320-320LEDs | 24 - 24V | CV-Constant Voltage | 10-10mm   | H-90+ | 1-Single | HT - Hard Wire Tail<br>OC - Outdoor Connector |

| MODEL DESIGNATION | CLASSIFICATION COLOR CONTROL | LIGHT EMITTING DIRECTION | LED POWER | PCB COLOR | LENGTH PER REEL |
|-------------------|------------------------------|--------------------------|-----------|-----------|-----------------|
| R - Regular       | M - Monochrome               | T - Top Emitting         | H - High  | B - Black | L05 - 5 meters  |

Sample: LFX - I - 8W - CT27 - COB - Z3 - 320 - 24 - CC - 10 - H - 1 - HT - RMTHBL05

## DIMENSIONS



## ACCESSORIES SPECIFICATIONS

End Cup



Front Outlet End Cap



Clips



Glue



Screws



# LFX COB SERIES SPEC SHEET

LFX-8W-COB-320-BG

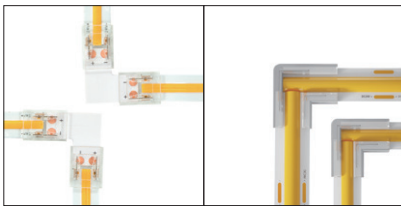


## CONNECTORS

### MONO

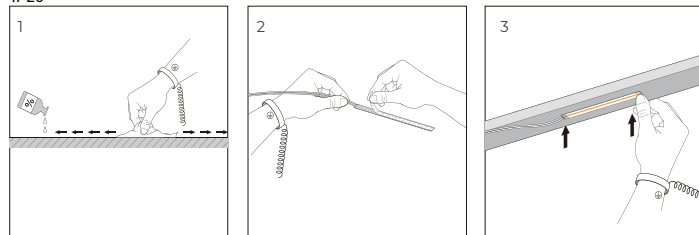
| Series   | Product       |                 |                         | PCB Width | Product NO.   |
|--|---------------|-----------------|-------------------------|-----------|---|
|  | BB PCB TO PCB | XB Cable to PCB | BXB PCB TO Cable to PCB |           |   |
| <b>LFX-COB Series</b><br>Maximum Voltage: 36V<br>Maximum Current: 5A |               |                 |                         | 8mm       | COB2P-CO8BB-G1<br>COB2P-CO8XB-G1<br>COB2P-CO8MBXB-G1    |
|  |               |                 |                         | 10mm      | COB2P-CO10BB-G1<br>COB2P-CO10XB-G1<br>COB2P-CO10MBXB-G1 |
| <b>LFX-COB Series</b><br>Maximum Voltage: 36V<br>Maximum Current: 5A |               |                 |                         | 8mm       | COB2P-CO8BB-G1<br>COB2P-CO8XB-G1<br>COB2P-CO8MBXB-G1    |
|  |               |                 |                         | 10mm      | COB2P-CO10BB-G1<br>COB2P-CO10XB-G1<br>COB2P-CO10MBXB-G1 |

### L-Corner

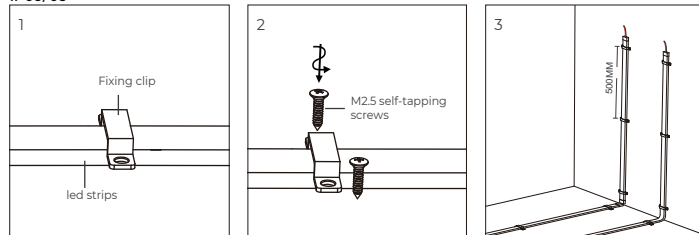


## INSTALLATION

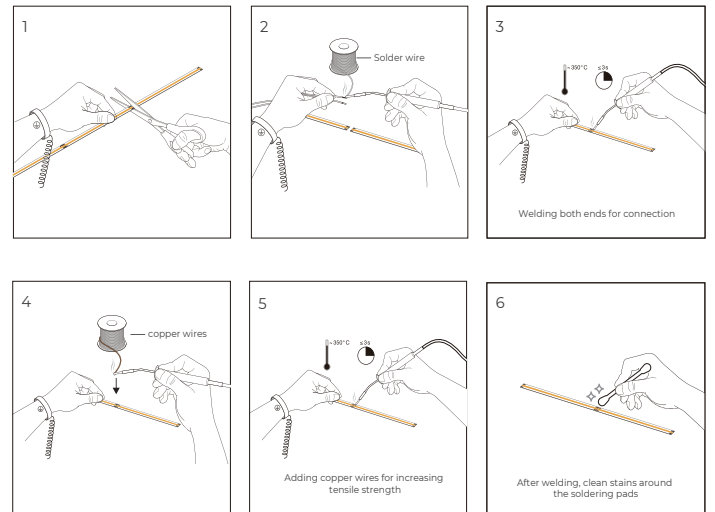
### IP20



### IP65/68



## CUTTING



## APPLICATION NOTE

