

LFX COB SERIES SPEC SHEET



LFX-12W-COB-400



The YYZ LFX COB Series delivers uniform, homogeneous lighting with no visible light points. Featuring COB technology, the LEDs are fully encapsulated to minimize thermal resistance, enhance LED lifespan, and ensure high light flux density. This design reduces glare and provides consistent, even illumination. Ideal for indirect lighting applications, it is well-suited for use in offices, residential spaces, furniture, and any setting requiring expansive, uniform lighting surfaces.



SPECIFICATION

OPERATING VOLTAGE	12/24V DC
POWER	3.66W/ft (12W/m)
LED COUNT	121LEDS/ft (400LEDS/m)
CUTTING UNIT	40 LEDs
CUTTING LENGTH	3.92"/100mm
LUMENS	329lm/ft (1080 lm/m) (@3000K)
CCT	2700K, 3000K, 4000K, 6500K
CRI	90
CONTROL	Switch / 0-10V Dimming
LENGTH/REEL	16.4ft (5m)
BEAM ANGLE	180°
OPERATING TEMP	-40°C to 55°C
IP RATING	IP20/65/68
WARRANTY	5 years

- V** 12-24V DC
Operating Voltage
- W** 12w/m
Rated power
- 3M** Tape on the back
Mounting

ORDERING CODE

PRODUCT SERIES	LOCATION	POWER	COLOR	LED TYPE	BIN	LED QTY	VOLTAGE	CC /CV	PCB Width	CRI	LED ROWS	CONNECTION
LFX - Linear Flex	I - Indoor (IP20)	12W	CT27 - 2700K	COB	Z3 -High End 3 Step	400-400LEDS	12 - 12V	CV-Constant Voltage	8 - 8mm	H-90+	1-Single	HT - Hard Wire Tail
	O - Outdoor (IP65/67)		CT30 - 3000K									OC - Outdoor Connector
	U - Underwater (IP68)		CT40 - 4000K									
			CT65 - 6500K									

MODEL DESIGNATION	CLASSIFICATION COLOR CONTROL	LIGHT EMITTING DIRECTION	LED POWER	PCB COLOR	LENGTH PER REEL
R - Regular	M - Monochrome	T - Top Emitting	L - Low H - High	W - White	L05 - 5 meters

Sample: LFX - I - 12W - CT30 - COB - Z3 - 400 - 12 - CC - 8 - H - 1 - HT - RMTLWL05

DIMENSIONS



LFX COB SERIES SPEC SHEET

LFX-12W-COB-400

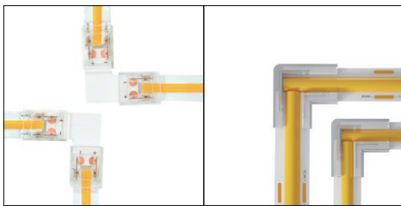


CONNECTORS

MONO

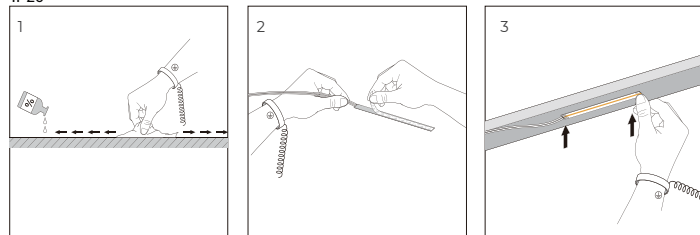
Series	Product			PCB Width	Product NO.
	BB PCB TO PCB	XB Cable to PCB	BXB PCB TO Cable to PCB		
LFX-COB Series Maximum Voltage: 36V Maximum Current: 5A				8mm	COB2P-CO8BB-G1 COB2P-CO8XB-G1 COB2P-CO8MBXB-G1
				10mm	COB2P-CO10BB-G1 COB2P-CO10XB-G1 COB2P-CO10MBXB-G1
LFX-COB Series Maximum Voltage: 36V Maximum Current: 5A				8mm	COB2P-CO8BB-G1 COB2P-CO8XB-G1 COB2P-CO8MBXB-G1
				10mm	COB2P-CO10BB-G1 COB2P-CO10XB-G1 COB2P-CO10MBXB-G1

L-Corner

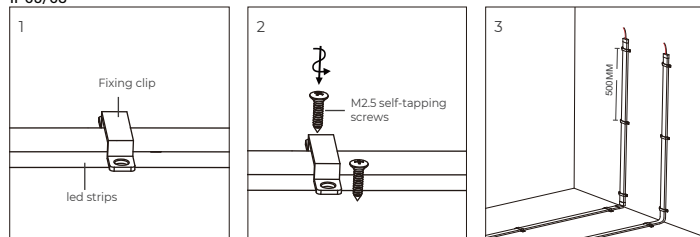


INSTALLATION

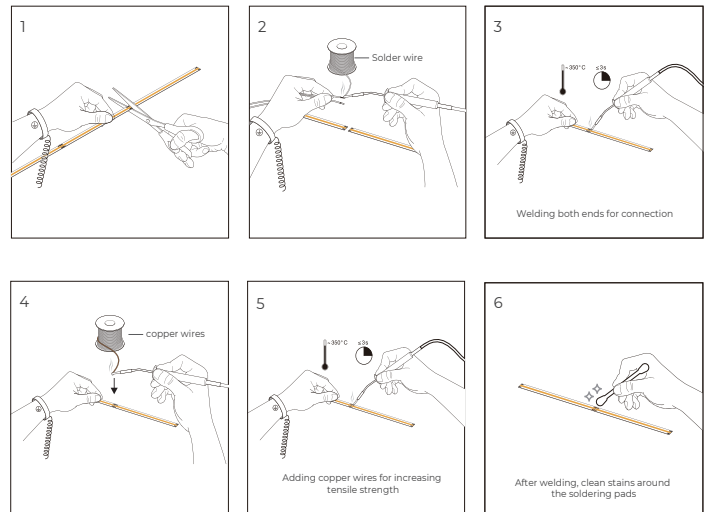
IP20



IP65/68



CUTTING



APPLICATION NOTE

