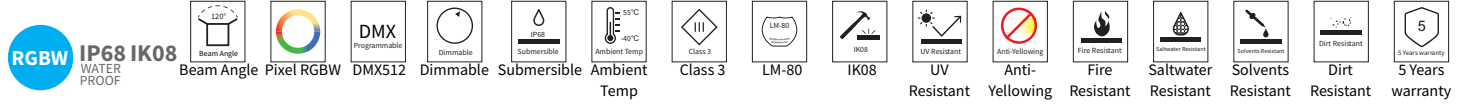


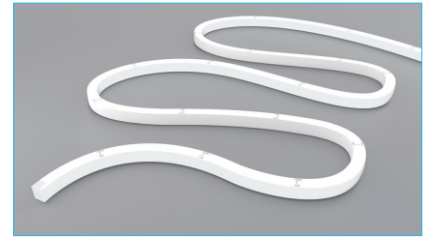
LFX NEON SERIES



LFX-1717-VB-RGBW-DMX-PIXEL CHASING (Vertical Bending Version)



YYZ LFX Neon series is designed to provide a very bright, crisp consistent and homogenized illumination that will accentuate any building, structure, or artistic flourish. Using high brightness surface mounted LEDs, behind a first-class eco-friendly UV-resistant Silicone polymer encapsulated flexible chamber material, the LFX Neon will provide your project with bright, consistent traces of light in RGBW Pixel Chasing. The fixture consists of uniform and even lighting with no LED hotspot. LFX Neon has a transverse minimum radius of 120mm and is vertical bendable. Easy to install, can be cut and reconnected with IP68 protected connector. The product is supplied in 5m standard rolls or custom as needed.



FEATURES

LIGHT SOURCE	Lumileds SMD LED 5050
WORKING VOIAGE	DC 24V
RATED POWER	18W/m
LED QUANTITY	70 Leds / m
RADIANCE ANGLE	120°
LAMP LIFE	70,000 Hours L70@25°C 50,000 Hours L70@50°C
MOUNTING	Mounting clip / chanel
CONNECTION	Outdoor rated connections
CUTTING INCREMENTS	100mm (1 Unit, 7LEDs)
MINIMUM BEND DIAMETER	120mm
DIMENSIONS	16.5mm(W) x 16.5mm(H)
OPERATING TEMP	-40° C - +55° C
STORAGE TEMP	-20° C - +55° C
CONTINUOUS LENGTH	5mtr
WORKING MODE	DMX
PIXEL QUANTITY	10 Pixel per meter
IP RATING	IP68 Wet location submersible <2m

- LUMILEDS LED Quality
- 24 V DC Working Voltage
- 18W/m Rated power

ELECTRICAL DATA

POWER CONSUMPTION	18W/m
SUPPLY VOIAGE	DC 24 V
COLORS	RGBW (2700K, 3000K, 4000K, 5000K)

ORDERING LOGIC

PRODUCT	POWER	COLOR TEMPERATURE
LFX 1717-VB-PXL	18 - 18 W	(RGBW) - RGBW

Sample: LFX 1717-VB-PXL - 18 - RGBW

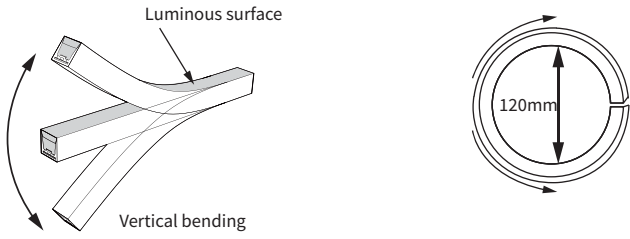
LUMEN CHART

Color	Lumen Output
Red (RE)	60lm/m
Green (GR)	176lm/m
Blue (BL)	34lm/m
RGBW (RGBW)	399lm/m
3000K (CT 30)	193lm/m

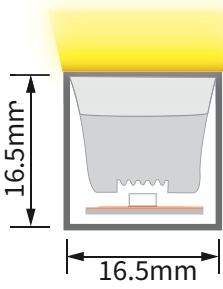
LFX NEON SERIES

LFX-1717-VB-RGBW-DMX-PIXEL CHASING (Vertical Bending Version)

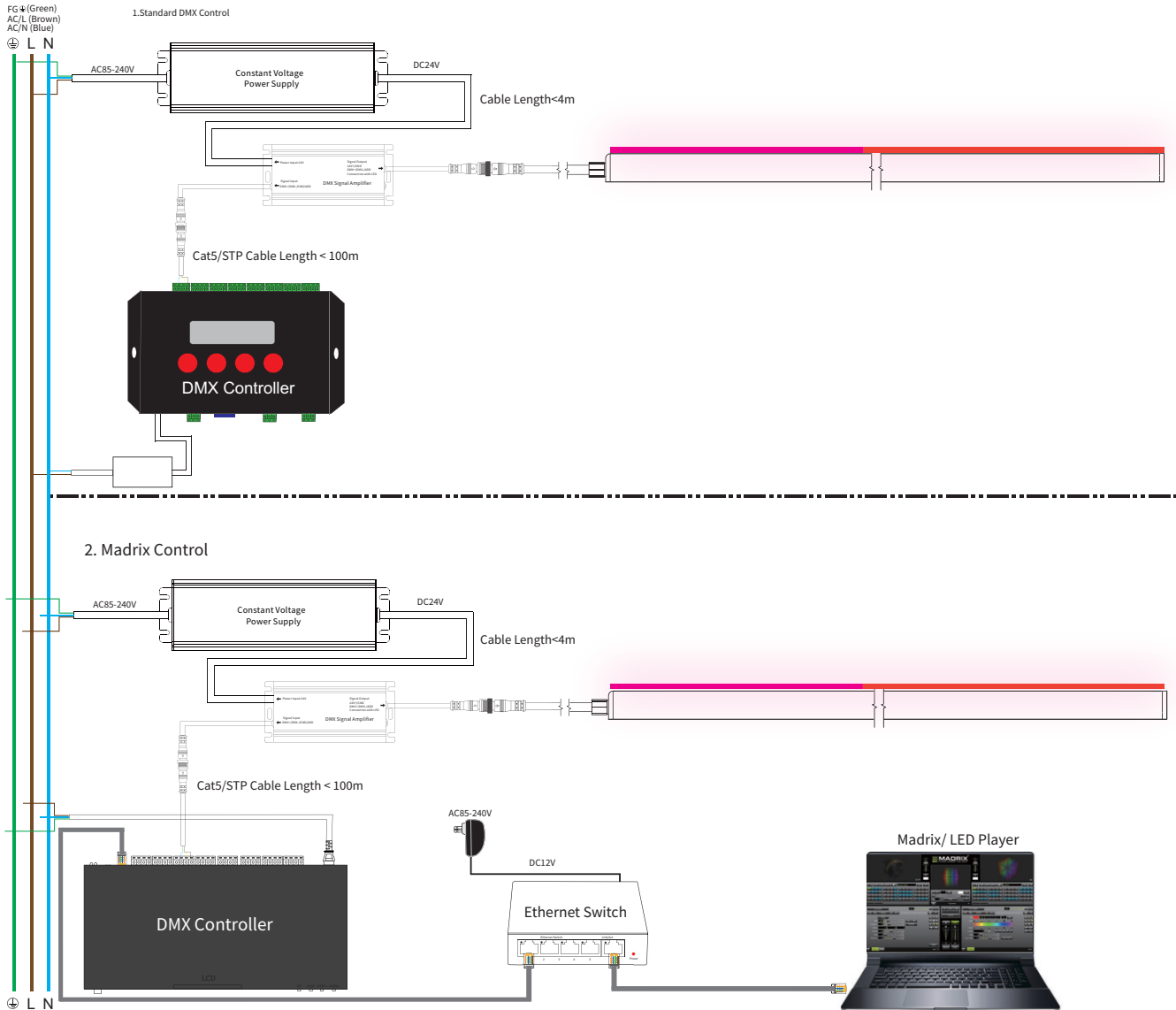
BENDING DETAILS



DIMENSION



DMX PIXEL CHASING CONTROL WIRING DIAGRAM

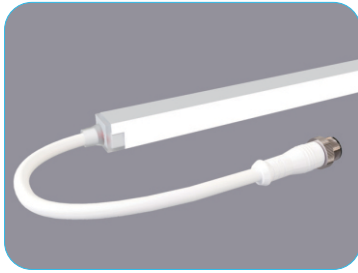


LFX NEON SERIES

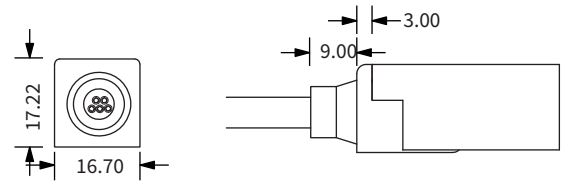
LFX-1717-VB-RGBW-DMX-PIXEL CHASING (Vertical Bending Version)



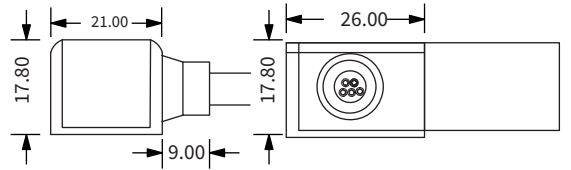
ACCESSORIES



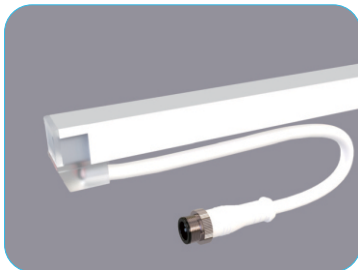
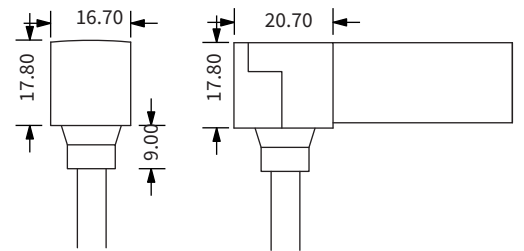
Direct Entry Connector
 YYZ-MIC-DEC-D5-01 (Single Feed-Right Side)
 YYZ-MIC-DEC-D5-02 (Single Feed-Left Side)
 YYZ-MIC-DEC-D5-03 (Double Feed-Both Side)



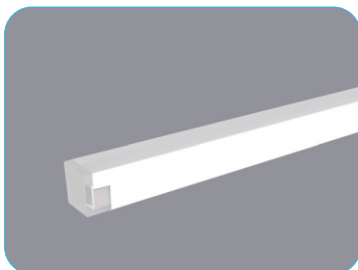
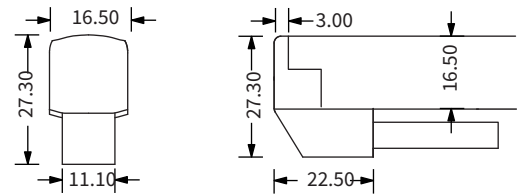
Side Entry Connector
 YYZ-MIC-SEC-D5-01 (Single Feed-Right Side)
 YYZ-MIC-SEC-D5-02 (Single Feed-Left Side)
 YYZ-MIC-SEC-D5-03 (Double Feed-Both Side)



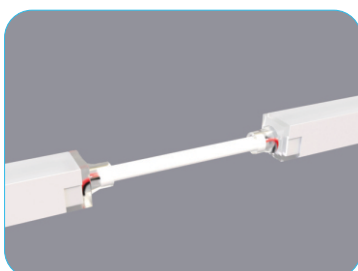
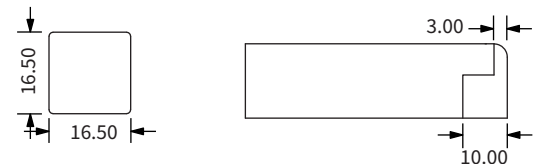
Bottom Entry Connector
 YYZ-MIC-BEC-D5-01 (Single Feed-Right Side)
 YYZ-MIC-BEC-D5-02 (Single Feed-Left Side)
 YYZ-MIC-BEC-D5-03 (Double Feed-Both Side)



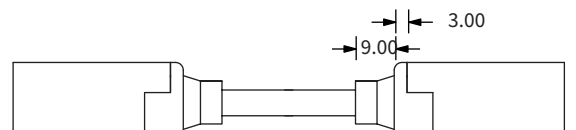
L Shape Entry Connector
 YYZ-MIC-LSEC-D5-01 (Single Feed-Right Side)
 YYZ-MIC-LSEC-D5-02 (Single Feed-Left Side)
 YYZ-MIC-LSEC-D5-03 (Double Feed-Both Side)



End Cap
 YYZ-EC

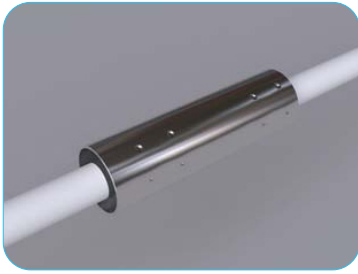


Jumper
 YYZ-JC

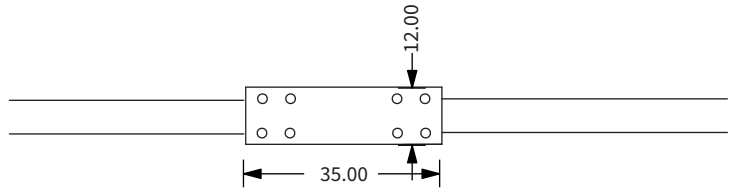


LFX NEON SERIES

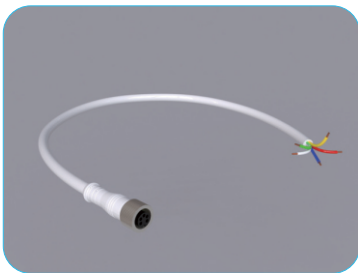
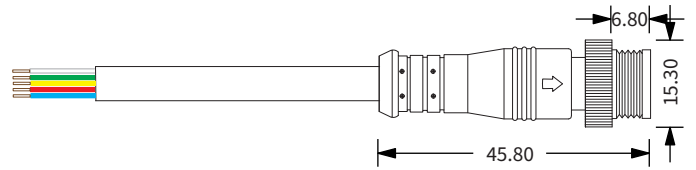
LFX-1717-VB-RGBW-DMX-PIXEL CHASING (Vertical Bending Version)



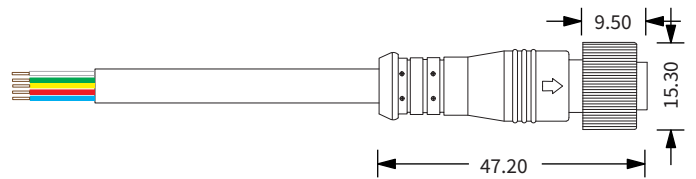
Waterproof Interrupter
YYZ-WP-I



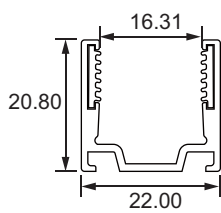
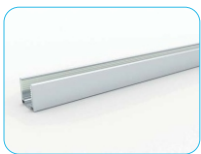
Male Connector
YYZ-5C-D6-MC



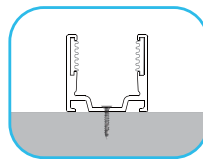
Female Connector
YYZ-5C-D6-FC



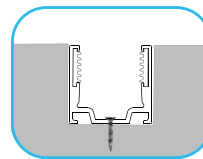
ALUMINIUM CHANNEL



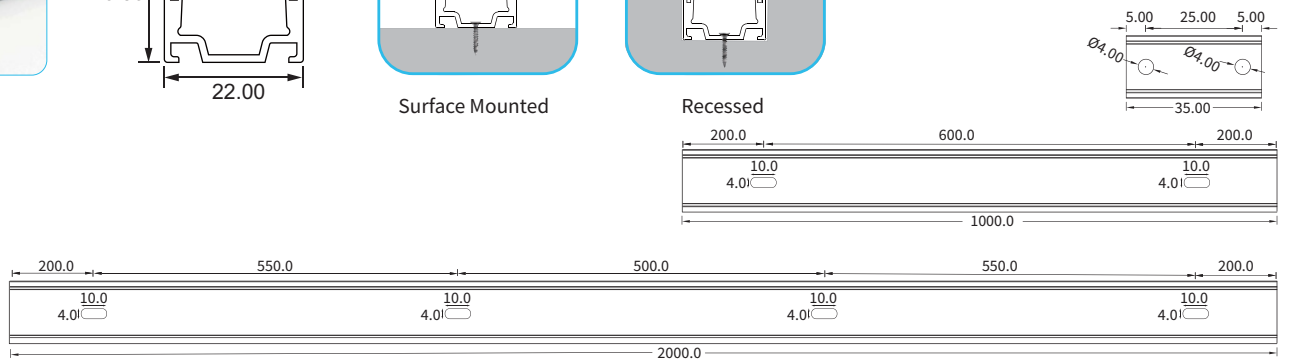
Installation Way



Surface Mounted



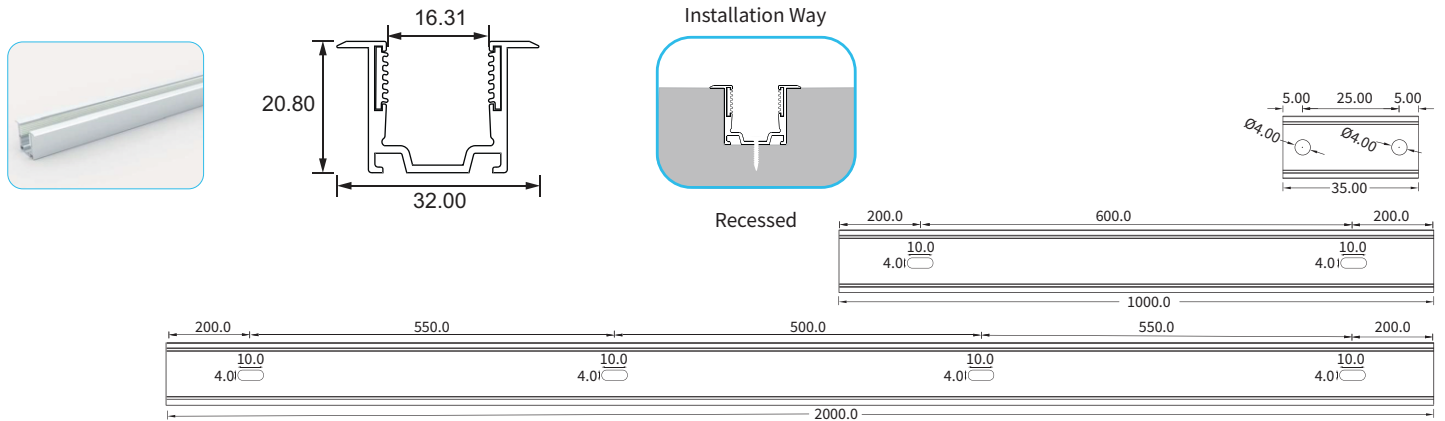
Recessed



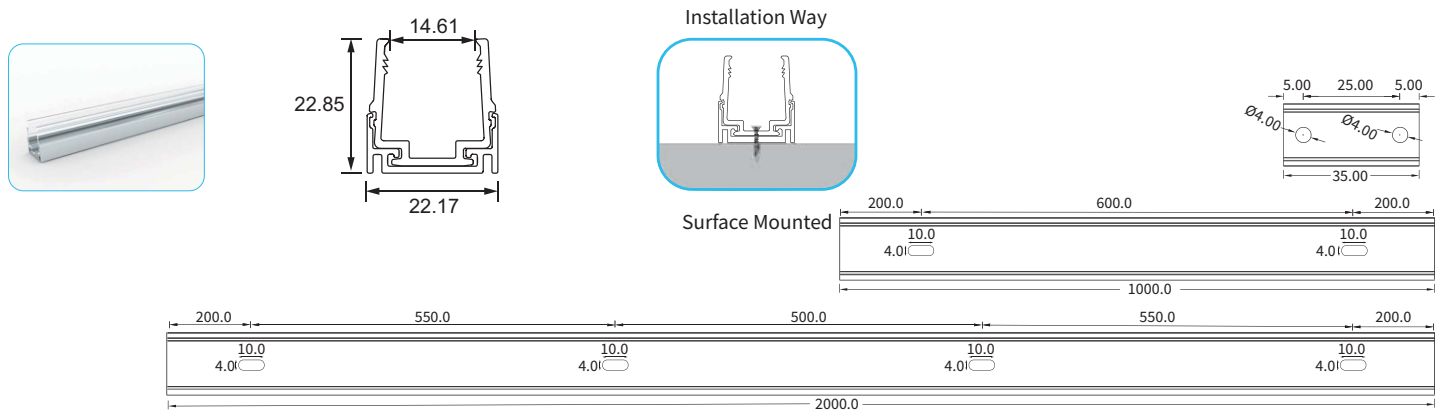
Model	W x H (mm)	Standard Length	Screw Holes	Holes Numbers
YYZ-AC-1-35-4-2-LFX-17-VB	22.00 x 20.80	35mm	Ø4.0mm	2
YYZ-AC-1-1000-4-2-LFX-17-VB		1000mm	4.0mm	2
YYZ-AC-1-2000-4-4-LFX-17-VB		2000mm	4.0mm	4

LFX NEON SERIES

LFX-1717-VB-RGBW-DMX-PIXEL CHASING (Vertical Bending Version)

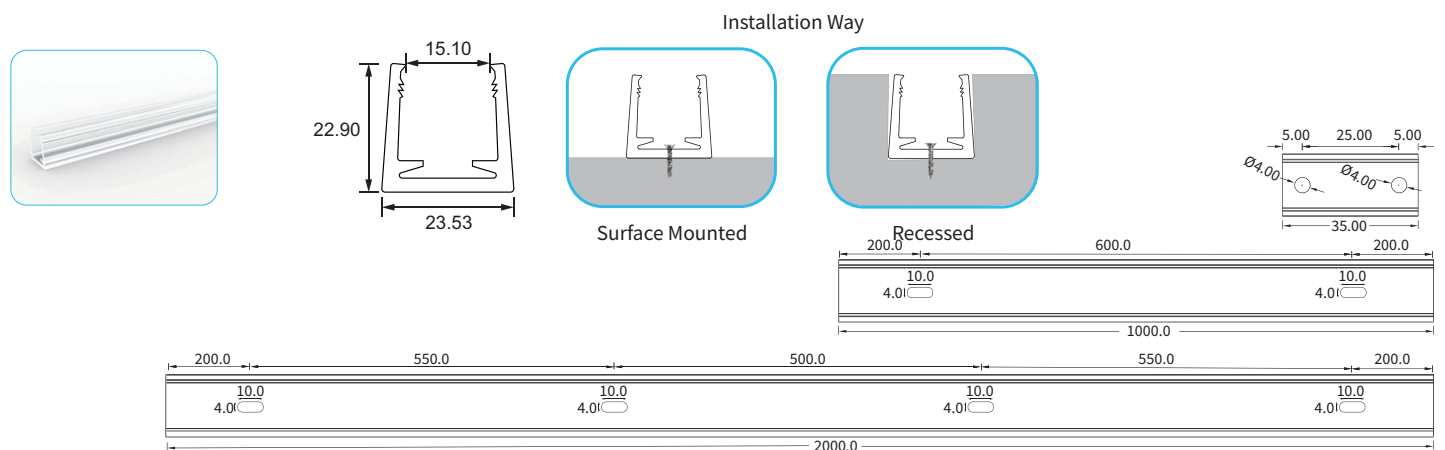


Model	W x H (mm)	Standard Length	Screw Holes	Holes Numbers
YYZ-AC-2-35-4-2-LFX-17-VB	22.00 x 22.80	35mm	Ø4.0mm	2
YYZ-AC-2-1000-4-2-LFX-17-VB		1000mm	4.0mm	2
YYZ-AC-2-2000-4-4-LFX-17-VB		2000mm	4.0mm	4



Model	W x H (mm)	Standard Length	Screw Holes	Holes Numbers
YYZ-AC-3-35-4-2-LFX-17-VB	22.17 x 22.85	35mm	Ø4.0mm	2
YYZ-AC-3-1000-4-2-LFX-17-VB		1000mm	4.0mm	2
YYZ-AC-3-2000-4-4-LFX-17-VB		2000mm	4.0mm	4

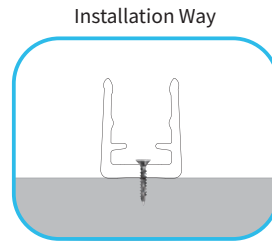
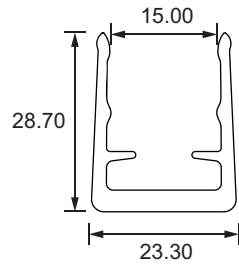
PLASTIC CHANNEL



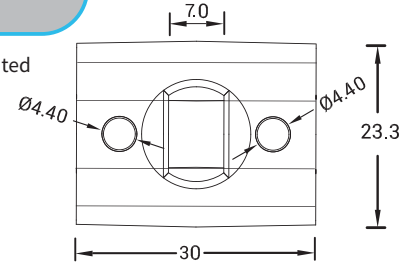
Model	W x H (mm)	Standard Length	Screw Holes	Holes Numbers
YYZ-PC-1000-4-2-LFX-17-VB	23.53 x 22.90	1000mm	Ø4.0mm	2

LFX NEON SERIES

LFX-1717-VB-RGBW-DMX-PIXEL CHASING (Vertical Bending Version)



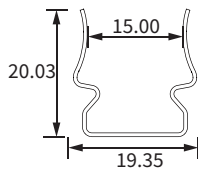
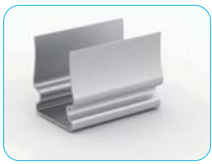
Installation Way



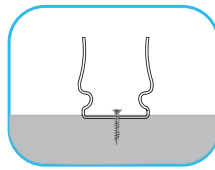
Surface Mounted

Model	W x H (mm)	Standard Length	Screw Holes	Holes Numbers
YYZ-PC-30-4.40-2-LFX-17-VB	23.30 x 28.70	30mm	Ø4.40mm	2

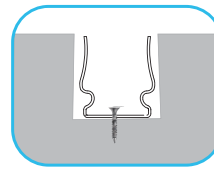
STAINLESS STEEL CHANNEL



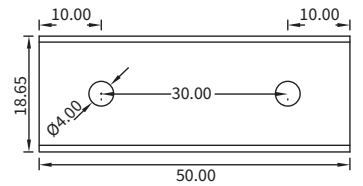
Installation Way



Surface Mounted

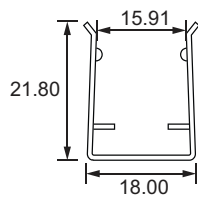
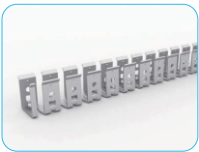


Recessed

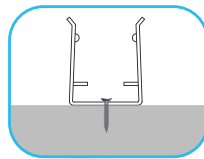


Model	W x H (mm)	Standard Length	Screw Holes	Holes Numbers
YYZ-SSC-50-4-2-LFX-17-VB	19.35 x 20.03	50mm	Ø4.0mm	2

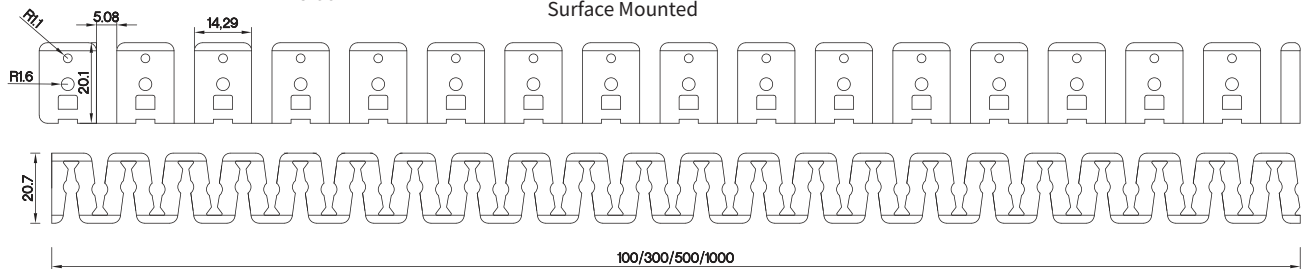
LINEAR FLEX CHANNEL



Installation Way



Surface Mounted



Model	W x H (mm)	Standard Length
YYZ -SSC-FLX-100-LFX-17-VB	18.00 x 21.80	100mm
YYZ -SSC-FLX-300-LFX-17-VB		300mm
YYZ -SSC-FLX-500-LFX-17-VB		500mm
YYZ -SSC-FLX-1000-LFX-17-VB		1000mm