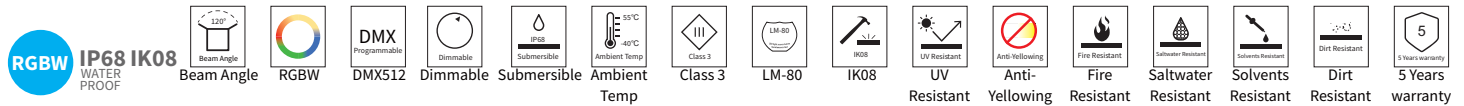


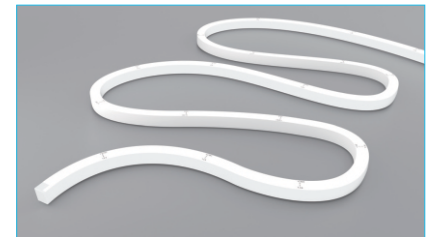
LFX NEON SERIES



LFX-1717-VB-RGBW (Vertical Bending Version)



YYZ LFX Neon series is designed to provide a very bright, crisp consistent and homogenized illumination that will accentuate any building, structure, or artistic flourish. Using high brightness surface mounted LEDs, behind a first class eco-friendly UV-resistant PVC encapsulated flexible chamber material, the LFX Neon will provide your project with bright, consistent traces of light in shades of White, single colors. The fixture consists of uniform and even lighting with no Led hotspot. LFX Neon has a transverse minimum radius of 150mm and is horizontal bendable. The product is supplied in 5m standard rolls-or custom as needed.



FEATURES

LIGHT SOURCE	Lumileds SMD LED 5050
WORKING VOLTAGE	DC 24V
RATED POWER	17W/m
LED QUANTITY	72 Leds / m
RADIANCE ANGLE	120°
LAMP LIFE	70,000 Hours L70@25°C 50,000 Hours L70@50°C
MOUNTING	Mounting clip / chanel
CONNECTION	Outdoor rated connections
CUTTING INCREMENTS	83.3mm
MINIMUM BEND DIAMETER	120mm
DIMENSIONS	16.5mm(W) x 16.5mm(H)
OPERATING TEMP	-40° C - +55° C
STORAGE TEMP	-20° C - +55° C
CONTINUOUS LENGTH	5mtr
WORKING MODE	DMX
IP RATING	IP68 Wet location submersible <2m



ELECTRICAL DATA

POWER CONSUMPTION	17W/m
SUPPLY VOLTAGE	DC 24 V
COLORS	RGBW (2700K, 3000K, 4000K, 5000K)

ORDERING LOGIC

PRODUCT	POWER	COLOR TEMPERATURE
LFX 1717-VB	17 - 17 W	1 - RGBW(2700K) 2 - RGBW(3000K) 3 - RGBW(4000K) 4 - RGBW(5000K)

Sample: LFX 1717-VB - 17 - 1

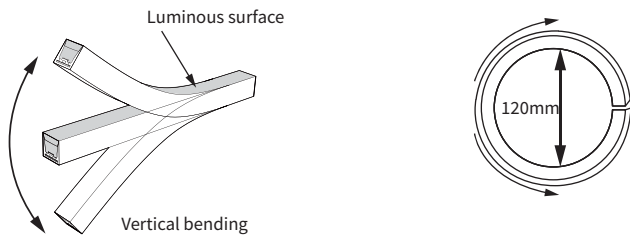
LUMEN CHART

Color	Lumen Output
Red (RE)	33lm/m
Green (GR)	127lm/m
Blue (BL)	20lm/m
RGBW (RGBW)	331lm/m
3000K (CT 30)	193lm/m

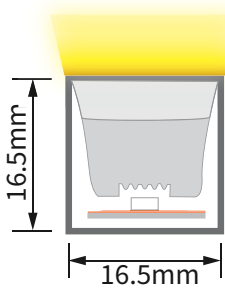
LFX NEON SERIES

LFX-1717-VB-RGBW (Vertical Bending Version)

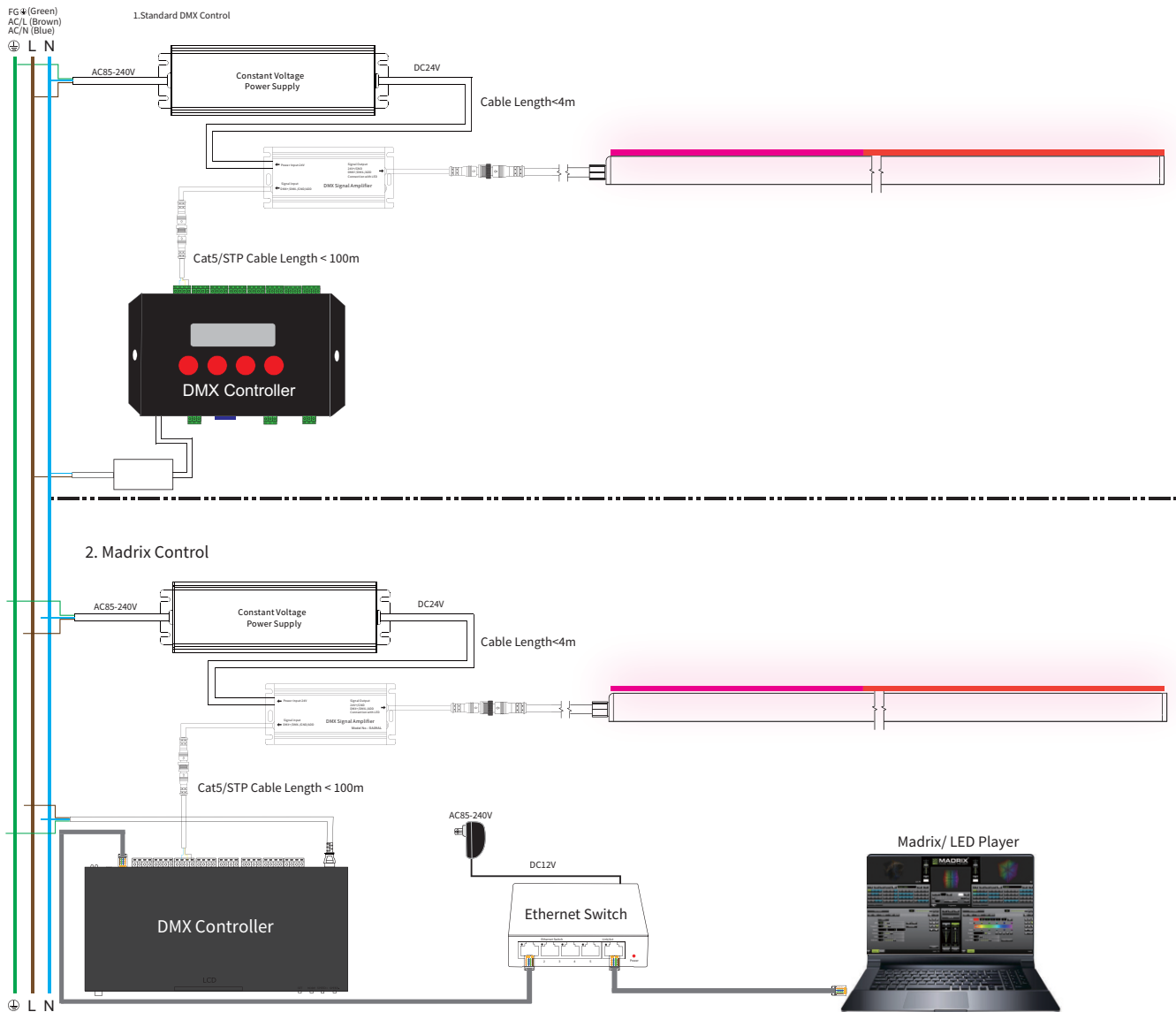
BENDING DETAILS



DIMENSION



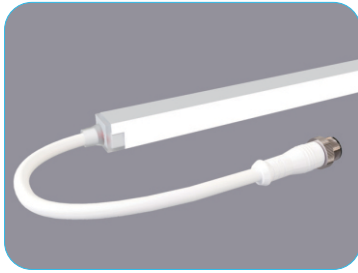
DMX PIXEL CHASING CONTROL WIRING DIAGRAM



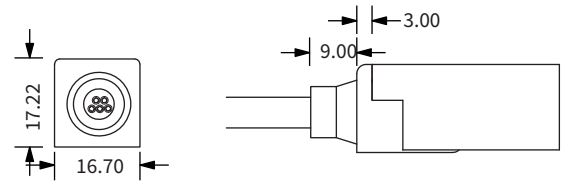
LFX NEON SERIES

LFX-1717-VB-RGBW (Vertical Bending Version)

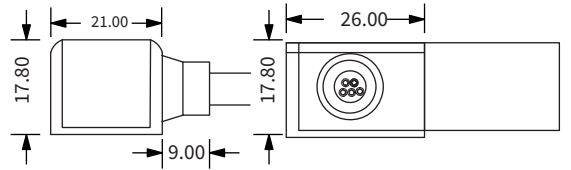
ACCESSORIES



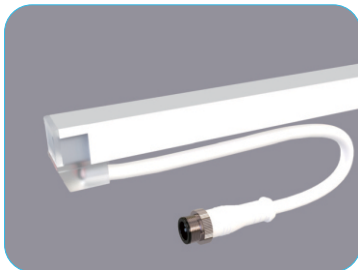
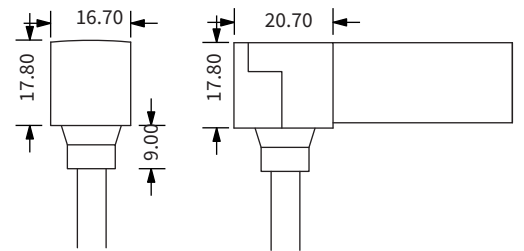
Direct Entry Connector
 YYZ-MIC-DEC-D5-01 (Single Feed-Right Side)
 YYZ-MIC-DEC-D5-02 (Single Feed-Left Side)
 YYZ-MIC-DEC-D5-03 (Double Feed-Both Side)



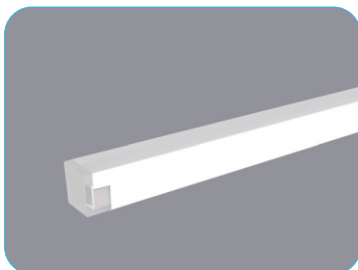
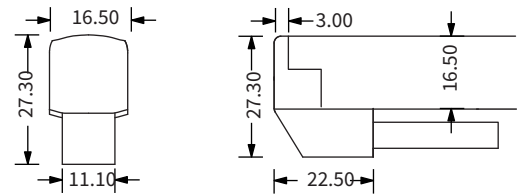
Side Entry Connector
 YYZ-MIC-SEC-D5-01 (Single Feed-Right Side)
 YYZ-MIC-SEC-D5-02 (Single Feed-Left Side)
 YYZ-MIC-SEC-D5-03 (Double Feed-Both Side)



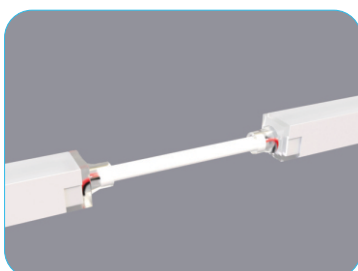
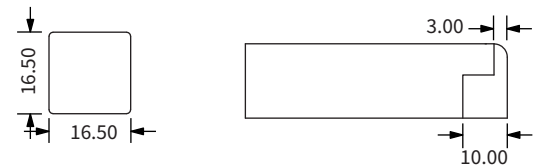
Bottom Entry Connector
 YYZ-MIC-BEC-D5-01 (Single Feed-Right Side)
 YYZ-MIC-BEC-D5-02 (Single Feed-Left Side)
 YYZ-MIC-BEC-D5-03 (Double Feed-Both Side)



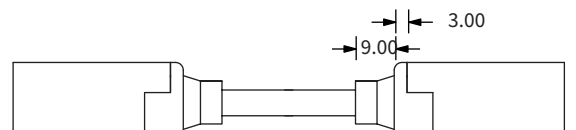
L Shape Entry Connector
 YYZ-MIC-LSEC-D5-01 (Single Feed-Right Side)
 YYZ-MIC-LSEC-D5-02 (Single Feed-Left Side)
 YYZ-MIC-LSEC-D5-03 (Double Feed-Both Side)



End Cap
 YYZ-EC

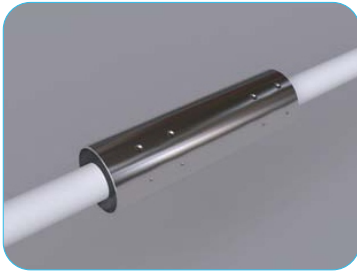


Jumper
 YYZ-JC

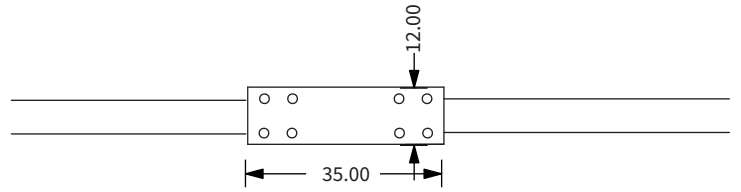


LFX NEON SERIES

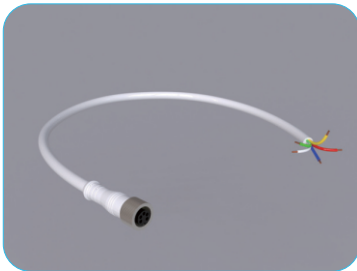
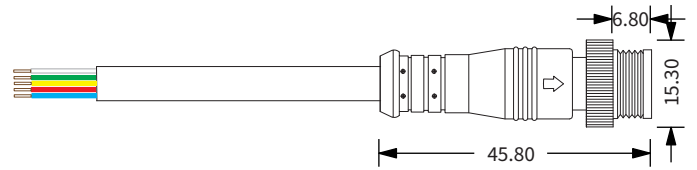
LFX-1717-VB-RGBW (Vertical Bending Version)



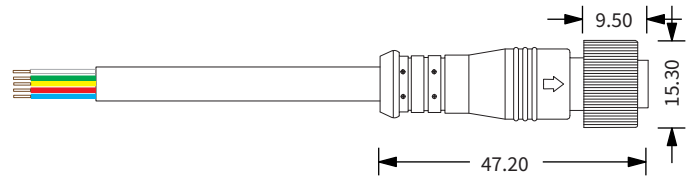
Waterproof Interrupter
YYZ-WP-I



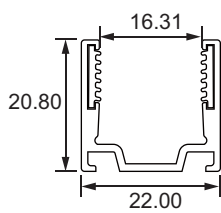
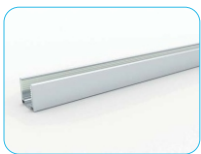
Male Connector
YYZ-5C-D6-MC



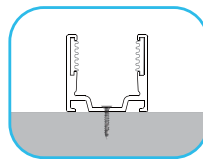
Female Connector
YYZ-5C-D6-FC



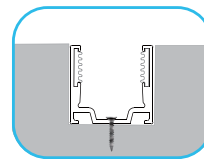
ALUMINIUM CHANNEL



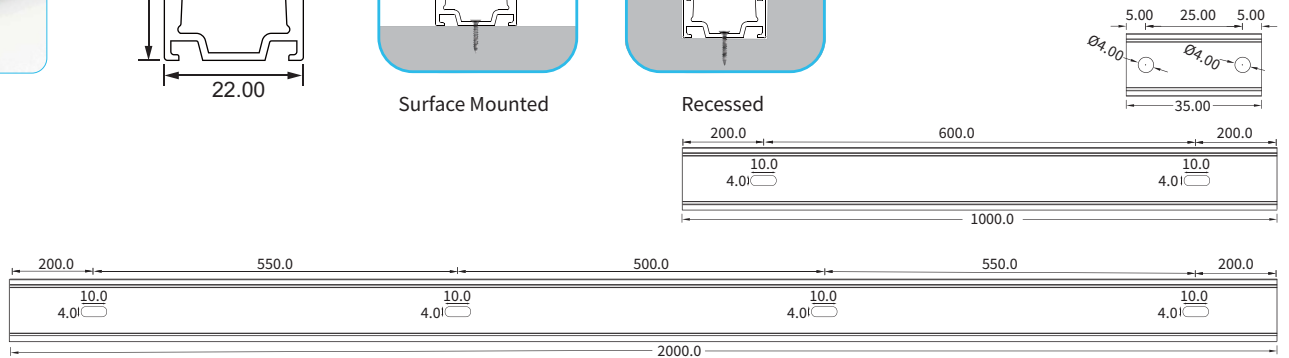
Installation Way



Surface Mounted



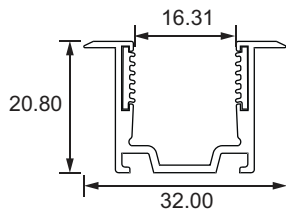
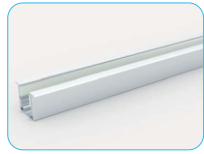
Recessed



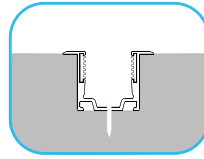
Model	W x H (mm)	Standard Length	Screw Holes	Holes Numbers
YYZ-AC-1-35-4-2-LFX-17-VB	22.00 x 20.80	35mm	Ø4.0mm	2
YYZ-AC-1-1000-4-2-LFX-17-VB		1000mm	4.0mm	2
YYZ-AC-1-2000-4-4-LFX-17-VB		2000mm	4.0mm	4

LFX NEON SERIES

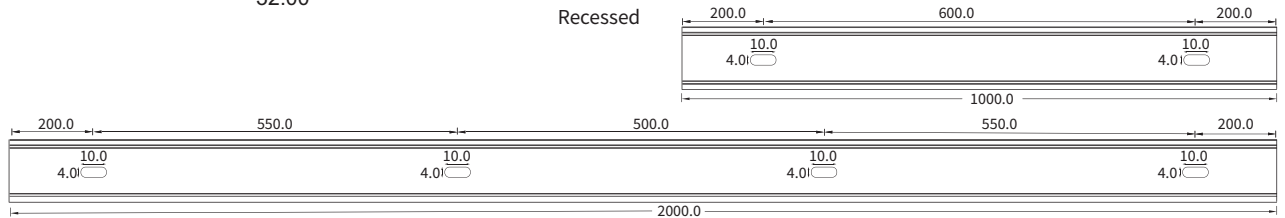
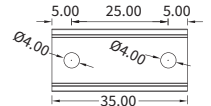
LFX-1717-VB-RGBW (Vertical Bending Version)



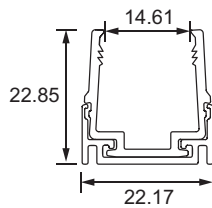
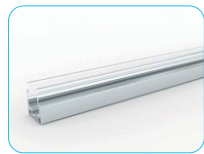
Installation Way



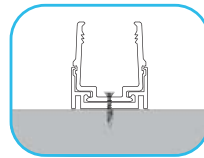
Recessed



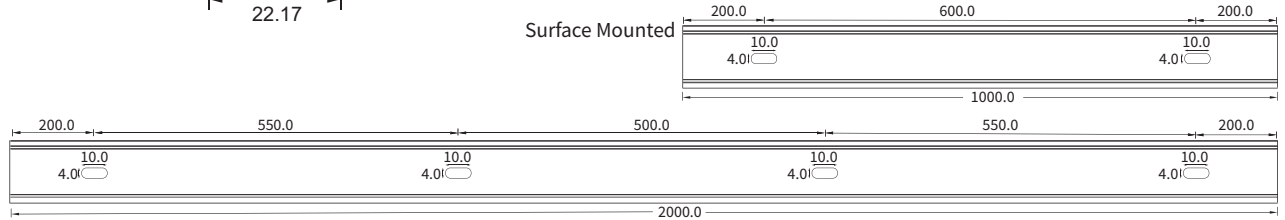
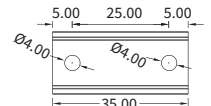
Model	W x H (mm)	Standard Length	Screw Holes	Holes Numbers
YYZ-AC-2-35-4-2-LFX-17-VB	22.00 x 22.80	35mm	Ø4.0mm	2
YYZ-AC-2-1000-4-2-LFX-17-VB		1000mm	4.0mm	2
YYZ-AC-2-2000-4-4-LFX-17-VB		2000mm	4.0mm	4



Installation Way

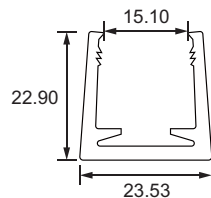


Surface Mounted

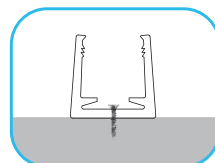


Model	W x H (mm)	Standard Length	Screw Holes	Holes Numbers
YYZ-AC-3-35-4-2-LFX-17-VB	22.17 x 22.85	35mm	Ø4.0mm	2
YYZ-AC-3-1000-4-2-LFX-17-VB		1000mm	4.0mm	2
YYZ-AC-3-2000-4-4-LFX-17-VB		2000mm	4.0mm	4

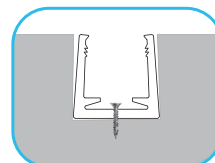
PLASTIC CHANNEL



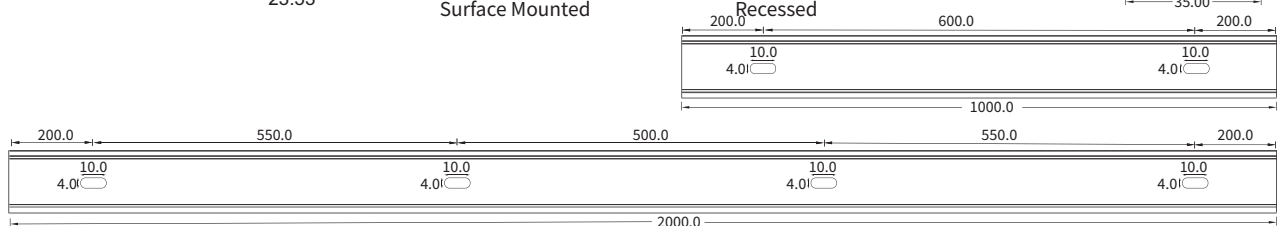
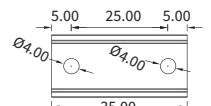
Installation Way



Surface Mounted



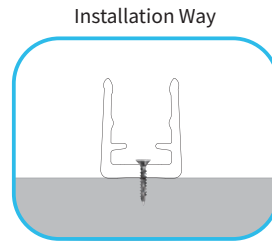
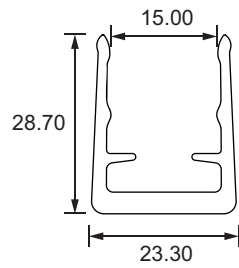
Recessed



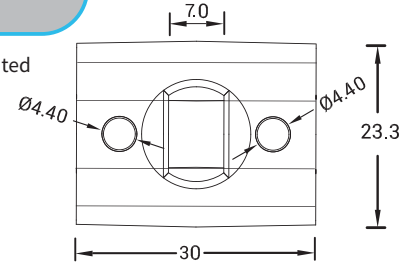
Model	W x H (mm)	Standard Length	Screw Holes	Holes Numbers
YYZ-PC-1000-4-2-LFX-17-VB	23.53 x 22.90	1000mm	Ø4.0mm	2

LFX NEON SERIES

LFX-1717-VB-RGBW (Vertical Bending Version)

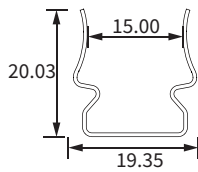
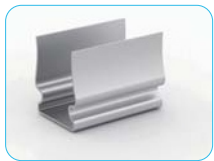


Surface Mounted

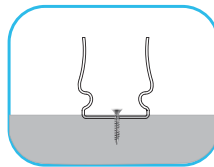


Model	W x H (mm)	Standard Length	Screw Holes	Holes Numbers
YYZ-PC-30-4.40-2-LFX-17-VB	23.30 x 28.70	30mm	Ø4.40mm	2

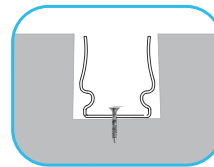
STAINLESS STEEL CHANNEL



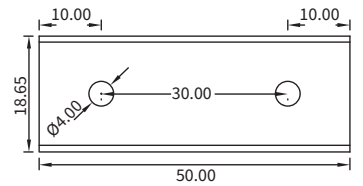
Installation Way



Surface Mounted

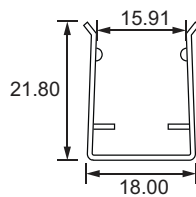
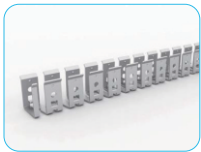


Recessed

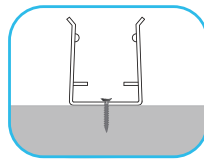


Model	W x H (mm)	Standard Length	Screw Holes	Holes Numbers
YYZ-SSC-50-4-2-LFX-17-VB	19.35 x 20.03	50mm	Ø4.0mm	2

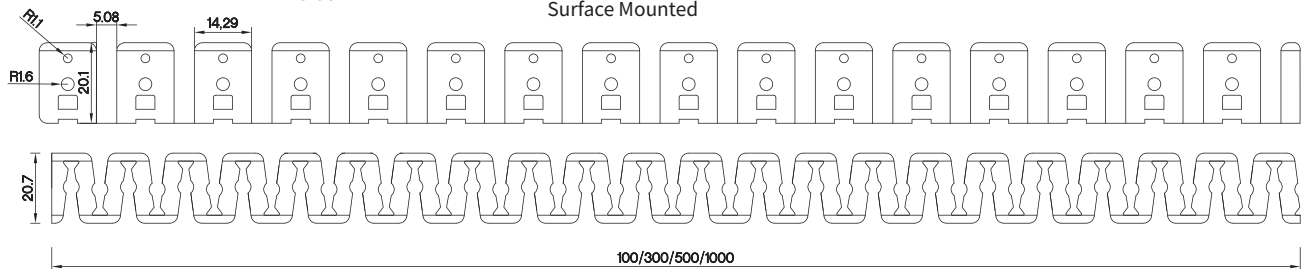
LINEAR FLEX CHANNEL



Installation Way



Surface Mounted



Model	W x H (mm)	Standard Length
YYZ -SSC-FLX-100-LFX-17-VB	18.00 x 21.80	100mm
YYZ -SSC-FLX-300-LFX-17-VB		300mm
YYZ -SSC-FLX-500-LFX-17-VB		500mm
YYZ -SSC-FLX-1000-LFX-17-VB		1000mm