

# LINEAR FIXTURE DIFFUSED SPEC SHEET



LFD-12



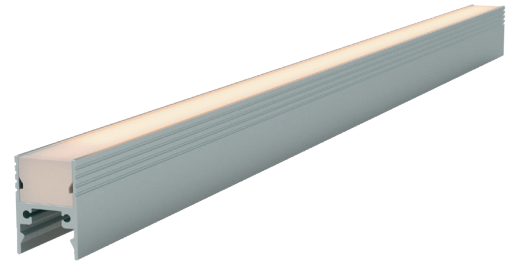
**IP67**  
WATER  
PROOF



**12W**

Pending

The LFD series linear LED light fixtures are a simple, yet elegant solution for slick wall washing applications where a diffused single color light is desired along a floor, wall or ceiling. The LFD series in particular has the mounting bracket hidden behind the fixture to give it a clean, look unobtrusive.



## FEATURES

<b>OPERATING VOLTAGE</b>	24 Volts DC
<b>OPERATING TEMPERATURE</b>	-20°C to 60°C
<b>LIGHT SOURCE</b>	COB strip
<b>LED QUANTITY</b>	400 LED/m
<b>FINISH</b>	White
<b>LAMP LIFE</b>	50,000 hrs
<b>IP RATING</b>	IP67
<b>MAXIMUM DISTANCE</b>	16.4 ft (5 m)
<b>COLORS</b>	2700K, 3000K, 4000K, 6500K, Blue, Green
<b>CONNECTION</b>	IP Rated Connector

**V 24 VDC**  
Operating Voltage

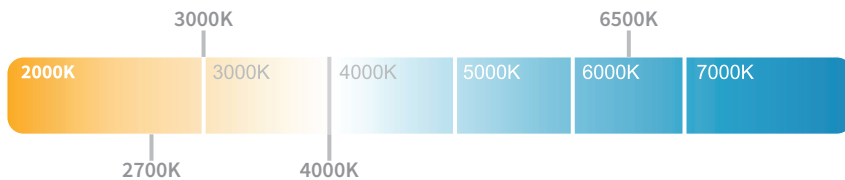
**W 12 W/m**  
Rated Power

## ELECTRICAL

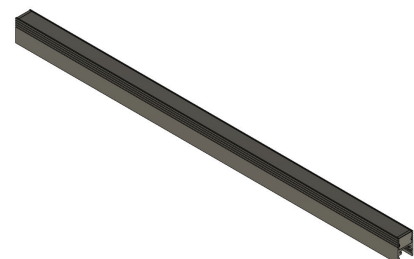
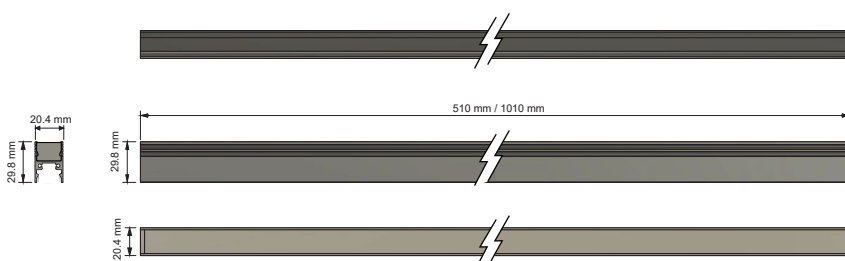
<b>POWER</b>	12 W/m
<b>SUPPLY VOLTAGE</b>	24 VDC
<b>LUMEN (3000K)</b>	602 lm/m (183 lm/ft)
<b>RATED POWER</b>	12 W/m (3.65 W/ft)
<b>CRI</b>	90

## COLOR

Color	Lumens/m	Lumens/ft
2700K	520 lm	158 lm
3000K	602 lm	183 lm
4000K	665 lm	203 lm
6500K	662 lm	202 lm
Blue	150 lm	46 lm
Green	668 lm	203 lm



## DIMENSIONS



# LINEAR FIXTURE DIFFUSED SPEC SHEET

LFD-12

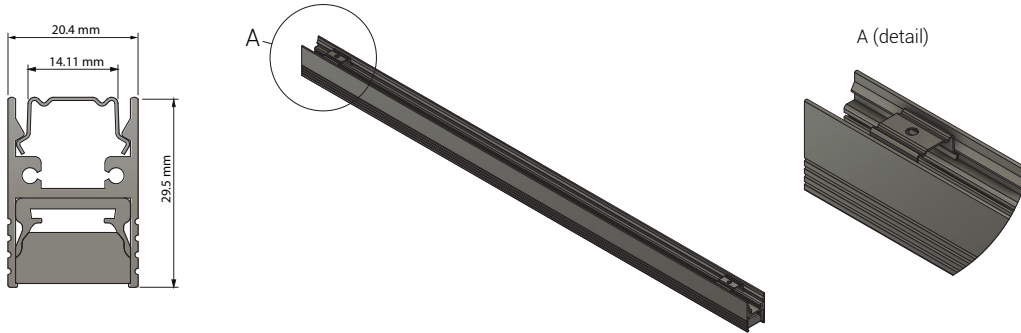
## ORDERING CODE

PRODUCT SERIES	TYPE	POWER	COLOR TEMPERATURE	LENGTH	MOUNTING	CONNECTOR
LFD	O - OUTDOOR	12W - 12 WATTS	CT27 - 2700K	500 - 510 mm / 20 in	MC - MOUNTING CLIP	IP - IP CONNECTOR
			CT30 - 3000K	1000 - 1010 mm / 40 in	WM - WALL MOUNT	
			CT40 - 4000K	xxx - Custom		
			CT65 - 6500K			
			BL - Blue			
			GR - Green			

Sample: LFD-O-12W-CT30-500-MC-IP

## MOUNTING OPTIONS

### Mounting Clip



### Wall Mount

