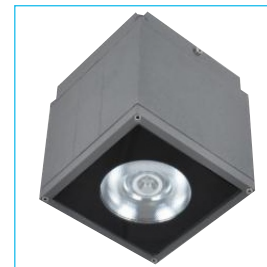


SAVANNA SQUARE SERIES

SVN-SQ-F




Mono IP65 CE

YYZ Savanna square is square surface mounted downlight which are very compact and shallow in design. Die-cast aluminium body, with stainless steel fasteners and high efficiency PMMA lens & Tempered glass cover.



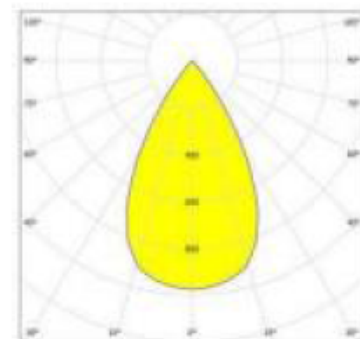
FEATURES

MATERIAL	Die-cast aluminum
WORKING VOLTAGE	100-240V AC
RATED POWER	27W, 30W
BEAM ANGLE	12°, 24°, 36°
LAMP LIFE	50,000 hrs
MOUNTING	Surface mounted
DIMENSIONS	145 x 145 x 150mm
OPERATION TEMP	-20° C - +50° C
CONTROL	On/Off
BODY COLOR	White, Grey, Black, custom

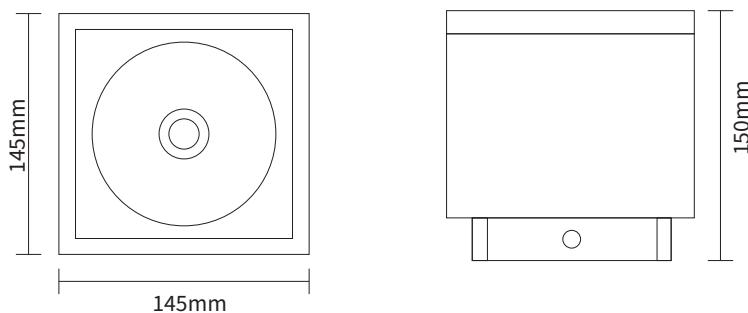
-  PHILIPS/EPISTAR/NICHIA/CREE/
SAMSUNG/LUMILEDS/OSRAM
LED Quality
-  240V AC
Working Voltage
-  27W/30W
Rated power

ELECTRICAL DATA

POWER CONSUMPTION	27W/30W
SUPPLY VOLTAGE	100-240V ac
COLORS	2700K, 3000K, 4000K, 6500K
CRI	90
LUMEN	95lm/W



DIMENSIONS



ORDERING LOGIC

PRODUCT	WATTAGE	COLOR TEMPERATURE	BEAM ANGLE	FINISH	CUSTOM
SVN-SQ-F	27 - 27W	(CT27) 2700K	12 - 12°	WH - White	XX - XX
	30 - 30W	(CT30) 3000K	24 - 24°	GR - Grey	
		(CT40) 4000K	36 - 36°	BK - Black	
		(CT65) 6500K		XX - Custom	

Sample: SVN-SQ-F -27-CT27-12-WH-XX