

APERTURE-40-TRIMLESS

APR40

Mono IP67 CE

YYZ Aperture 40 is a surface mounted light made of extruded architectural grade T6061 aluminium. It is equipped with high power LED light source and optical lens with a wide range of color temperature which provide superior color consistency and high CRI. This linear LED luminaire is designed to produce a uniform distribution of diffused light and is suitable for ceiling and wall.



FEATURES

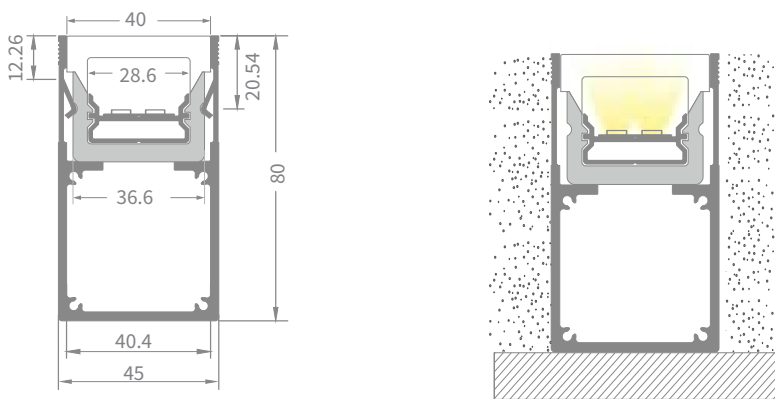
HOUSING	Extruded architectural grade T6061 aluminium
BEAM ANGLE	120°
MOUNTING	Surface mounting
OPTIC	PMMA Milky
DIMENSIONS	45x80mm
OPERATION TEMP	-20° C - +50° C
LAMP LIFE	50,000 hrs
AVAILABLE LENGTH	1000mm, 2000mm
CONTROL	On/Off, Dali, 1-10V
LUMEN	900lm@3000K

CREE/SAMSUNG
LED Quality

24V DC
Working Voltage

9.6W/mtr
Rated power

DIMENSION



ORDERING LOGIC

PRODUCT	WATTAGE	COLOR TEMPERATURE	DRIVER	FIXTURE LENGTH	FINISH	
APR40	9.6 - 9.6W/Mtr	(CT27)	2700K	SW - ON-OFF	100 - 1000mm	AL - Aluminium natural
		(CT30)	3000K	AN - 0-10V	200 - 2000mm	XX - Custom
		(CT35)	3500K	DA - DALI	XX - Custom	
		(CT40)	4000K			
		(CT50)	5000K			

Sample: APR40 - 9.6 - CT27 - SW - 100 - AL