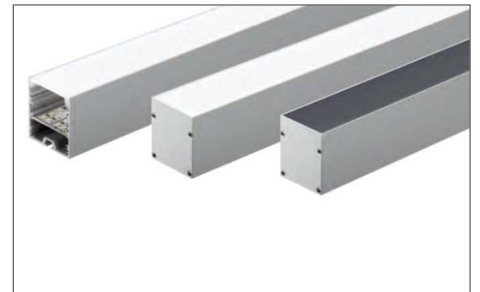


APERTURE-24-TRIMLESS

APR24

Mono IP20/IP54 **CE**

YYZ Aperture 24 is a surface, mounted or suspended mounting surface light made of extruded architectural grade T6061 aluminum. It is equipped with high power LED light source and optical lens with a wide range of color temperature which provide superior color consistency and high CRI. This linear LED luminaire is designed to produce a uniform distribution of diffused light and is suitable for ceiling and wall.



FEATURES

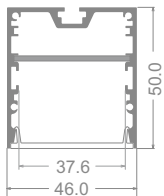
HOUSING	Extruded architectural grade t6061 aluminium
BEAM ANGLE	120°
MOUNTING	Surface mounting, Suspended
OPTIC	PMMA Milky, PMMA Black
DIMENSIONS	46x50mm
OPERATION TEMP	-20° C - +50° C
LAMP LIFE	50,000 hrs
AVAILABLE LENGTH	1000mm, 2000mm
CONTROL	On/Off, Dali, 1-10V
LUMEN	95lm/W

CREE/SAMSUNG
LED Quality

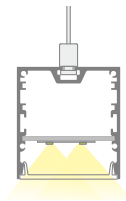
24V DC
Working Voltage

24W/mtr
Rated power

DIMENSION



APR24 -SM (Surface mounting)



APR24-SP (Suspended)

ORDERING LOGIC

PRODUCT	WATTAGE	COLOR TEMPERATURE	DRIVER	FIXTURE LENGTH	FINISH
APR24-SM-TRL	24 - 24W/Mtr	(CT27) 2700K	SW - ON-OFF	100 - 1000mm	AL - Aluminium natural
APR24-SP-TRL		(CT30) 3000K	AN - 0-10V	200 - 2000mm	XX - Custom
		(CT35) 3500K	DA - DALI	XX - Custom	
		(CT40) 4000K	DM - DMX		
		(CT50) 5000K			

Sample: APR24-SM-TRL - 24 - CT27 - SW - 100 - AL