

INDOOR LED STRIP DIM2 WARM FLEX SERIES

LFX-I-23.00-CTWD-1828-Z9-168-24-CV-10-H-1-HT-R-M-T-L-W-L05



Our LFX series flexible linear LED light strips is a simple, effective solution for a wide range of lighting applications where crisp, single color light is desired. Ideal for indirect accent lighting, as well as a store fixtures, display cases, steps and stairwells, furniture, kitchen and cabinet lighting, along with other task and specialty applications.

FEATURES

LIGHT SOURCE	1828 LED
LED QUANTITY	168 LEDS / m
FINISH	WHITE PCB
WORKING VOLTAGE	24 V DC
RATED CURRENT	200mA
RATED POWER	23W / m
RADIANCE ANGLE	120°
LAMP LIFE	50000 HRS
MOUNTING	3M TAPE ON THE BACK
CONNECTION	HARDWIRED TAILS
CUTTING INCREMENTS	EVERY 83.33 mm
DIMENSIONS	10mm X 5000mm(PCB)
MAX DAISY RUN	5 m

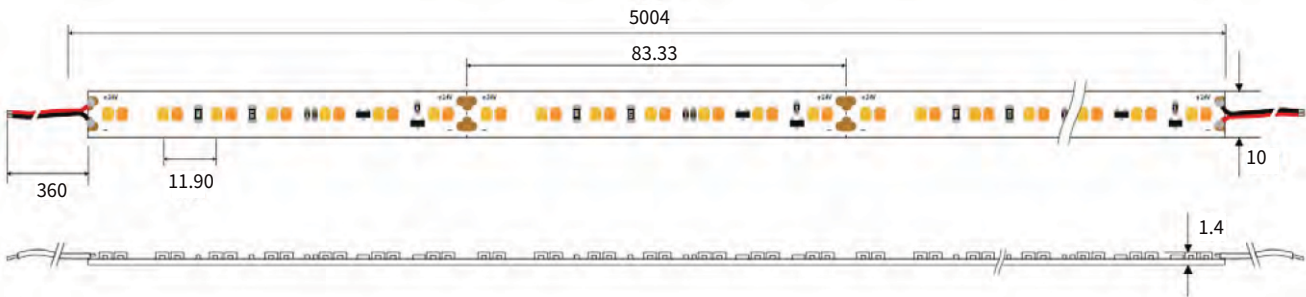


- CREE**
LED Quality
- 24V DC**
Working Voltage
- 23W / m**
Rated power
- 3M Tape on the back**
Mounting

ELECTRICAL DATA

POWER CONSUMPTION	23W
SUPPLY VOLTAGE	24 V DC
SUPPLY CURRENT	200mA
COLORS	1800-3000K
LEDS / 3.3FT	168

DIMENSIONS



ORDERING LOGIC

PRODUCT SERIES	TYPE	POWER	COLOR TEMPERATURE	LED TYPE	BIN	NO. OF LED	VOLTAGE	CIRCUIT	WIDTH	CRI	NO OF LED ROWS	CONNECTION												
LFX	I - Indoor (IP20)	23 - 23W	(CTWD) 1800-3000K	1828	Z9	168 - 168 LEDs/mtr	24-24V	CV-Constant voltage	10 - 10mm	H - High (90)	1	HT - Hardwired Tail IC - Indoor Connector												
<table border="1"> <thead> <tr> <th>MODEL</th> <th>COLOR CONTROL</th> <th>LIGHT EMITTING DIRECTION</th> <th>LED POWER</th> <th>PCB COLOR</th> <th>LENGTH PER REEL</th> </tr> </thead> <tbody> <tr> <td>R - Regular</td> <td>M - Mono</td> <td>T - Top</td> <td>L - Low</td> <td>W - White</td> <td>L05 - 5mtr</td> </tr> </tbody> </table>													MODEL	COLOR CONTROL	LIGHT EMITTING DIRECTION	LED POWER	PCB COLOR	LENGTH PER REEL	R - Regular	M - Mono	T - Top	L - Low	W - White	L05 - 5mtr
MODEL	COLOR CONTROL	LIGHT EMITTING DIRECTION	LED POWER	PCB COLOR	LENGTH PER REEL																			
R - Regular	M - Mono	T - Top	L - Low	W - White	L05 - 5mtr																			
Sample: LFX-I-23-CTWD-1828-Z9-168-24-CV-10-H-1-HT-R-M-T-L-W-L05																								