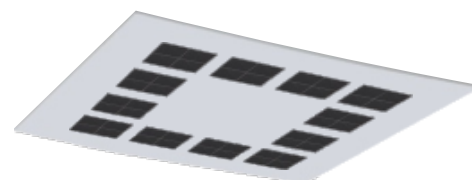


IRIS RECESSED SQUARE

IRS-RS

Mono IP20 CE

YYZ Iris is a direct LED luminaire with wide range of modular optic within a single fixture that can be combined to produce different light distribution to appeal diverse architectural illumination requirements. It is with artistic design, wide beam UGR<19 and is applicable in areas like buildings, office, shopping mall and educational lighting.



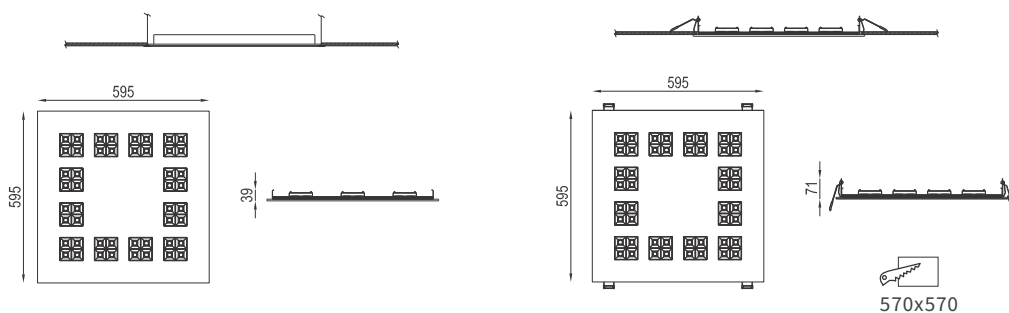
FEATURES

FINISH	BLACK, WHITE, GREY
WORKING VOLTAGE	220-240V 50/60Hz
RATED POWER	28/36/44W
DISTRIBUTION	WIDE
LAMP LIFE	50,000 HRS
MOUNTING	CEILING RECESSED
DIMENSIONS	595x595x39, 71mm
OPERATING TEMP	-20° C - +50° C
CONTROL	ON/OFF, 1-10V, DALI

ELECTRICAL DATA

POWER CONSUMPTION	28/36/44W
SUPPLY VOLTAGE	220-240VAC
COLORS	3000K, 4000K, 5000K
CRI	80+
LUMEN	95lm/W

DIMENSIONS



ORDERING LOGIC

PRODUCT	WATTAGE	COLOR TEMPERATURE	CONTROL	VOLTAGE	OPTIC	FINISH	CUSTOM		
IRS-RS	28 - 28W	(CT30)	3000K	ON/OFF	240VAC	W - White	Wide	BK - Black	xx
	36 - 36W	(CT40)	4000K	1-10V				WH - White	
	44 - 44W	(CT50)	5000K	DALI				GR - Grey	

Sample: IRS-RS - 28 - CT30 - ON/OFF - 240 - W - BK - XX