

CHAMAELEO HOTEL SERIES

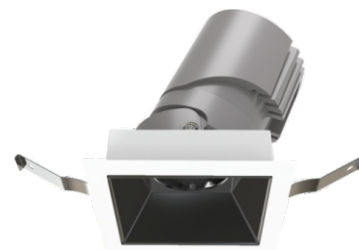
CMO HO

Mono IP20, 44 C E

YYZ Chamaeleo Hotel series is not only an aesthetic designed downlight, but also release high quality light thanks to combination of a precision light beam lens and secondary reflector. The luminaires blend elegantly into the ceiling layout and embody the philosophy of "light instead of luminaires." Super modular design, round as well as square with adjustable and fixed options. In various wattages, YYZ Chamaeleo Hotel series is a great choice you get a unified impression in one environment.

FEATURES

LED QUANTITY	1 Led
FINISH	White
WORKING CURRENT	500mA (20W), 600mA (25W)
RATED POWER	20/25W
RADIANCE ANGLE	15°, 24°, 38°, 55°
LAMP LIFE	50,000 hrs
MOUNTING	Ceiling recessed
CONNECTION	Indoor rated connections
DIMENSIONS	112 x 112 x 136mm
OPERATION TEMP	-20° C - +50° C
CONTROL	On/Off, Phase, 1-10V, Dali

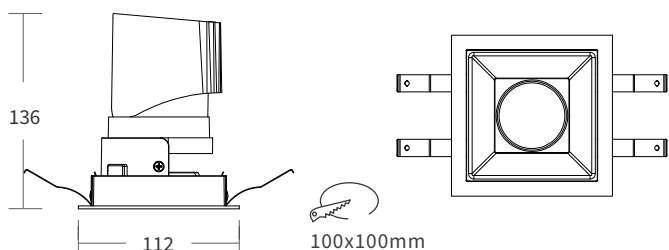


- CREE LED Quality
- 240 V AC Working Voltage
- 20/25W Rated power

ELECTRICAL DATA

POWER CONSUMPTION	20/25W
SUPPLY VOLTAGE	220-240V ac
COLORS	2700K, 3000K, 4000K
CRI	80, 90
LUMEN	80lm/W

DIMENSIONS



CMO HO-SQ01

ORDERING LOGIC

PRODUCT	WATTAGE	COLOR TEMPERATURE	CONTROL	CURRENT	BEAM ANGLE	CRI	FINISH	ACCESSORY	CUSTOM	
CMO HO-SQ01	20 - 20W	(CT27)	2700K	ND - ON/OFF	500 - 500mA(20W)	15 - 15°	80 - 80	WH - White	HC - Honey Comb	xx
	25 - 25W	(CT30)	3000K	PH - PHASE	600 - 600mA(25W)	24 - 24°	90 - 90		SL - Soft Lens	
		(CT40)	4000K	AN - 1-10V		38 - 38°				
		DA - DALI	55 - 55°							

Sample: CMO HO-SQ01 -20-CT27 - ND - 500 - 15 - 80 - WH - HC - XX

