

VERTEX FLEX-Y15S-HB RGB-24V



Looking for a bright, crisp and cost effective delineation lighting? YYZ's Vertex Flex-Y15S-HB- RGB series is it. Our product is designed to provide a very bright, crisp consistent and homogenized illumination that will accentuate any building, structure or artistic flourish.

Using 60 high brightness surface mounted LEDs/meter, behind a first class eco-friendly UV-resistant PVC encapsulated flexible chamber material, the Vertex Flex will provide your project with bright, consistent traces of light in 10 shades of White, single colors of Red, Green and Blue.

The fixture consists of uniform and even lighting with no Led hotspot. Vertex Flex-Y15S-HB-RGB has a transverse minimum diameter of 12cm. Easy to be installed, can be cut and re connected with IP68 protected connector.

The product is supplied in 7m standard rolls-or custom as needed. Connectors at both ends offer ease of installation. Operating at 24V, the Vertex Flex features on-board constant-current drive topology, which ensures consistent brightness along the entire run, precise drive current, and long life expectancy. Dimming is achieved with YYZ's dimming compatible power supplies. Two power levels and two control types are available.



FEATURES

LED QUANTITY	56 LED/MTR(RGB) ,60LED/MTR(RGBW)
FINISH	SILICON ENCAPSULATED FLEXIBLE CHAMBER MATERIAL
WORKING VOLTAGE	24 VOLTS
RATED POWER	12W/MTR ,15W/MTR
RADIANCE ANGLE	120°
LAMP LIFE	50000 HRS
MOUNTING	MOUNTING CLIP / CHANNEL
CONNECTION	OUTDOOR RATED CONNECTORS
CUTTING INCREMENTS	166.7mm (1 Unit)(12W/MTR) ,166.7mm(1 Unit)(15W/MTR)
DIMENSIONS	21(H) x 11.5(W)
OPERATION TEMP	-20° C - +50° C
STORAGE TEMP	-20° C - +60° C
WEIGHT	0.325 KG/MTR
CONTINUOUS LENGTH	15MTR(12W/MTR) ,10MTR(15W/MTR)

60 LEDs / mtr(15W/mtr)
LED Quality

24 VOLTS
Working Voltage

12W / 15W / mtr
Rated power

ELECTRICAL DATA

POWER CONSUMPTION	12W/MTR(RGB) ,15W/MTR(RGBW)
SUPPLY VOLTAGE	24 VOLTS
COLORS	RGB/RGBW
CRI	80+
1 PIXEL	10 LEDS

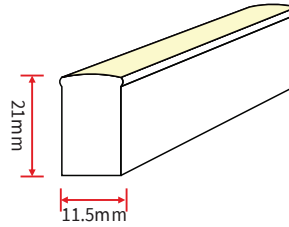
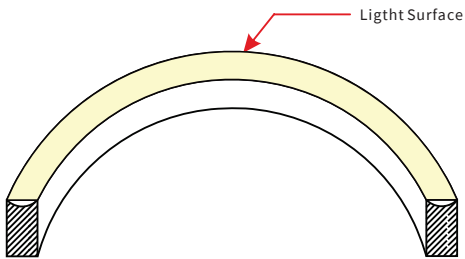
ORDERING LOGIC

PRODUCT	CONTROL	COLOR TEMPARTURE	VOLTAGE	FIXTURE LENGTH	MOUNTING	CONNECTION	CUSTOM
VERTEX FLEX Y15S - HB- (VTF Y15S-HB)	DMX - DMX CONTROL	(CT RGB) RGB (CT RGBW) RGBW	24 (24 VDC)	15Mtr (12W/M) 10Mtr (15W/M) (####) CUSTOM	CLP - Clip CHL - Chanel	OC - Outdoor Connector	xx

(Order Extrusion and End cap as per site requirement)

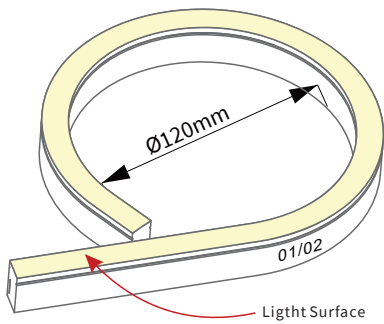
Sample: VTF Y15S-HB - DMX - CT RGB - 24 - 7 - CLP - OC - XX

DIMENSION

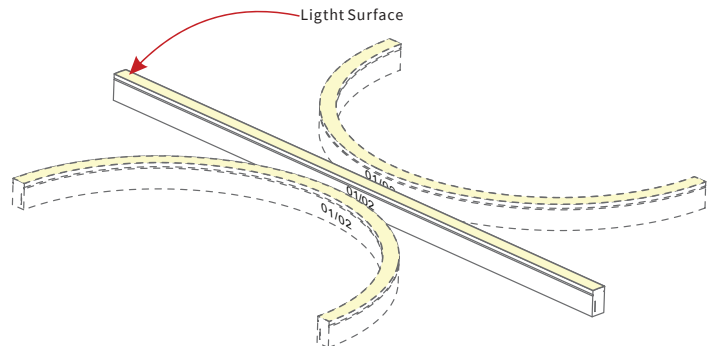


Note: Unless otherwise stated, the tolerance of the light is $\pm 0.3\text{mm}$.

BENDING DETAILS



The Light can only bent laterally (opposite bend along to light surface).



Do not bend smaller than allowed minimum bend diameter.

TYPES OF CONNECTOR

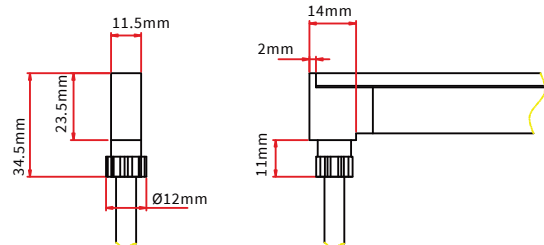
INJECTION-MOULDED CONNECTOR

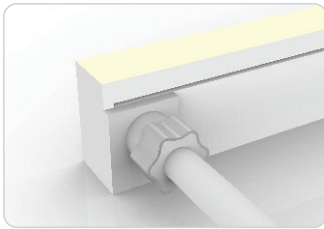
Note:
1. Unless otherwise stated, the tolerance of the connector is $\pm 0.5\text{mm}$.
2. Continuous length up to 7m by powering one end.



INJECTION-MOULDED FRONT CONNECTOR (BOTTOM)

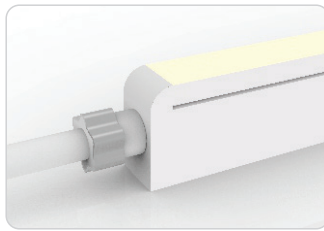
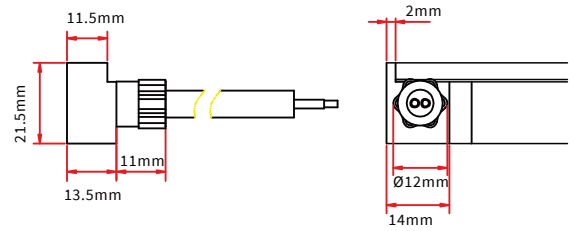
Connects light to power supply with pre-installed bottom feed cable IP67. Available in 0.3m, 1m, 3m, 5m, 10m, 15m, 20m lengths.





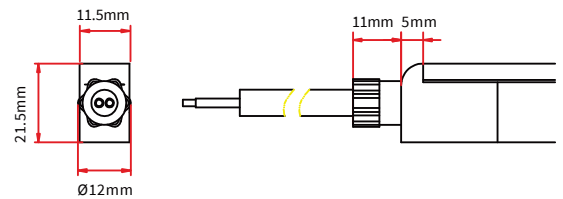
INJECTION-MOULDED FRONT CONNECTOR (SIDE)

Connects light to power supply with pre-installed side feed cable, IP67. Cable length available in 0.3m, 1m, 3m, 5m, 10m, 15m, 20m.



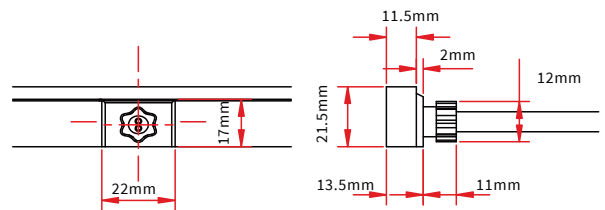
INJECTION-MOULDED FRONT CONNECTOR (TOP END)

Connects light to power supply with pre-installed end feed cable, IP67. Cable length available in 0.3m, 1m, 3m, 5m, 10m, 15m, 20m.



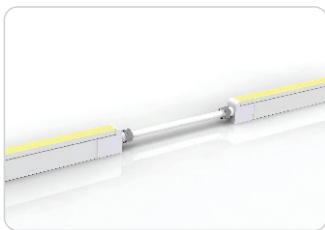
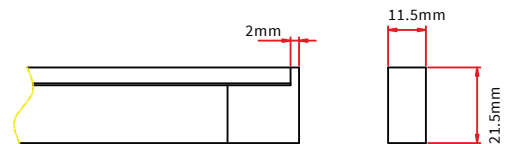
INJECTION-MOULDED MIDDLE FEED CONNECTOR

Connects light to power supply with pre-installed end feed cable, IP67. Cable length available in 0.3m, 1m, 3m, 5m, 10m, 15m, 20m.



INJECTION-MOULDED END CAP

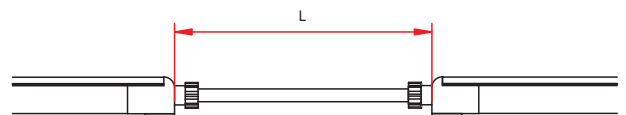
Pre-installed termination protection of the light, IP67.



INJECTION-MOULDED JUMPER

Connects two pieces of lights together with a flexible cable. IP67 Injection-moulded connector. L available in 0.3-1m.

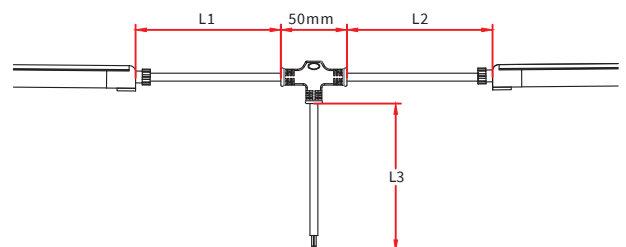
Maximum 8 Jumpers in 20m
Maximum 4 Jumpers in 10m



INJECTION-MOULDED T-FEED

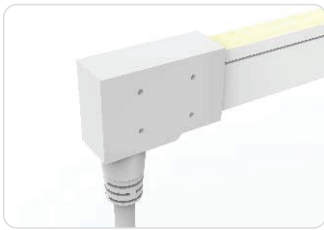
Connects two pieces of lights together with a T joint, energized from middle. IP67 Injection-moulded connector. L1 and L2 available in 0.15-0.5m. L3 available in 0.3-3m.

Maximum 8 T-feeds in 20m
Maximum 4 T-feeds in 10m



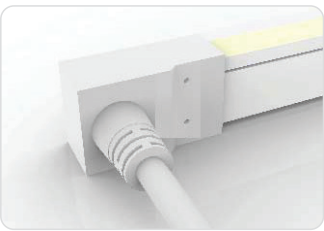
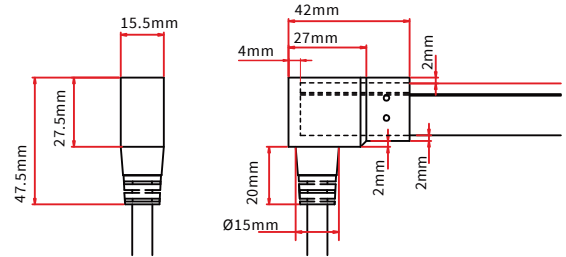
DUAL INJECTION-MOULDED CONNECTOR

Note:
 1. Unless otherwise stated, the tolerance of the connector is $\pm 0.5\text{mm}$.
 2. Continuous length up to 7m by powering one end.



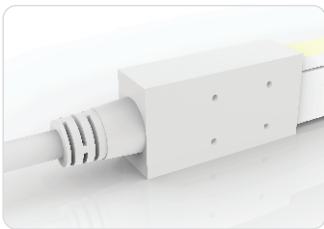
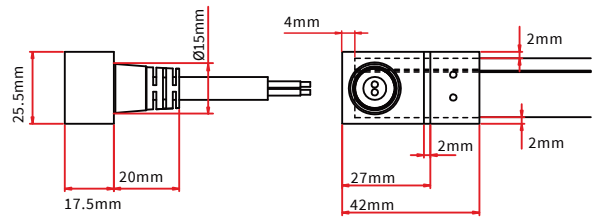
DUAL INJECTION-MOULDED FRONT CONNECTOR (BOTTOM)

Connects light to power supply with pre-installed bottom feed cable, IP68. Cable length available in 0.3m, 1m, 3m, 5m, 10m, 15m, 20m.



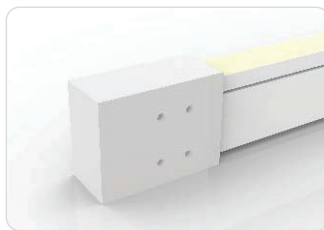
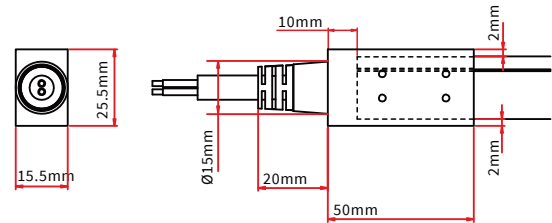
DUAL INJECTION-MOULDED FRONT CONNECTOR (SIDE)

Connects light to power supply with pre-installed side feed cable, IP68. Cable length available in 0.3m, 1m, 3m, 5m, 10m, 15m, 20m.



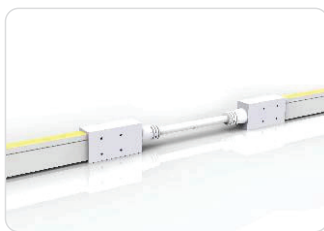
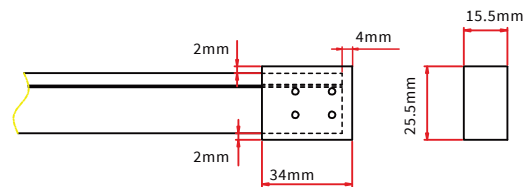
DUAL INJECTION-MOULDED FRONT CONNECTOR (TOP END)

Connects light to power supply with pre-installed end feed cable, IP68. Cable length available in 0.3m, 1m, 3m, 5m, 10m, 15m, 20m.



DUAL INJECTION-MOULDED END CAP

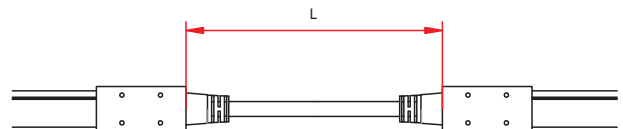
Pre-installed termination protection of the light, IP68.



DUAL INJECTION-MOULDED JUMPER

Connects two pieces of lights together with a flexible cable. IP68 Dual Injection-moulded connector. L available in 0.3-1m.

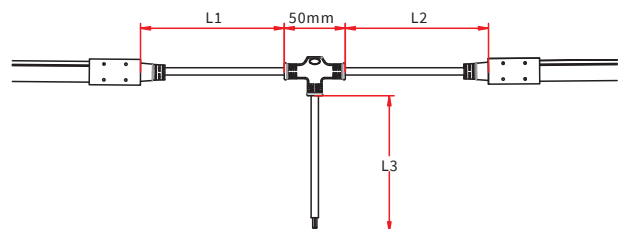
Maximum 8 Jumpers in 20m
 Maximum 4 Jumpers in 10m



DUAL INJECTION-MOULDED T-FEED

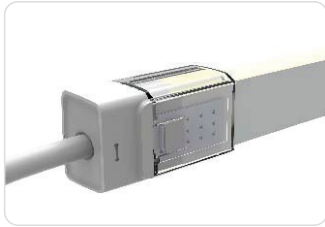
Connects two pieces of lights together with a T joint, energized from middle. IP68 Dual Injection-moulded connector. L1 and L2 available in 0.15-0.5m. L3 available in 0.3-3m.

Maximum 8 T-feeds in 20m
 Maximum 4 T-feeds in 10m



Note:
 1. Unless otherwise stated, the tolerance of the connector is $\pm 0.5\text{mm}$.
 2. Continuous length up to 7m by powering one end.

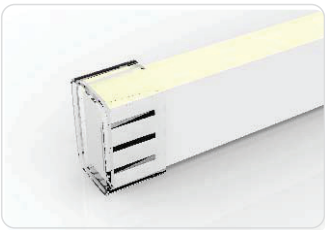
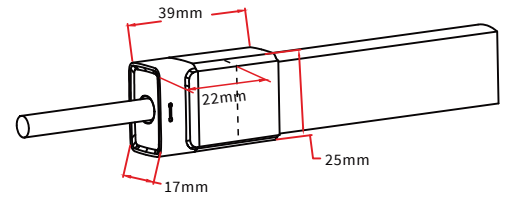
SLEEVE CONNECTOR



SLEEVE FRONT CONNECTOR

Connects light to power supply, IP40 DIY connector. Cable length available in 0.3m, 1m, 3m, 5m, 10m, 15m, 20m.

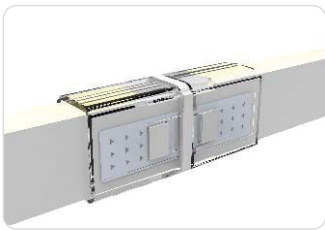
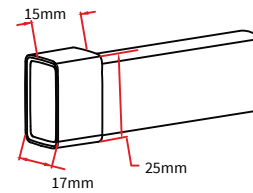
Feed connector *1 (Four-pin)
 PCCover *1
 Anti-skidding clip *2



SLEEVE END CAP

Termination protection of the light.
 IP 40 DIY connector.

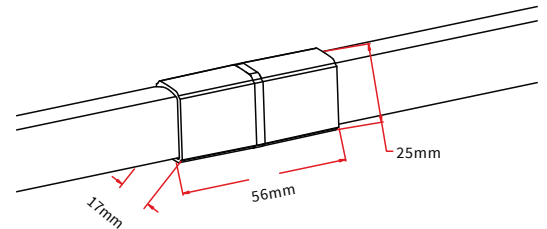
Shading Sheet*1
 PCCover *1



SLEEVE MIDDLE CONNECTOR

Combine two pieces of lights together. DIY connector

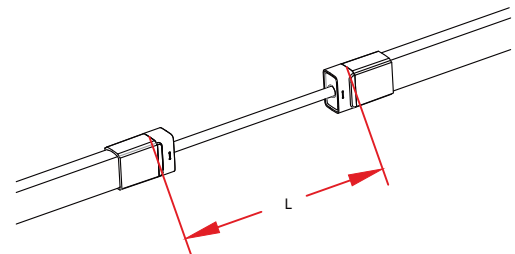
Pin connector *1 (Four-pin)
 PCCover *2
 Anti-skidding clip *4



SLEEVE JUMPER

Connects two pieces of lights together with a flexible cable. IP40 DIY connector. L available in 0.3m, 1m and 3m.

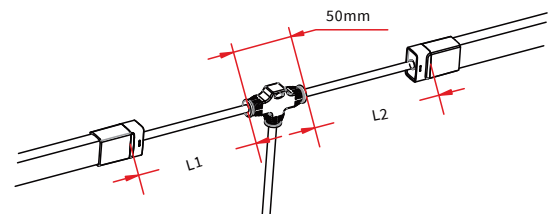
Double-end feed connector*1 (Four-pin)
 PC cover*2
 Anti-skidding clip*4



SLEEVE POWER T-FEED

Connects two pieces of lights together with a T joint, energized from middle. IP 40 DIY connector. L1 and L2 available in 0.3m.

T joint*1 (Four-pin)
 PC cover*2
 Anti-skidding clip*4



Note:
 1. Unless otherwise stated, the tolerance of the connector is $\pm 0.5\text{mm}$.
 2. Continuous length up to 7m by powering one end.

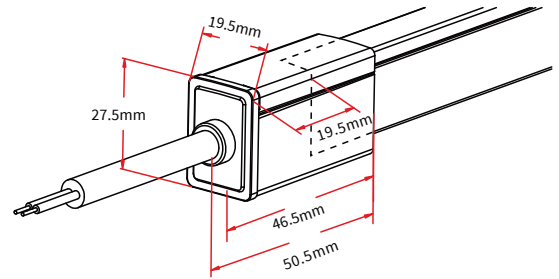
SNAP CONNECTOR



SNAP FRONT CONNECTOR(TOP END)

Connects light to power supply, IP67 DIY connector. Cable available in 0.3m, 1m, 3m, 5m, 10m, 15m, 20m lengths.

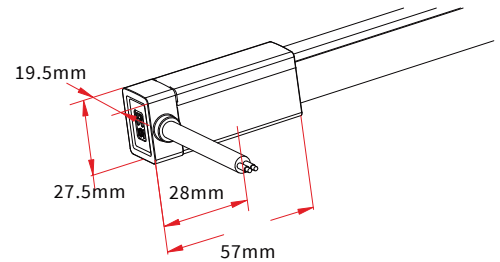
- Feed connector *1 (Four-pin)
- Silicon gasket*1
- Anti-skidding clip *1
- U steel plate *1
- PCCover *1



SNAP FRONT CONNECTOR(SIDE RIGHT/LEFT)

Connects light to power supply, IP67 DIY connector. Cable available in 0.3m, 1m, 3m, 5m, 10m, 15m, 20m lengths.

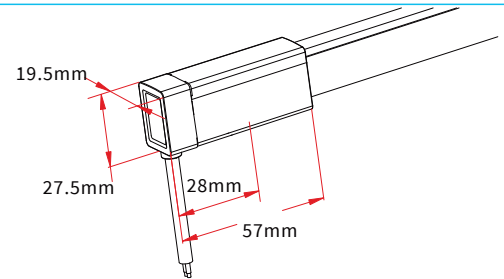
- Feed connector *1 (Four-pin)
- Silicone gasket *1
- Anti-skidding clip *1
- U steel plate *1
- PCCover *1



SNAP FRONT CONNECTOR(BOTTOM)

Connects light to power supply, IP67 DIY connector. Cable available in 0.3m, 1m, 3m, 5m, 10m, 15m, 20m lengths.

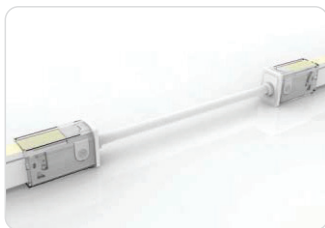
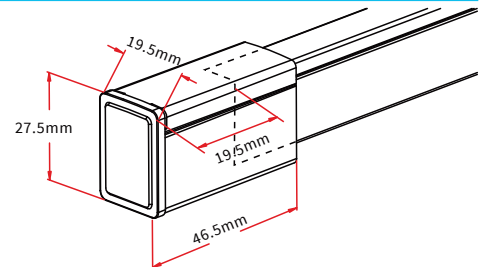
- Feed connector *1 (Four-pin)
- Silicone gasket *1
- Anti-skidding clip *1
- U steel plate *1
- PCCover *1



SNAP END CAP

Termination protection of the light, IP67 DIY connector.

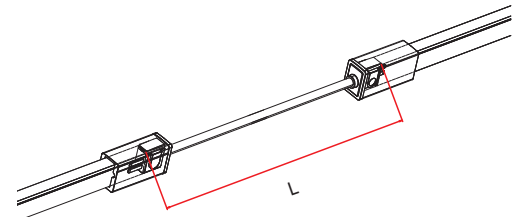
- Tail plug *1
- Silicone gasket *1
- Anti-skidding clip *1
- U steel plate *1
- PCCover *1



SNAP JUMPER

Connects two pieces of lights together with a flexible cable. IP67 DIY connector. L available in 0.3m, 1m and 3m.

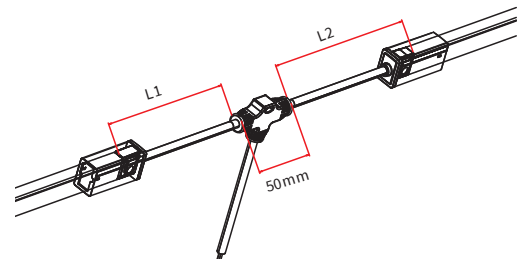
- Double-end feed connector*1 (Four-pin)
- Silicone gasket*2
- U steel plate*2
- Anti-skidding clip*2
- PC cover*2



SNAP POWER T-FEED

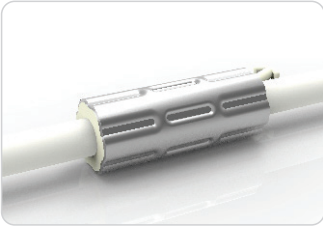
Connects two pieces of lights together with a T joint, energized from middle. IP67 DIY connector. L1 and L2 available in 0.3m.

- T joint*1 (Four-pin)
- Silicone gasket*2
- U steel plate*2
- Anti-skidding clip*2
- PC cover*2



ANTI-WICKING FERRULE

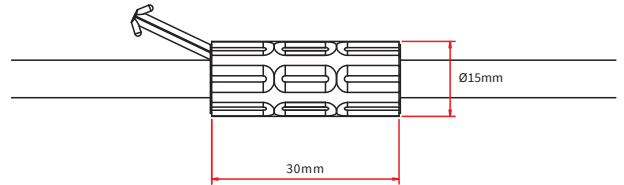
Note: Unless otherwise stated, the tolerance is $\pm 0.5\text{mm}$.



ANTI-WICKING FERRULE

The anti-wicking ferrule is located at 115mm ($\pm 5\text{mm}$ tolerance) from the connector on the cable.

For protection against water ingress from inside of cable wire and hence damage the light.



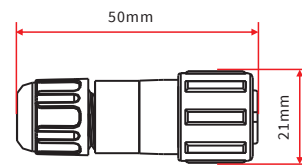
MALE & FEMALE CONNECTOR

Note: Unless otherwise stated, the tolerance is $\pm 2\text{mm}$.



MALE & FEMALE CONNECTOR

For plug and play cable junction, DIY or Pre-installed connector, IP68

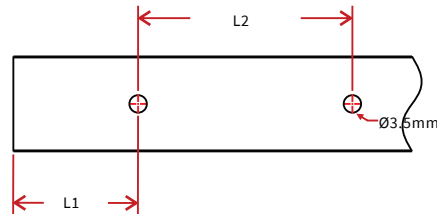
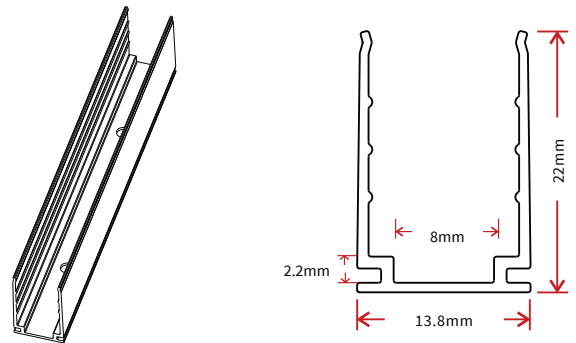


MOUNTING PROFILE

STANDARD ALUMINUM PROFILE



Note: Unless otherwise stated, the tolerance of the profile is

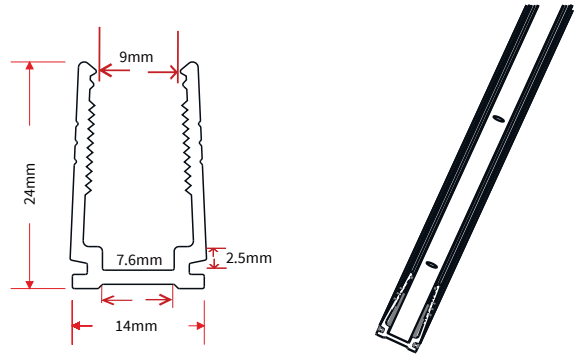
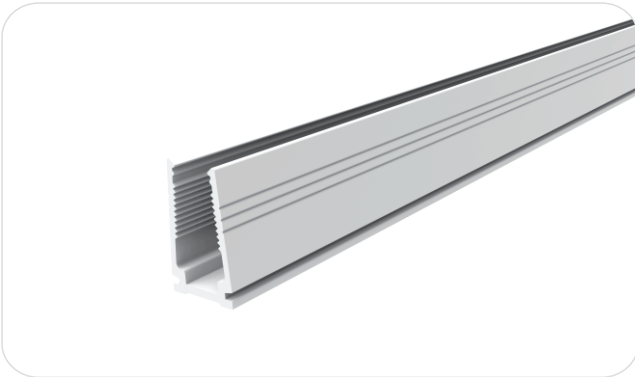


INSTALLATION WAY



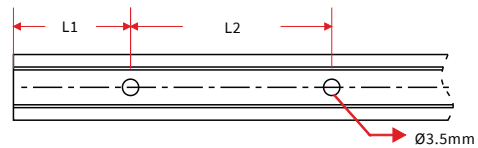
Model	W*H(mm)	Standard Length (mm)	L1(mm)	L2(mm)	Screw Hole(mm)	Hole Number
F15-A/PL	13.8*22	35	17.5	/	Ø3.5	1
		500	50	200	Ø3.5	3
		1000	100	200	Ø3.5	5
		2000	100	200	Ø3.5	10

PLASTIC PROFILE



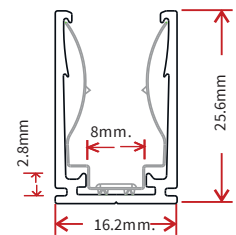
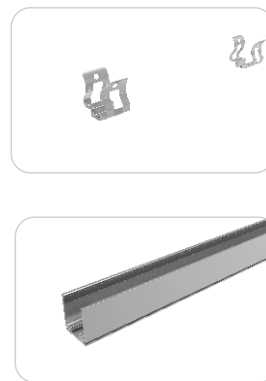
Note: Unless otherwise stated, the tolerance of the profile is

INSTALLATION WAY



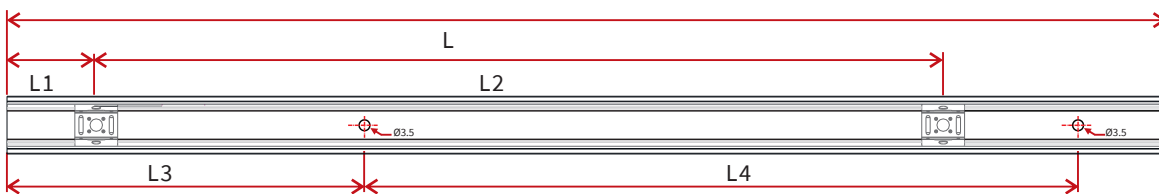
Model	W*H(mm)	Standard Length (mm)	L1(mm)	L2(mm)	Screw Hole(mm)	Hole Number
F15-P/PL	14*24	500	50	200	Ø3.5	3
		1000	100	200	Ø3.5	5
		2000	100	200	Ø3.5	10

SPRING CLIP AL UMINUM PROFILE



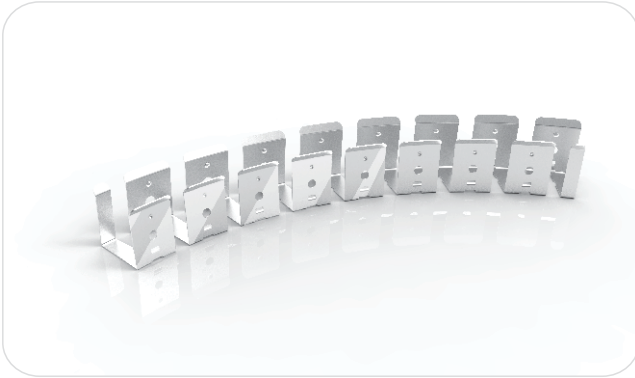
Note: Unless otherwise stated, the tolerance of the profile is ±0.5mm.

INSTALLATION WAY



Model	W*H(mm)	Standard Length(mm)	L1(mm)	L2(mm)	L3(mm)	L4(mm)	Hole Screw(mm)	Hole Number	Clip Number
F15-SCA/PL	16.2*25.6	35	17.5	/	5	25	Ø3.5	2	1
		500	25	225	50	200	Ø3.5	3	3
		1000	25	237.5	100	200	Ø3.5	5	5
		2000	25	243.8	100	200	Ø3.5	10	9

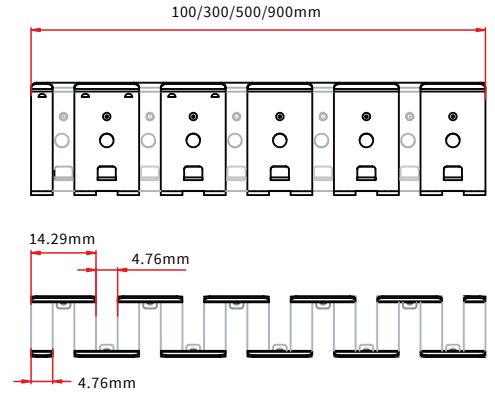
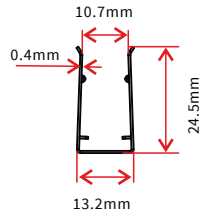
CURVE STAINLESS STEEL PROFILE



Model: F15-CS/PL

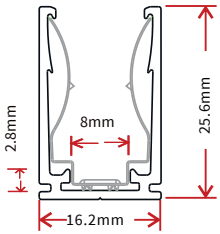
Note: Unless otherwise stated, the tolerance of the profile is $\pm 0.5\text{mm}$

INSTALLATION WAY

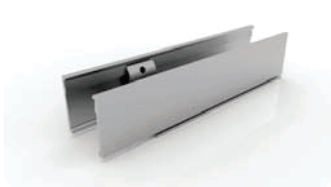


CABLE EXIT ORIENTED ALUMINUM PROFILE

(APPLICABLE TO INJECTION-MOULDED CONNECTOR ONLY)



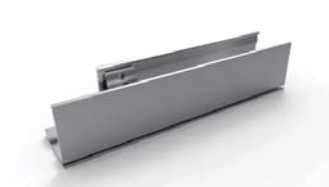
Note: Unless otherwise stated, the tolerance of the profile is $\pm 0.5\text{mm}$



Bottom Feed



Middle Feed



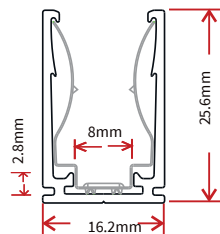
Side Feed From Left



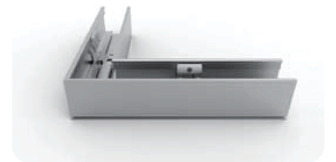
Side Feed From Right

CORNER ALUMINUM PROFILE

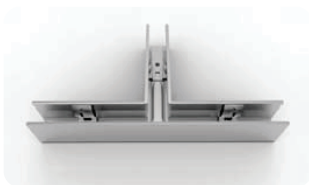
(APPLICABLE TO INJECTION-MOULDED CONNECTOR ONLY)



Note: Unless otherwise stated, the tolerance of the profile is $\pm 0.5\text{mm}$



L Shape



T Shape



Outward L Shape



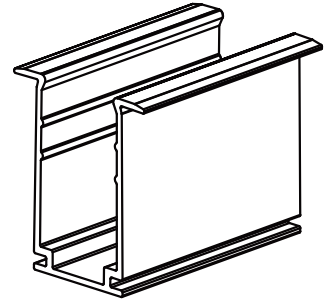
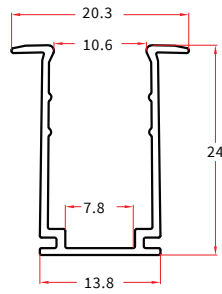
Inward L Shape



X Shape

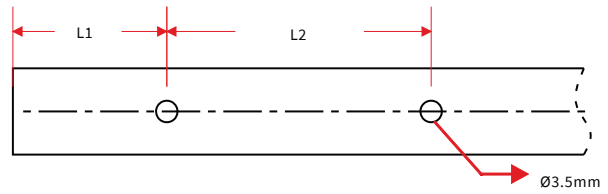
Note: Please contact our sales team for more detailed information

RECESSED MOUNTING PROFILE



Note: Unless otherwise stated, the tolerance of the profile is $\pm 0.5\text{mm}$

INSTALLATION WAY



Model	W*H(mm)	Standard Length(mm)	L1(mm)	L2(mm)	Screw Hole (mm)	Hole Number
F15-RMA/PL	20.3*24	35	5	25	Ø3.5	2
		500	50	200	Ø3.5	3
		1000	100	200	Ø3.5	5
		2000	100	200	Ø3.5	10