

LINEAR FLEX WASHER - LFW-H SERIES

LFW-H



YYZ LFW -H wall washer performs to give the ideal solution in achieving a flawless wall washing effect. Streamlined design with highly focussed and direction beam from a PMMA lens with silicone encapsulation. Backed with high quality aluminium profile for thermal management and adjustable brackets for effective installation.

Modular system available in standard lengths and can be customized as per project requirements. IP67 structural waterproof making it desirable for a wide range of applications like wall grazing, linear and indirect illumination for exterior architectural, retail and hospitality applications.



FEATURES

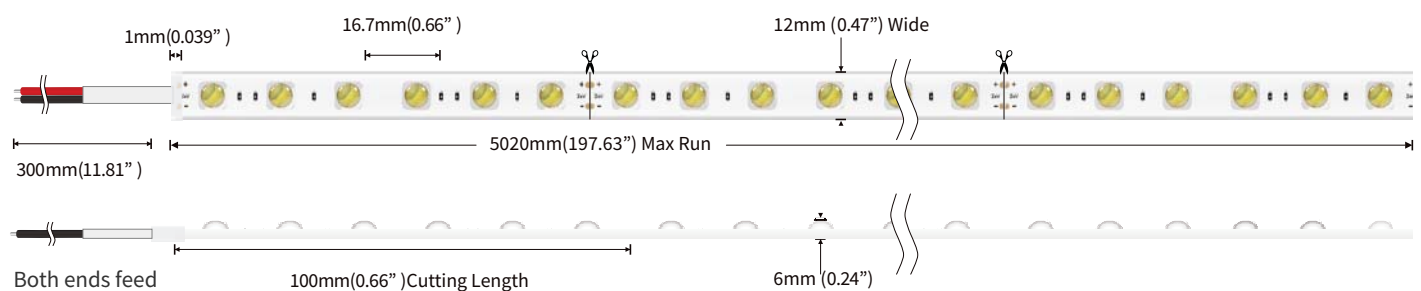
LED TYPE	5050
LED QUANTITY	60 LEDs/m
BEAM ANGLE	30°, 60°
AVAILABLE LENGTH	5000mm
MOUNTING	Surface mounted
OPERATION TEMP	-25° C - +50° C
LAMP LIFE	50000 hrs
CUTTING INCREMENTS	100mm



ELECTRICAL DATA

POWER CONSUMPTION	14W/m,
LED VOLTAGE	24V DC
COLORS	2700K, 3000K, 4000K, 5000K
CRI	90
LUMEN	60 lm/W

DIMENSION



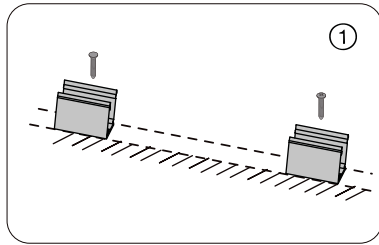
ORDERING LOGIC

PRODUCT	WATTAGE	OPTIC	COLOR TEMPERATURE	VOLTAGE	CUSTOM	
LFW-H	14 - 14W	30 - 30°	(CT27)	2700K	24 - 24VDC	XX
			(CT30)	3000K		
		60 - 60°	(CT40)	4000K		
			(CT50)	5000K		
		(CTXX)	CUSTOM			

Sample: LFW-H - 14 - 30 - CT 27 - 24 - XX

LFW-H

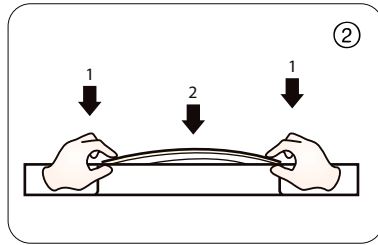
INSTALLATION



1. Installation of clip

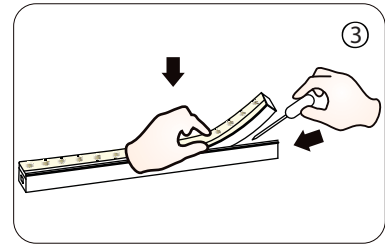
Fix the clips and aluminum profile via the screws

⚠ Suggestion: 2pcs clips per meter.



2. Installation

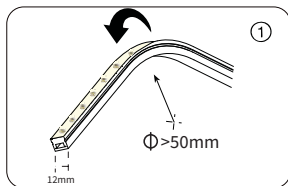
Simultaneously install the neon from both ends



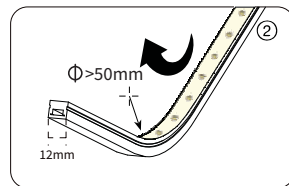
3. Installation

Should use tools to assist when remove

ATTENTION



1. Top bending Series
Corrcet bending way



2. Top bending Series
Corrcet bending way

PROFILE

