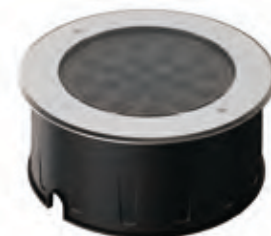


TORUS

TRS-260-RGB



YYZ Torus LED inground light for outdoor lighting applications. Transparent and Frosted covers / diffusers with buried mounting sleeves and accessories help to form uniform lighting. These inground LED lighting fixtures will create a beautiful ambiance and enhance the environment. The fixtures are versatile which can add a visual impact and also plays a critical role in safety apart from lighting.



FEATURES

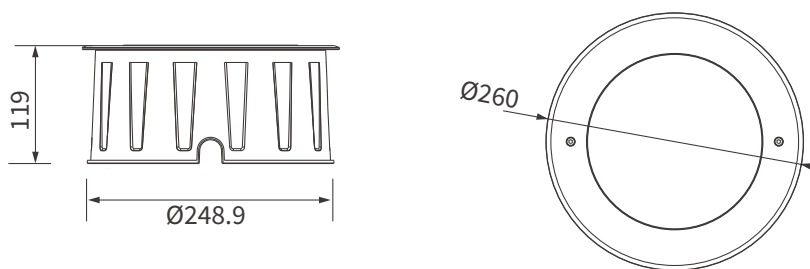
MATERIAL	STAINLESS STEEL
WORKING VOLTAGE	24V DC
RATED POWER	30/36W
BEAM ANGLE	7°/15°/30°/45°/60°/15°x60°
LAMP LIFE	50,000 HRS
MOUNTING	FLOOR RECESSED
DIMENSIONS	Ø260x119mm
OPERATION TEMP	-20° C - +50° C
BODY COLOR	STAINLESS STEEL

- CREE LED Quality
- 24V DC Working Voltage
- 30/36W Rated power

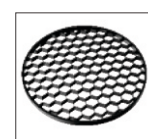
ELECTRICAL DATA

POWER CONSUMPTION	30/36W
SUPPLY VOLTAGE	24V DC
COLORS	RGB
CONTROL	DMX512
CRI	80+
LUMEN	22-25lm /W

DIMENSION



Bullseyes Louver



Honeycomb Louver

ORDERING LOGIC

PRODUCT	WATTAGE	COLOR TEMPERATURE	VOLTAGE	BEAM ANGLE	FINISH	ACCESSORIES	CUSTOM
TRS 260	30 - 30W 36 - 36W	(RGB) RGB	24 - 24V DC	7 - 7° 15 - 15° 30 - 30° 45 - 45° 60 - 60° 15x60 - 15°x60°	SS - Stainless Steel	HCL - Honeycomb Louver BL - Bullseyes Louver	XX - XX

Sample: TRS 260 - 30 - RGB - 24 - 7 - SS - HCL - XX