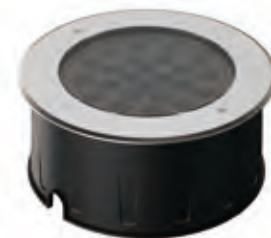


# TORUS

## TRS-260-Mono

**Mono** IP67 CE

YYZ Torus LED inground light for outdoor lighting applications. Transparent and Frosted covers / diffusers with buried mounting sleeves and accessories help to form uniform lighting. These inground LED lighting fixtures will create a beautiful ambiance and enhance the environment. The fixtures are versatile which can add a visual impact and also plays a critical role in safety apart from lighting.



### FEATURES

MATERIAL	STAINLESS STEEL
WORKING VOLTAGE	24V DC
RATED POWER	30/36W
BEAM ANGLE	7°/15°/30°/45°/60°/15°x60°
LAMP LIFE	50,000 HRS
MOUNTING	FLOOR RECESSED
DIMENSIONS	Ø260x119mm
OPERATION TEMP	-20° C - +50° C
BODY COLOR	STAINLESS STEEL

CREE LED Quality

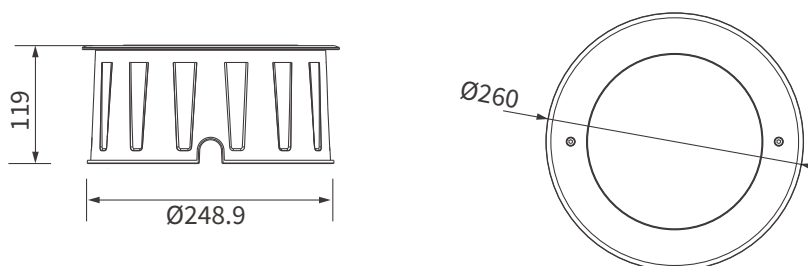
24V DC Working Voltage

30/36W Rated power

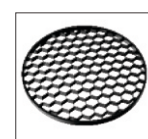
### ELECTRICAL DATA

POWER CONSUMPTION	30/36W
SUPPLY VOLTAGE	24V DC
COLORS	2700K, 3000K, 4000K, 5000K, 6000K
CONTROL	DMX512
CRI	80+
LUMEN	47-50lm /W

### DIMENSION



Bullseyes Louver



Honeycomb Louver

### ORDERING LOGIC

PRODUCT	WATTAGE	COLOR TEMPERATURE	VOLTAGE	BEAM ANGLE	FINISH	ACCESSORIES	CUSTOM
TRS 260	30 - 30W	(CT27)	24 - 24V DC	7°	SS - Stainless Steel	HCL - Honeycomb Louver	XX - XX
		(CT30)		15°			
	(CT40)	30°					
	(CT50)	45°					
	(CT60)	60°					
		15x60 - 15°x60°					

Sample: TRS 260 - 30 - CT27 - 24 - 7 - SS - HCL - XX