

# PIXEL DOT 2.4 SERIES

## PXLD 2.4 Mono



The Pixel Dot 2.4 is a low power LED string product designed for outdoor façade & landscape lighting. It adopts engineering grade flame-retardant plastic PC shell, which is sealed and waterproof by high thermal conductivity and weather-resistant PU glue; the lamp point is small in size and exquisite in appearance; the light string is connected by the high standard flexible cable, which can be bent and deformed at will, and supports the installation of special-shaped facade; The product spacing and color can be customized; it is suitable for large-area display or lighting of building facades, bridges and skylights.

### FEATURES

CONTROL GEAR	Remote
OPTIC	Clear/ Diffuser
INPUT VOLTAGE	24V DC
POWER CONSUMPTION	2.4W/Node
MOUNTING	Surface mounted
LUMINOUS FLUX	90lm /W, 216 lms @ 5000K White
BRAND OF LEDS	Epistar
BEAM ANGLE	120°
CONTROL	DMX
MATERIAL	Aluminium
FINISHING (COLOR HOUSING)	Black, White, Grey
LED LIFETIME	50,000hrs L70, B10
DIMENSION	Ø40x29.8mm
OPERATIONG TEMP	-10C ~ 50°C

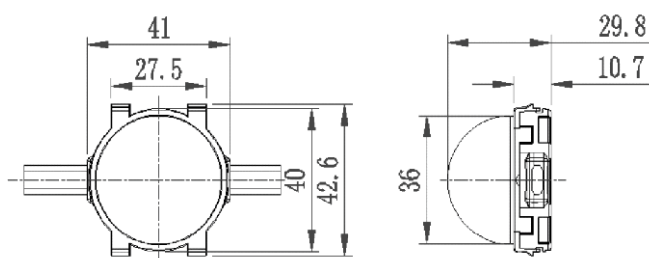


- EPISTAR LED Quality
- 24V DC Working Voltage
- 2.4W/Node Rated power

### ELECTRICAL DATA

POWER CONSUMPTION	2.4W/Node
SUPPLY VOLTAGE	24V DC
CRI	90
COLORS	3000/4000/5000/Red/Green/Blue

### DRAWING



### ORDERING LOGIC

PRODUCT	WATTAGE	COLOR TEMPERATURE	CONTROL	INPUT VOLTAGE	OPTIC	FINISH	ACCESSORIES
PXLD 2.4	2.4 - 2.4W	(CT 30) - 3000K (CT 40) - 4000K (CT 50) - 5000K (RE) - Red (GR) - Green (BL) - Blue	DX - DMX	24 - 24VDC	120 - 120°	BK - Black WH - White GR - Grey XX - Custom	OP - Opal CD - Clear Diffuser (Transparent flat shell) CDT - Clear Diffuser (Translucent bulb)

Sample:PXLD 2.4 - 2.4 - CT30 - DX - 24 - 120 - BK - OP