

# PIXEL DOT 1.5 SERIES

## PXLD 1.5 Mono



The Pixel Dot 1.5 is a low power LED string product designed for outdoor façade & landscape lighting. It adopts engineering grade flame-retardant plastic PC shell, which is sealed and waterproof by high thermal conductivity and weather-resistant PU glue; the lamp point is small in size and exquisite in appearance; the light string is connected by the high standard flexible cable, which can be bent and deformed at will, and supports the installation of special-shaped facade; The product spacing and color can be customized; it is suitable for large-area display or lighting of building facades, bridges and skylights.

### FEATURES

|                           |                               |
|---------------------------|-------------------------------|
| CONTROL GEAR              | Remote                        |
| OPTIC                     | Clear/ Diffuser               |
| INPUT VOLTAGE             | 24V DC                        |
| POWER CONSUMPTION         | 1.5W/Node                     |
| MOUNTING                  | Surface mounted               |
| LUMINOUS FLUX             | 90lm /W, 135lms @ 5000K White |
| BRAND OF LEDS             | Epistar                       |
| BEAM ANGLE                | 120°                          |
| CONTROL                   | DMX                           |
| MATERIAL                  | Aluminium                     |
| FINISHING (COLOR HOUSING) | Black, White, Grey            |
| LED LIFETIME              | 50,000hrs L70, B10            |
| DIMENSION                 | Ø40x29.8mm                    |
| OPERATIONG TEMP           | -10C ~ 50°C                   |

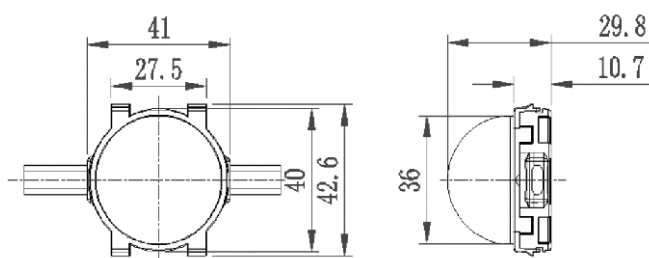


- EPISTAR LED Quality
- 24V DC Working Voltage
- 1.5W/Node Rated power

### ELECTRICAL DATA

|                   |                               |
|-------------------|-------------------------------|
| POWER CONSUMPTION | 1.5W/Node                     |
| SUPPLY VOLTAGE    | 24V DC                        |
| CRI               | 90                            |
| COLORS            | 3000/4000/5000/Red/Green/Blue |

### DRAWING



### ORDERING LOGIC

| PRODUCT  | WATTAGE    | COLOR TEMPERATURE  | CONTROL  | INPUT VOLTAGE | OPTIC      | FINISH   | ACCESSORIES  |
|----------|------------|--|----------|---------------|------------|--|--|
| PXLD 1.5 | 1.5 - 1.5W | (CT 30) - 3000K<br>(CT 40) - 4000K<br>(CT 50) - 5000K<br>(RE) - Red<br>(GR) - Green<br>(BL) - Blue | DX - DMX | 24 - 24VDC    | 120 - 120° | BK - Black<br>WH - White<br>GR - Grey<br>XX - Custom | OP - Opal<br>CD - Clear Diffuser<br>(Transparent flat shell)<br>CDT - Clear Diffuser<br>(Translucent bulb) |

Sample:PXLD 1.5 - 1.5 - CT30 - DX - 24 - 120 - BK - OP