

# ZIRCON FLOOR TILE

## ZCN 36.500

IP68

YYZ ZIRCON floor tiles emit a subtle soft glow with a choice to change colors automatically through a controller compatible with DMX512 protocol. Combination of visual effects such as breathing, jumping makes the landscape design a feast for the eyes. Frequent applications include public areas landscape lighting, shopping malls, squares, plazas, driveways, walkways, patios, resorts, etc.

Suitable for walkover / pneumatic tyre load of max. 500Kg.

### FEATURES

BODY	316L STAINLESS STEEL ENSURING HIGH CORROSION RESISTANCE
WORKING VOLTAGE	24V DC (Remote power supply)
RATED POWER	3W
LAMP LIFE	50,000 HRS
MOUNTING	FLOOR RECESSED
CONNECTION	OUTDOOR RATED CONNECTIONS
DIMENSIONS	36x500mm
OPERATION TEMP	-25° C - +50° C
CONTROL	ON/OFF, DMX512



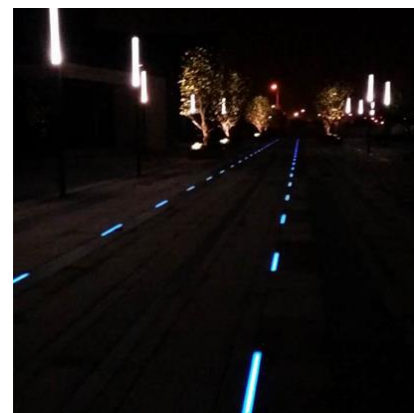
CREE/LUMILEDS  
LED Quality

24V DC  
Working Voltage

3W  
Rated power

### ELECTRICAL DATA

POWER CONSUMPTION	3W
SUPPLY VOLTAGE	24 V DC
CRI	80+
COLORS	3000K/ RGB/RGBW



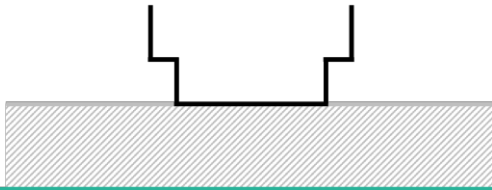
### ORDERING LOGIC

PRODUCT	WATTAGE	COLOR TEMPERATURE	CONTROL
ZCN 36.500	3 - 3W	(CT 30) 3000K (RGB) RGB (RGBW) RGBW	On/OFF DMX512

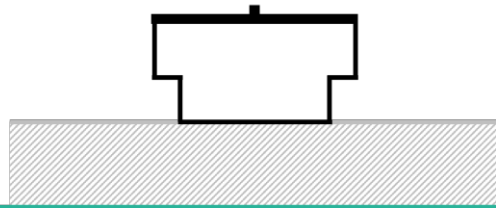
Sample: ZCN 36.500 - 3 - CT30 - ON/OFF

### GENERAL INSTALLATION INSTRUCTION

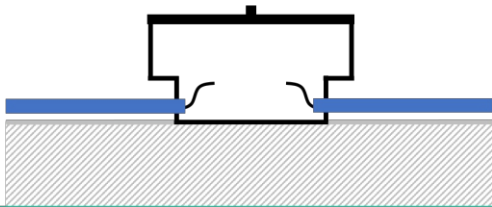
1. Position the box.



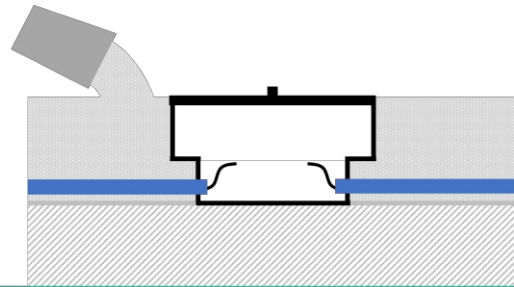
2. Cover the box with timber cover (approx. 12mm/0.5 inch.)



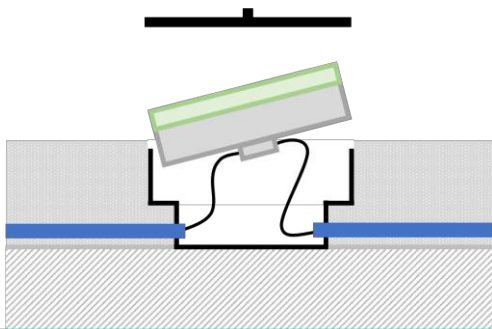
3. Feed in wires through the conduits.



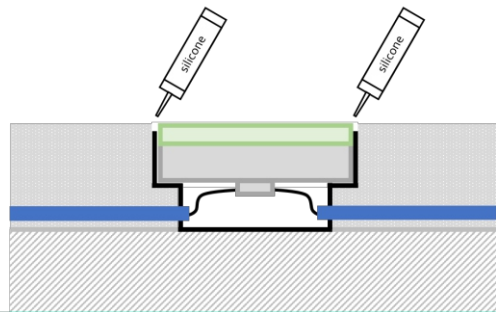
4. Pour concrete around the box.



5. Remove the cover and connect the floor tile.



6. Seal the gap with silicone.



**Please note:**

1. Timber cover or foam cover needs to be ordered separately when you place the order.
2. Adequate drainage must be provided for the base material if the floor tiles are to be located outside or at potentially wet location.
3. For wire connections please see additional instructions and/or diagrams specific to your project.