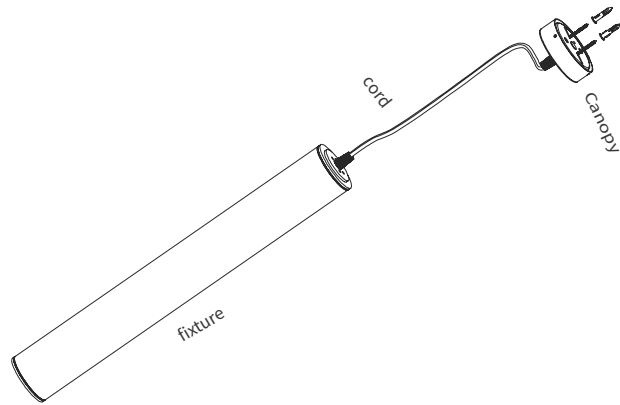


**Mono** IP20 CE

When installing or using this suspended fixture basic safety precautions should be followed .Before installation of any luminary onto an electrical junction box, be sure to disconnect power.Check that luminary voltage and building voltage are the same.

### INSTALLATION



**1** Turn off power at fuse box before proceeding

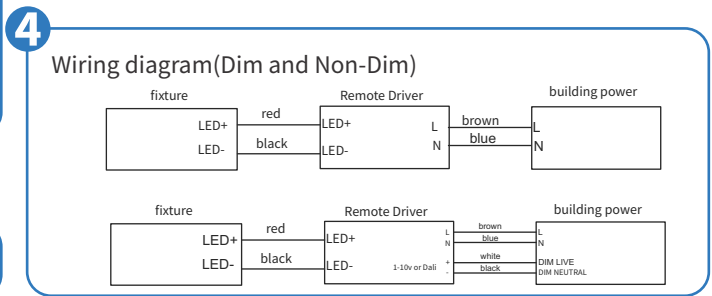
**3** Install canopy to bracket with set screw

A diagram showing the 'Canopy' being secured to a 'canopy bracket'. Two 'set screw's are shown being tightened onto the top of the canopy to clamp it against the bracket. Wires are shown extending from the bottom of the canopy.

**5** Turn on power

**2** Install canopy bracket

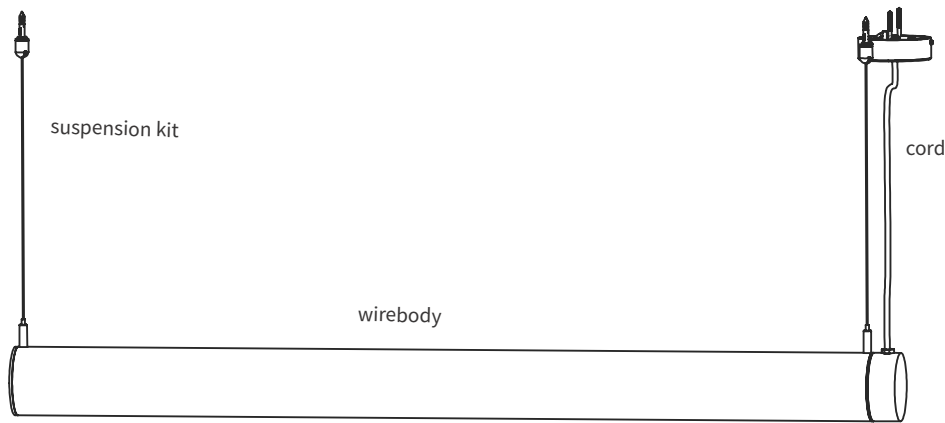
A diagram illustrating the installation of the 'canopy bracket' to a 'ceiling'. Two 'gecko screw's are shown being inserted through the ceiling into the bracket. The bracket is then secured to the ceiling with two 'wood screw's. A 'hole' is marked on the ceiling for the gecko screws.



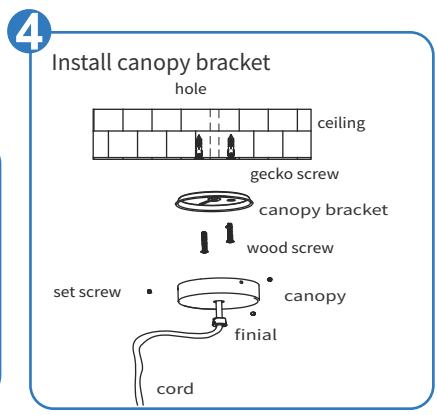
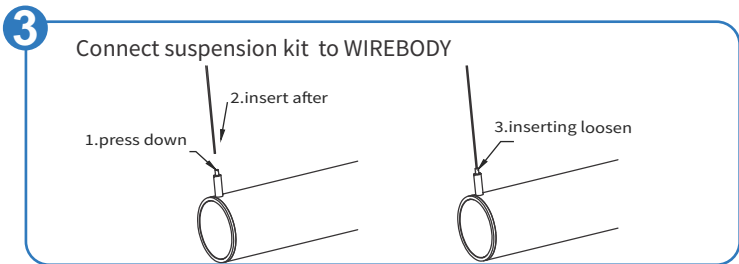
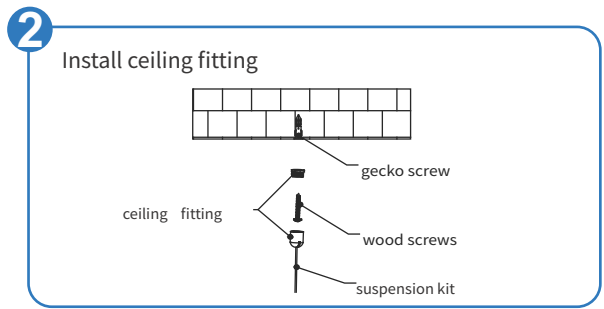
**Mono** IP20 **CE**

When installing or using this suspended fixture basic safety precautions should be followed .Before installation of any luminary onto an electrical junction box, be sure to disconnect power.Check that luminary voltage and building voltage are the same.

### INSTALLATION FOR SINGLE FIXTURE



**1** Turn off power at fuse box before proceeding



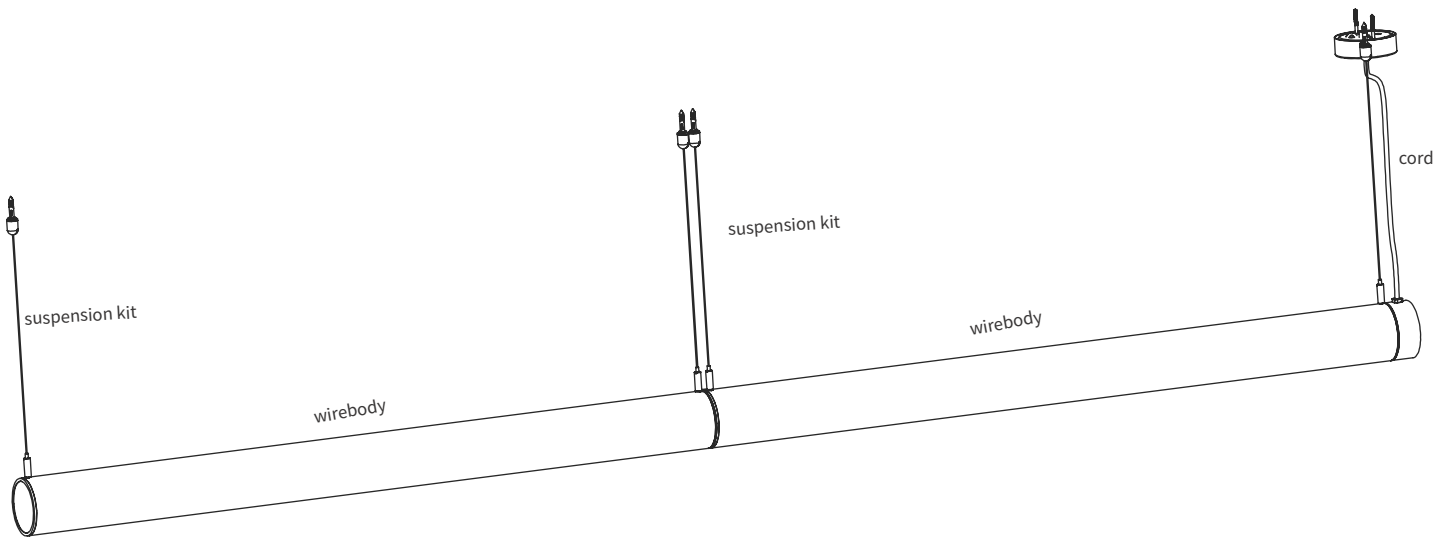
**5** Find the right wiring based on below:

<p>a. 1 circuits with dim -- 6 core                  RED - LIVE                  BLUE - NEUTRAL                  GREEN - EARTH                  WHITE - DIM LIVE                  BLACK - DIM NEUTRAL                  CLEAR - SPARE</p>	<p>b. 3 core grey, black or white                  BROWN - LIVE                  BLUE - NEUTRAL                  GREEN - EARTH</p>	<p>c. 3 core clear                  WHITE - LIVE                  BLACK - NEUTRAL                  GREEN - EARTH</p>
--	--	--

**6** Turn on power

Mono IP20 CE

### INSTALLATION FOR MULTIPLE FIXTURE



**1** If joining multiple fixtures together, loosen the cable gripper on wirebody, after connect wirebody to the other wirebody, and lock cable gripper to wirebody

connector bracket  
cable gripper  
Male/Female wire connector  
wirebody

**2** Connect electric box to wirebody

wirebody  
Male/Female wire connector  
electric box



**CAUTION: Male/Female wire connectors have a high voltage !**